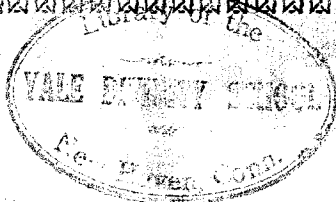


Official Minutes

# CENTRAL CHINA CONFERENCE

of the

## METHODIST EPISCOPAL CHURCH



BOARD OF FOREIGN MISSIONS  
SURVEYS & REGISTRATION  
RECEIVED

Bdx  
M45r  
III: 12

NANKING, CHINA

1920

---

---

Official Minutes of the  
Twelfth Session of the  
Central China Annual  
Conference of the Meth-  
odist Episcopal Church  
held in Nanking China  
October twenty-seventh to  
November first Nineteen  
Hundred Twenty . .

---

---

---

---

Methodist Publishing House, Shanghai

---

---



BISHOP L. J. BIRNEY

## TABLE OF CONTENTS

	PAGE
Bishop L. J. Birney .. .. .	Frontispiece
Roll and Directories .. .. .	1
Conference Organization .. .. .	5
Conference Boards .. .. .	5
Standing Committees.. .. .	6
Mission Organization .. .. .	8
Disciplinary Questions .. .. .	10
Appointments .. .. .	13
W. F. M. S. Appointments .. .. .	18
Conference Journal .. .. .	20
REPORTS :	
Chinkiang District .. .. .	42
Nanking District .. .. .	48
Kiangtangkiai Circuit .. .. .	52
Ningkwofu District.. .. .	52
Wannan District.. .. .	55
Wuhu District .. .. .	58
REPORTS OF INSTITUTIONS:	
University of Nanking .. .. .	60
Nanking Theological Seminary .. .. .	65
• Central China Conference Academy .. .. .	68
Wan Nan Academy.. .. .	72
Wuhu General Hospital.. .. .	74
Woman's Foreign Missionary Society .. .. .	78
China Centenary Movement .. .. .	81
Sunday School Committee.. .. .	83
Conference Treasurer's Report.. .. .	84
Annuity Fund Treasurer's Report .. .. .	85
Home Missionary Society Treasurer's Report .. .. .	85
Committee on State of the Church .. .. .	86
Committee on Temperance .. .. .	87
Committee on Resolutions .. .. .	88
Course of Study .. .. .	90
Historical Register .. .. .	99
Report of the Centenary Fund for 1920 .. .. .	106
Program .. .. .	107
Statistics .. .. .	109

**Secretary's Certificate**

This is to certify that this volume is a complete and correct record of the proceedings of the Twelfth session of the Central China Annual Conference and that it was adopted by the Conference as its Official Record.

*Wilbur F. Wilson.*

*Secretary.*

## ROLL AND DIRECTORIES

### CONFERENCE ROLL AND DIRECTORY

<i>Members</i>	<i>Post Office</i>
BEEBE, ROBERT C. (比必) .....	Shanghai
BLACKSTONE, JAMES H. (宋合理) .....	Nanking
BOWEN, ARTHUR J. (包文) .....	Nanking
CHANG YUNG-HSUIN (張永訓) .....	Nanking
CHEN HSI-SHEN (鄭希聖) .....	Hwangchi
CHOU KIA-YUNG (周家榮) .....	Nanking
*DIETERICH, FREDERICK W. (狄德利) .....	America
DODD, DUNCAN F. (道德根) .....	Chinkiang
HALE, LYMAN L. (海迺孟) .....	Wuhu
HARRISON, SAMUEL J. (赫麗生) .....	Nanking
HUMMEL, WILLIAM F. (恒謨) .....	Nanking
HUTCHINSON, PAUL (胡金生) .....	Shanghai
HWANG TS'AI-CHANG (黃彩章) .....	Taipingfu, An.
HWANG HSING-REN (黃興任) .....	
ILLICK, J. THERON (伊禮克) .....	Nanking
JAMES, EDWARD (簡美升) .....	Nanking
LEWIS, JOHN A. (蘆約翰) .....	Nanking
LI CH'UEN-FAN (李春蕃) .....	Chinkiang
LI KWEH-LING (李國霖) .....	France
LI YU-YUNG (李友融) .....	Wuhu
LI YUIN-SHEN (李雲陞) .....	Nanking
LIU WEI-I (劉惟一) .....	Chinkiang
LU CHI-HWAI (陸植槐) .....	Yuintsao
LONGDEN, WILBUR C. (朗登) .....	Nanking
MARTIN, ARTHUR W. (馬丁) .....	Tunki, An.
MILLER, GEORGE (密得福) .....	*America
MILLWARD, WILLIAM (莫達德) .....	*America
MORROW, EDGAR K. (馬先生) .....	*America
ROWE, HARRY F. (饒合理) .....	Nanking
STEINHEIMER, H. CARL. (沈海謨) .....	Nanking
TREMAN, ROBERT C. (徐德明) .....	Nanking
TRINDLE, JOHN R. (丁仁德) .....	Shanghai
TSOU CHI-CH'EN (鄒志成) .....	Wuhu
TUNG YUIN-SENG (董雲笙) .....	Ningkwofu
TS'U YU-HO (徐玉和) .....	Nanking
TS'U TSING-CH'EN (徐俊臣) .....	Nanking
TS'U MING-KWAN (徐明光) .....	Ningkwofu
T'U KWAN-TOU (屠光斗) .....	Hocheo
WANG YU-CH'ANG (王裕昌) .....	Wuhu

\*150 Fifth Ave., New York City.

WANG SHI-HSI (王世熙)	Siaotanyang
WILSON, WILBUR F. (韋理生)	Nanking
YANG HSIAO-CH'ING (楊筱青)	Sipu
YANG WANG-CHUNG (楊萬鐘)	Shuiyang

## PROBATIONERS

LING PING-CHEN (林炳震)	
SHEN KIA-YU (沈嘉猷)	

## LOCAL ELDER

YANG SHAN-CHIEH. (楊尙潔)	Ningkwofu
------------------------	-----------

## LOCAL DEACONS

CHUNG SHOU-CHI	Wuhu
Tsü WEI-CHUNG (徐維中)	Pu Kia-tsih
WU CHANG-PEH (吳長白)	Peh-t'u

## LOCAL PREACHERS AND EXHORTERS UNDER APPOINTMENT

CHENG HUNG-i (鄭完毅)	Molingkwan
CHENG SIU-CHI	Faculty Nanking School of Theology
CH'EN KEH-CHU (陳克鑄)	Nanking
CH'EN TEH-CHOU (陳德舟)	Chinkiang
CHU TSANG-PEI (朱昌沛)	Tanyanghsien
FANG HWAI-SAN	Faculty Nanchang Academy
FANG REN-SAN (范仁山)	Tunki
HANG CHING-KWEI (韓金奎)	Ningkwofu
HSÜ MO-TANG	Tunki
HU LIANG-PU (胡良甫)	Tunki
KWO TSUNG-TEH (郭俊德)	Chinkiang
LING CHENG-CHI (林澄之)	Tunki
NI HAI-RU (倪海如)	Tikanchen
SHEN KIA-YU (沈嘉猷)	Kianglingchen
SHEN WEI (沈畏)	Nanking
SUNG CHIEH-YING (宋介瀛)	Nanking
TAI PEN-CHING (戴鵬青)	Wuhu
TANG KWAN-YUIN (湯廣元)	Chinkiang
TSAI PU-LIANG	Tunki
TSENG TSAI-CHING	Tunki
WANG EN-HAO (王思浩)	Kaoshunhsien
WANG I-CHENG	Tunki
WU TSUN-HO (吳春和)	Lulanchiao
YU MO-REN	Tunki

## MISSION DIRECTORY

<i>Members</i>	<i>Post Office</i>
BEEBE, ROBERT C., M. D. (比必) .....	Shanghai
BEEBE, MRS. R. C. ....	Shanghai
BLACKSTONE, JAMES H. (宋合理) .....	Nanking
BLACKSTONE, MRS. J. H. ....	Nanking
BOWEN, ARTHUR J. (包文) .....	Nanking
BOWEN, MRS. A. J. ....	Nanking
BROWN, ROBERT E. M. D. (包讓) .....	Wuhu
BROWN MRS. R. E. ....	Wuhu
CHARLES, M. R., M. D. ....	Tunki
CHARLES, MRS. M. R. ....	Nanking
COOKSON, LILLIAN (柯克森) .....	Nanking
CRANE, MARIETTA .....	Wuhu
*DIETERICH, F. W. (狹德利) .....	America
*DIETERICH, MRS. F. W. ....	America
DODD, DUNCAN F. (道德根) .....	Chinkiang
DODD, MRS. D. F. ....	Chinkiang
GAUNT, FRANK P., M. D. (江德) .....	Wuhu
GAUNT, MRS. FRANK P. ....	Wuhu
HALE, LYMAN L. (海迺孟) .....	Wuhu
HALE, MRS. L. L. ....	Wuhu
HARRISON, SAMUEL J. (赫麗生) .....	Nanking
HARRISON, MRS. S. J. ....	Nanking
HUMMEL, WILLIAM F. (恒模) .....	Nanking
HUMMEL, MRS. W. F. ....	Nanking
HUTCHINSON, PAUL (胡金生) .....	Shanghai
HUTCHINSON, MRS. PAUL .....	Shanghai
ILICK, J. THERON (伊禮克) .....	Nanking
ILICK MRS. J. T. ....	Nanking
JAMES, EDWARD (簡美升) .....	Nanking
JAMES, MRS. E. ....	Nanking
KELLER, LYDIA .....	Wuhu
LEE, C. O. (李開利) .....	Wuhu
*LIBBY, W. E., M. D. (李璧) .....	America
*LIBBY, MRS. W. E. ....	America
MARTIN, ARTHUR W. (馬丁) .....	Tunki
MARTIN, MRS. A. W. ....	Tunki
*MILLWARD, WM. (莫達德) .....	America
*MILLWARD, MRS. WILLIAM .....	America
PROBASCO, ABBE (博小姐) .....	Nanking
REDMAN, SARAH .....	Wuhu
ROWE, HARRY F. (饒合理) .....	Nanking
ROWE, MRS. H. F. ....	Nanking

In America, 150 Fifth Ave. New York City.



ROYS, HARVEY C. (瑞實)	Nanking
ROYS, MRS. H. C.	Nanking
STEINHEIMER, H. CARL (海沈謨)	Nanking
STEINHEIMER, MRS. H. C.	Nanking
TREMAN, ROBERT C. (徐德明)	Nanking
TREMAN, MRS. R. C.	Nanking
TRINDLE, JOHN R. (丁仁德)	Shanghai
TRINDLE, MRS. J. R.	Shanghai
WILSON, WILBUR F. (韋理生)	Nanking
WILSON, MRS. W. F.	Nanking
WIXON, ADELAIDE M. (花嗣恩)	Nanking

### WOMAN'S FOREIGN MISSIONARY SOCIETY DIRECTORY

#### Members

#### Post Office

*C. FRANCES BATTEY	America
CARNCROSS, FLORA M. (康鳳樓)	Nanking
CRANE, EDITH M. (鶴義德)	Nanking
CHUNG MEI-LIEN (鍾美蓮)	Nanking
CROOK, W. MAY (柯小姐)	Chinkiang
FOREMAN, ELIZABETH	Nanking
FOX, EULALIA E. (法小姐)	Nanking
*FRANK, MARION F. (法仁凱)	America
GOUCHER, ELIZABETH (高智娥)	Nanking
KESLER, MARY GRACE (善梅月)	Chinkiang
LOUCKS, BLANCHE (羅克私)	Nanking
MADDOCK, LOIS (梅德凱)	Nanking
NAGLER, ETHA (羅克烈)	Nanking
NORDYKE, LELA (納德凱)	Nanking
OGBORN, KATE L. (郭凱悌)	Wuhu
PETERS, SARAH (明撒拉)	Nanking
RAHE, CORA L. (芮珂納)	Chinkiang
REEVES, CORA D.	Nanking
*RIECHERS, BERTHA L. (芮茂爾)	America
ROBBINS, E. E., M.D., (駱平士)	Chinkiang
ROBINSON, FAYE (金秉生)	Nanking
ROWE, DOROTHY (饒小姐)	Nanking
SAYLES, FLORENCE (謝樂潤)	Chinkiang
SHAW, ELLA C. (沙德納)	Nanking
SMITH, CLARA BELL (師樂凱)	Chinkiang
SMITH, JOY LOUISE	Nanking
*TAFT, GERTRUDE	America
WALKER, JENN CATHRYNE	Wuhu
*WANG, SUI (王素意)	America
WHEELER, BERNICE (胡烈雲)	Nanking
WHITE, LAURA M. (亮樂月)	Shanghai
YOUTSEY, EDITH R. (岳懿德)	Wuhu

\*In America, 150 Fifth Ave., New York City.

## CONFERENCE ORGANIZATION

### 年議會委辦之組織

#### OFFICERS

##### 職員

##### President

##### (主任)

LAURESS BIRNEY

##### English Secretary

##### 英文書記

WILBUR F. WILSON

##### Chinese Secretary

##### 中文書記

YANG HSIAO-CHING

##### Statistical Secretary

##### 數目書記

DUNCAN F. DODD

##### Asst. English Secretary

##### 英文副書記

WILLIAM F. HUMMEL

##### Asst. Chinese Secretary

##### 中文副書記

CHOU KIA-YUNG

##### Chinese Asst. Sta. Sec.

##### 數目副書記

LIU WEI-I

##### Treasurer

##### 庫吏

HARRY F. ROWE

##### Interpreters

##### 譯言員

ARTHUR J. BOWEN

HARRY F. ROWE

LI YU-YUNG

## CONFERENCE BOARDS

### 年議會各部委辦

#### Board of Mangagers of the Home Missionary Society

##### 本地佈道會執行部

**Executive Committee:**—L. L. HALE *President.*

Tsü Yü-ho *Vice-President*

SHEN KIA-YU *Secretary*

HARRY F. ROWE, *Treasurer*

CHOU KIA-YUNG *Financial Sec.*

*Stewards:*—(執事部)

TUNG YUNG-SENG, YANG SHAN-CHIEH, LI YUIN-SHEN, LI CHUEN-FAN

##### District Superintendents

##### 連環司

D. F. DODD  
A.W. MARTIN

EDWARD JAMES  
LYMAN L. HALE

TUNG YUIN-SENG  
H. C. STEINHEIMER

**Additional Conference and Lay Members**

CHOU REN-HSI LU CHI-HWAI TSU MING-KWAN CHEN SIU-CHI  
 KIANG WEN-TEH YEN TING-CHEN SHI FENG-MING  
 HU LIANG-PU SHEN KIA-YU

**Woman's Foreign Missionary Society**

女佈道會會友

EDITH M. CRANE, SARAH PETERS.

**Board of Examiners**

1919

考書部

1922

ARTHUR J. BOWEN *President and Registrar*  
 LI CHUEN-FAN CHANG YUNG-HSUIN HARRY F. ROWE  
 EDWARD JAMES TSU YU-HO CHOU KIA-YUNG TUNG YUIN-SENG

**Board of Stewards**

執事部

TUNG YUIN-SENG *President* HARRY F. KOWE, *Treasurer*  
 E. JAMES TSU YU-HO YANG HSIAO-CHING

**Triers of Appeals**

上控審判司

ROBERT C. BEEBE, CHANG YUNG-HSUIN  
 LI YUIN-SHEN HARRY F. ROWE *Chairman*  
 TUNG YUIN-SENG  
 RESERVES: WILBUR F. WILSON WANG YU-CHANG

**STANDING COMMITTEES**

常年委辦

**Conference Relations**

議執部

D. F. DODD A. J. BOWEN, *Chairman*  
 A. W. MARTIN L. L. HALE E. JAMES  
 LI CHUEN-FAN H. F. ROWE  
 TUNG YUIN-SENG LI YUIN-SHEN

**Conference Reporters**

**登報**

W. F. HUMMEL, *Chairman*

TSU YU-HO

PAUL HUTCHINSON

**Correspondents for the Christian Advocate**

**訪事員**

LIU WEI-I

CHOU KIA-YUNG, *Chairman*

L. L. HALE

TSU MING-KWAN

**Epworth League**

**務德會**

PAUL HUTCHINSON *Chairman*

LIU WEI-I

LI YU-YUNG

TSU MING-KWAN

TSU YU-HO

**Fraternal Letters**

**修函**

LU CHIH-HWAI

WILBUR F. WILSON, *Chairman*

**Nominations**

**提名**

LI CHUEN-FAN, *Chairman*

LI YU-YUNG.

ARTHUR J. BOWEN

HARRY F. ROWE

YANG HSIAO-CHING

**Programme**

**秩序**

CHOU KIA YUNG *Chairman*

TSU YU-HO

H. C. STEINHEIMER

**Resolutions**

**建議**

HWANG TSAI-CHANG

WILLIAM F. HUMMEL

LU CHI-HWAI, *Chairman*

TSU YU-HO

D. F. DODD.

TSOU CHI-CHEN

**Sunday Schools**

**主日學**

LI YU-YUNG, *Chairman*

CHEN HSI-SHEN

YANG WANG-CHUNG

ARTHUR W. MARTIN

TU KWAN-TOU

L. L. HALE

**State of the Church and Sabbath Observance****教會情形**

LI YUIN-SHEN

EDWARD JAMES

TU KWAN-TOU

A. W. MARTIN *Chairman*

L. L. HALE.

LI CHUEN-FAN

TSOU CHI-CHEN

TUNG YUIN-SENG

**Temperance****節制**

J. H. BLACKSTONE

WANG SHI-HSI

TSOU CHI-CHEN

YANG HSIAO-CHING, *Chairman*

W. F. HUMMEL

**Home Missions**L. L. HALE *Chairman*

CHOU KIA-YUNG

HARRY F. ROWE

Tsú Yü-HO

SHEN KIA-YÜ

---

**MISSION ORGANIZATION****Treasurer**

W. A. MAIN

**Finance Committee**

ROBERT C. BEEBE

WILBUR F. WILSON

LI YUIN-SHEN

F. P. GAUNT

W. A. MAIN

E. JAMES

TUNG YUIN-SENG

L. L. HALE

HARRY F. ROWE

ARTHUR J. BOWEN

J. H. BLACKSTONE

D. F. DODD

**Sanitarium Committee**D. F. DODD, *Chairman*

F. W. DIETERICH

J. T. ILLICK

EARL A. HOOSE, *Secretary*

W. F. HUMMEL

F. C. GALE

**Conference Board of Education**

<i>For University</i>	IRVING T. HU HARRY F. ROWE
<i>For Seminary and Bible Schools.</i>	ELLA C. SHAW
" " " "	SARAH PETERS
" " " "	WILBUR C. LONGDEN
" <i>Middle Schools</i>	W. F. WILSON. J. A. LEWIS TUNG YUIN-SENG. FLORA CARNCROSS. MARY G. KESLER.
" <i>Conference</i>	Tsü Yü-Ho EDITH CRANE
" <i>Hospitals</i>	DR. R. E. BROWN
" <i>Districts</i>	CHEO KIA-YUNG LI CHUEN-FANG LI YU-YUNG Tsü MING-KWAN WANG PAN-CHING
<i>At large</i>	D. F. DODD

## DISCIPLINARY QUESTIONS

---

- 1.—*Is this Annual Conference incorporated according to the Requirements of the Discipline?*  
No, the law of the land makes no provision for such incorporation.
- 2.—*Who have been received by Transfer, and from what Conferences?*  
Samuel J. Harrison, Rock River. J. Theron Illick, Kiangsi. John A. Lewis, Yenping.
- 3.—*Who have been Readmitted?*  
None.
- 4.—*Who have been Received on Credentials, and from what Churches?*  
None.
- 5.—*Who have been Received on Trial?*
  - (a) In Studies of First Year.  
Ling Ping-chen, Shen Kia-yu.
  - (b) In Studies of Third Year. Under the Seminary Rule.  
None. (Discipline, ¶ 176, § 2.)
- 6.—*Who have been Continued on Trial?*
  - (a) In Studies of the First Year.  
None.
  - (b) In Studies of the Second Year.  
None.
  - (c) In Studies of Third Year.  
None.
  - (d) In Studies of Fourth Year.  
None.
- 7.—*Who have been Discontinued?*  
None.
- 8.—*Who have been Admitted into Full Membership?*
  - (a) Elected and Ordained Deacons this year.  
None.
  - (b) Elected and Ordained Deacons previously.  
Robert C. Treman.
- 9.—*What Members are in Studies of Third Year?*
  - (a) Admitted into Full Membership this year.  
None.
  - (b) Admitted into Full Membership previously.  
None.
- 10.—*What Members are in Studies of the Fourth Year?*  
Lin Wei-i, Yang Wang-chung.

11.—*What Members have completed the Conference Course of Study?*

(a) Elected and Ordained Elders this year.

John A. Lewis, J. Theron Illick, Li Yu-yung, Tsou Chi-chen,  
Wang Shi-hsi.

(b) Elected and Ordained Elders previously.

None.

(c) Elected and Ordained Elders under the Seminary Rule. (Discipline  
¶ 179, § 3.)

None.

12.—*What others have been Elected and Ordained Deacons?*

(a) As Local Preachers. (Discipline, ¶ 176, § 1.)

Chung Sheo-chi.

(b) Under Missionary Rule. (Discipline, ¶ 176, § 4.)

None.

(c) Under Seminary Rule. (Discipline, ¶ 176, § 2.)

None.

13.—*What others have been Elected and Ordained Elders?*

(a) As Local Deacons. (Discipline, ¶ 179, § 1.)

None.

(b) Under Missionary Rule. (Discipline, ¶ 179, § 4.)

None.

14.—*Was the Character of each Preacher examined?*This was strictly done as the name of each Preacher was called in  
open conference.15.—*Who have been Transferred, and to what Conferences?*

None.

16.—*Who have Died?*

None.

17.—*Who have been Located at their own Request?*

None.

18.—*Who have been Located?*

None.

19.—*Who have Withdrawn?*

None.

20.—*Who have been permitted to Withdraw under Charges or Complaints?*

None.

21.—*Who have been Expelled?*

None.

22.—*What other personal Notation should be made?*

None.



- 23.—*Who are the Supernumerary Ministers, and for what number of years consecutively has each held this Relation?*  
Tsü Tsing-ch'en. (2) Hwang Hsing-ren (1), J. R. Trindle.
- 24.—*Who are the Retired Ministers?*  
Li Yuin-shen, W. C. Longden.
- 25.—*Who are the Triers of Appeals?*  
Robert C. Beebe, Chang Yung-hsueh, Li Yuin-shen, Harry F. Rowe, Tung Yuin-seng, Reserves:—Wilbur F. Wilson, Wang Yuchang.
- 26.—*What is the Annual Report of the Conference Board of Home Missions and Church Extension?*  
This Conference has no such Board.
- 27.—*What is the Annual Report of the Conference Board of Foreign Missions?*  
This Conference has no such Board.
- 28.—*What is the Statistical Report?*  
See the Statistician's Report.
- 29.—*What is the Conference Treasurer's Report?*  
See the Conference Treasurer's Report.
- 30.—(a) *What is the Aggregate of the Benevolent Collections ordered by the General Conference, as reported by the Conference Treasurer?*  
\$120.  
(b) *What is the Aggregate of the Benevolent Collections ordered by the Annual Conference, as reported by the Conference Treasurer?*  
\$320.
- 31.—*What are the Claims on the Conference Funds?*  
\$330.
- 32.—(a) *What has been Received on these Claims, and how has it been Applied?*  
See Report of the Treasurer of the Conference Stewards.
- 33.—*What amount has been apportioned to the Pastoral Charges within the Conference, to be raised for the Support of Conference Claimants?*  
\$50.00.
- 34.—*What amount has been paid by the Conference Treasurer to the Board of Conference Claimants for Connectional Relief?*  
\$20.00.
- 35.—*Where are the Preachers Stationed?*  
See List of Appointments.
- 36.—*Where shall the next Conference be held?*  
Nanking.

# APPOINTMENTS FOR CENTRAL CHINA CONFERENCE

NOV. 1st, 1920

## CHINKIANG DISTRICT

D. F. DODD, *Supt.*

(P. O. Chinkiang)

Chinkiang City		Li Chuen-fan
Chinkiang Circuit		Associate: Liu Wei-i and one supply Kuo Tsung-teh.
Nien yu tao		To be supplied by Tang Kwan-yuin
Kiashukan		" " "
Siaomateo		" " "
Shantang } Pehp'ao } Shiluh }	Circuit	Supplied by Chen Teh-chou
Peht'u } Tunghwei } Kaoling } Suehchen }	Circuit	Supplied by Wu Ch'ang-peh
Tanyanghsien } Maling }	Circuit	To be supplied by Chu Tsang-p'ei

## KIANGLING DISTRICT

(New. Formerly part of Nanking District:)

H. C. STEINHEIMER, *Supt.*

(P. O. Nanking)

Chinglinchen and Panchiao Circuit	Supplied by Shen Kia-yiu
Lulangch'iao and Sungchwan Circuit	Supplied Wu Tsun-ho
Siaotanyang and Powang Circuit	Wang Shi-hsi
Mohlingkwan and T'aohung Circuit	Supplied by Cheng Hung-yi

**NANKING DISTRICT**EDWARD JAMES. *Supt.* (5)

(P. O. Nanking)

**Nanking City**

Kiangtangkiai and Shangsingho	Chou Kia-yung and one supply Ch'en K'eh-chu
Shuisimen	To be supplied
Kuilan	{ Tsü Yü-ho J. H. Blackstone Robert C. Treman and one supply Ling Ping-ch'en
South Gate (West Street)	Sung Chieh-ying
West Nanking (St. Luke's)	To be supplied by Shen Wei
	(Associate Pastor)
	Dr. J. W. Walker
P'ukiatsih and Soyangwei Circuit	Supplied by Tsü Wei-chung
Hochow and Muhshaho Circuit	T'u Kwan-tou
Sip'u and Yaop'u Circuit	Yang Hsiao-ch'ing
University of Nanking	
President	Arthur J. Bowen
Superintendent of Secondary Group	W. F. Wilson
Professor of Religious Education	W. F. Hummel
Professor of Physics	H. C. Roys
Professor of Zoology	J. T. Illick
Principal of the Model School	Miss A. M. Wixon
Instructor in Model School	Miss E. V. Clemans
Union School of Theology	
Acting President	H. F. Rowe
Professor	Chang Yung-hsui
Conference Academy, Principal	John A. Lewis
Stewart Evangelistic Funds	J. H. Blackstone
Work in connection with Stewart Evangelistic Funds	W. C. Longden

**NINGKWOFU DISTRICT**TUNG YUIN-SENG, *Supt.* (7)

(P. O. Ningkwofu)

Ningkwofu City	Tsu Ming-kwan
Wannan Middle School	Tung Yuin-seng
Shunchiap'u	To be supplied
Shuiyang	Yang Wang-chung
Shwangchiao	To be supplied
Kaoshuenhsien	Supplied by Wang En-hao
Ningkwofu North	Supplied by Han Ch'in-kwei
Ningkwohsien	Supplied by Yang Shan-chieh

**WANNAN DISTRICT**A. W. MARTIN *Supt.*

(P. O. Tunki, Anhwei)

Tunki Church	A. W. Martin Pastor and one supply Hu Liang-p'u Asst. Pastor
Medical Work	Milton R. Charies
Local Preachers	*Chen Siu-chi ¶Fang Hwai-san Fang Ren-shan §Hung Hsi-wen Hsi Mo-tang Ling Chen-chi Tsai Pu-liang Tseng Tsai-ching Wang I-cheng Wang Li-yu §Wang Pan-chia Yu Mo-ren
Preaching Points	
Tunki City	
Chapel	
Hwashan (Barracks)	
Lishuyuen (Commercial School)	
Police Station	
Mission School	

Chienfu (Mission School)  
 Wangan (Normal School)  
 Yuentsz (Mission School)  
 Kaoyuen (Tea College)  
 Hweichow City (Middle School)  
 Tsengtsun (Private School)  
 Shanshan (Govt. Primary School)

\*Union Theological School Teacher, Nanking

§Student Nanking Theological School

†Teacher Nanchang Academy

## WUHU DISTRICT

LYMAN L. HALE, *Supt.* (3)

(P. O. Wuhu)

Tikanchen and Hwanghu Circuit	Supplied by Ni Hai-ru
Yuintsao } Tungchenkia } Circuit	Luh Chi-hwai
Taipingfu	Hwang Tsai-chang
Hwangch'i } Tingtu } Wuhsi } Circuit	Cheng Hsi-shen
Ichishan } Ershiiich'en } Circuit	Tsou Chi-ch'en
Wuhu Second Street } Hwakiai } Sikiangshan } Circuit	Pastor: Li Yu-yung and one Supply Tai Pen-ching
Wuhu General Hospital	
Superintendent	F. P. Gaunt
Dept. Public Health and Student of Language	R. E. Brown

## APPOINTMENTS

17

Pharmacist and Student of Lang.	C. O. Lee
Physician	Wang Yü-chang
Nurses	{ Marietta Crane Lidia Keller
Nurse and Student of Lang.	Lillian Cookson
Secretary	Miss S. Redmond

---

## SPECIAL APPOINTMENTS

Executive Secretary China Medical Missionary Association (member of St. Luke's Quarterly Con- ference)	R. C. Beebe
Executive Secretary China Centenary Movement	Paul Hutchinson
Assistant Secretary Centenary Com- mission, (New York, member South Gate Quarterly Conference)	E. K. Morrow
Missionary to Chinese in France. (Member of Kuilan Quarterly Conference)	Li Kweh-ling
Students of Language	Samuel J. Harrison Mrs. Samuel J. Harrison Miss Abbie Probasco

---

## ON FURLOUGH IN AMERICA

### California Conference U. S. A.

Pittsburg Conference U. S. A.	William Millward
California Conference U. S. A.	George Miller Frederick W. Dieterich Walter E. Libby

## WOMAN'S FOREIGN MISSIONARY SOCIETY APPOINTMENTS

November 1st. 1920

### CHINKIANG DISTRICT

Evangelistic Work and Day Schools	Clara Bell Smith
Evangelistic Work, City	Mrs. D. F. Dodd
Girls' Boarding School, Principal	Mary G. Kesler
	Cora L. Rahe (until reinforcements arrive)
	Winnie May Crook
Letitia Mason Quine Hospital	Emma E. Robbins M. D.
Superintendent of Nurses	Florence A. Sayles

### NANKING DISTRICT

City Evangelistic Work and Day Schools	Edith M. Crane
District Evangelistic Work and Day Schools	Joy L. Smith
City Evangelistic Work	Ella C. Shaw
	Sarah Peters
	Mrs. W. F. Hummel
	Mrs. J. H. Blackstone
	Mrs. E. James
	Mrs. Robert Treman
Girls' Boarding School, Principal	Flora M. Carncross
	Mei-lien Chung
	Blanche Loucks
	Dorothy Rowe
	Elizabeth Foreman
Hitt Training School, Principal	Sarah Peters
	Faye Robinson

### NINGKWOFU AND WUHU DISTRICTS

Wuhu Evangelistic Work and Assisting in District Evangelistic Work	Kate L. Ogborn
District Evangelistic Work and City and District and Day Schools	Edith R. Youtsey
City Evangelistic work after release from Chinkiang	Cora L. Rahe
Girls Boarding School Principal	Jennie C. Walker
Ichishan Evangelistic Work	R. E. Brown Mrs. L. L. Hale Mrs. F. P. Gaunt Marietta Crane Lydia Keller

### WANNAN DISTRICT

Evangelistic Work	Mrs. A. W. Martin
-------------------	-------------------

### SPECIAL APPOINTMENTS

Literary Work	Laura M. White
Conference Evangelistic Work	Yuen Yü-ying

### UNION EDUCATIONAL WORK

Ginling College	Elizabeth Goucher Cora D. Reeves
Bible Teachers' Training School, Principal	Ella C. Shaw

### LANGUAGE SCHOOL

First Year	Bernice Wheeler, Etha Nagler Lela Nordyke
Second Year	Eulalia E. Fox

### ON FURLOUGH

Marion F. Frank	
Bertha Riechers	Gertrude Taft
Sui Wang	C. Frances Battey



## CONFERENCE JOURNAL.

---

**First Day, Wednesday October 27th, 1920.**

**Opening:**—The Central China Conference of the Methodist Episcopal Church convened for its twelfth session in Kuilan Street Methodist Episcopal Church, Nanking, China, Wednesday Oct. 27th, at eight-thirty o'clock with Bishop Laress J. Birney, D. D., L. L. D. presiding.

**Communion Service:**—The Devotional exercises were led by the Bishop after which the communion of the Lord's Supper was observed. After the communion the Conference convened in business session.

**Roll call:**—At the calling of the roll the following members responded:—James H. Blackstone, Arthur J. Bowen, Chen Hsi-shen, Cheo Kia-yung, Duncan F. Dodd, Lyman L. Hale, William F. Hummel, Paul Hutchinson, Hwang Tsai-chang, Edward James, Li ch'uen-fang, Li Yu-yung, Li Yuin-shen, Liu Wei-i, Lu Chih-hwai, Wilbur C. Longden, Arthur W. Martin, Harry F. Rowe, H. Carl Steinheimer, Tsou Chich'en, Tung Yuin-seng, Tsu Yu-ho, Tsu Tsing-ch'en, Tsu Ming-kwan; Tu Kwan-tou, Wang Shi-hsi, Wilbur F. Wilson, Yang Hsiao-ch'ing, Yang Wang-chung.

The following Probationer also responded to his name: Robert C. Treman.

When the name of Robert C. Beebe was called the Bishop said that he had received a letter from Dr. Beebe, expressing regret that he was not able to be present.

When the name of Chang Yung-hsuin was called a letter written by him from Kuling was read saying that he too, regretted his inability to be present as he was still regaining his health at Kuling.

**Bar of the Conference:**—On motion of Tsu Yu-ho, the bar of the Conference was fixed at the sixth seat from the front across the hall.

**Organization of the Conference:**—The Conference then preceeded to organize and elected the following officers:—

Chinese Secretary	Yang Hsiao-ch'ing.
Assistant Chinese Secretary	Chou Kia-yung.
English Secretary	Wilbur F. Wilson.
Assistant English Secretary	William F. Hummel.
Treasurer	Harry F. Rowe.
Statistical Secretary	Duncan F. Dodd.
Chinese Statistical Secretary	Liu Wei-i.
Interpreters	Arthur J. Bowen.
	Harry F. Rowe.
	Li Yu-yung.

**Introduction:**—Dr. J. W. Walker, for nearly forty years a member of the N. W. Indiana and the Kansas Conferences, was present and introduced to and briefly addressed the Conference.

Rev. W. C. Longden, a retired member of our Conference, and who for the last ten years has been in America was present, introduced to, and briefly addressed the Conference.

Rev. John Lewis recently a member of the Yenping Conference but who during the year has been transferred to the Central China Conference was present, presented to, and briefly addressed the Conference.

Mrs. L. J. Birney, wife of our Bishop, was present and also introduced to the Conference.

**Message to Dr. Frank L. Brown:**—On motion of J. H. Blackstone in view of the fact that Dr. Frank L. Brown General Secretary of the World's Sunday School Association, was about to reach Shanghai it was voted to send to him an invitation to attend and address our Conference.

**Fourteenth Question:**—Question fourteen was taken up. Was the character of each preacher examined?

The name of Li Yuin-shen, Superintendent of the Chingkiang District was called, his character passed, and his report given. (See reports).

The name of Edward James, Superintendent of the Nanking District, was called, his character passed and his report given. (See reports).

The name of Tung Yüin-seng, Superintendent of the Ningkwofu District was called, his character passed and his report given. (See reports).

**The Conference Academy:**—As it was necessary to have a meeting of the Board of Managers of the Central China Conference Academy before the report for the Academy was presented to the Conference, and as F. W. Dieterich and W. J. Kramer had returned to America, on motion of Chou Kia-yung, John Lewis and H. Carl Steinheimer were asked to take their places on the Board of Managers.

**Nominating Committee:**—On motion of A. J. Bowen the Nominating Committee was asked to report to-morrow morning filling vacancies.

On motion of Li Ch'un fang, Li Yu Yung was asked to take the place of Chang Yung-hsueh on the nominating Committee.

After the Announcements the benediction was pronounced by Li Yün-shen and the meeting adjourned to meet at five o'clock P. M.

### Afternoon Session.

Wednesday, October 27, 1920.

The Conference was called to order at 5 P.M.

This Session is planned as a retreat for all the workers of the Conference.

After the singing of "When I survey the wondrous cross," by the congregation, and a solo by D. F. Dodd entitled "One Soul Redeemed" Bishop Birney introduced Dr. S. D. Chown General Superintendent of the Methodist Church of Canada. He took as his text: John 6:63 "The Words that I speak unto you, they are spirit and they are life".

The benediction was pronounced by A. J. Bowen and the meeting adjourned to meet at 7.30.

### Evening Session.

Wednesday, October 27, 1920.

The evening Session was called to order by E. James. Cheng Hsi-shen led in prayer. After which Rev. Paul Hutchinson gave a stereopticon lecture on The Centenary Movement in China.

After which the benediction was pronounced by E. James, and the meeting adjourned to meet tomorrow at 8.30 A. M.

**Second Day, Thursday, October 28, 1920.**

**Opening:**—The Conference convened at 8.30. After a solo by Miss Rowe the devotional exercises were led by W. C. Longden who addressed the Conference on II. Tim. 4: 1-8. At the opening of the business session prayer was offered by W. F. Wilson.

**Conference Journal:**—The English and Chinese minutes were then read and approved.

**Report of Tung Yuin-seng:**—As Tung Yuin-seng had not completed his report in regard to the Wannan Academy in yesterday's session, the Bishop called upon him to finish his report.

**Address of the Bishop:**—After the report of Tung Yuin-seng the Bishop spoke of his interest in the increasing number of students, and the need of larger quarters for them, at Ningkwofu. He was glad that at least some of this great need was going to be provided by the Centenary funds. But he emphasized the great need of our getting workers from these schools, and the responsibility of all in charge to emphasize the training of young people who will give their lives to the work of the Church.

**Introduction:**—Dr. Frank L. Brown, the General Secretary of the World's Sunday School Association being present was presented to and addressed the Conference on the work of the Sunday Schools throughout the world.

**Fourteenth Question:**—Question fourteen was resumed. The name of John R. Trindle, Superintendent of the Wannan District was called, his character passed and his report handed to the Secretary. (See reports). But as Bro. Trindle was unable to be present, the name of Arthur W. Martin was called, his character passed, and his report given.

**Address of the Bishop:**—After the report of Bro. Martin, Bishop Birney called attention to the work of the brethren who were doing this work so far away from the rest of the stations of the Conference; especially the willingness of Mr. and Mrs. Martin to take their family of children so

far into the interior. The result of such entire self forgetful sacrifice was certainly showing itself in the nature of the work done.

**Introduction:**—P. L. Gillett, of the City Y. M. C. A. being present, by invitation, was presented to and addressed the Conference.

He spoke of his experience in Korea, where he lived for twelve years, in regard to Mutual Help Associations within the Church in Korea. He thought the Church would have a greater hold on the people if in addition to the religious fellowship of the Church their spiritual experience could be carried into such organizations for mutual helpfulness.

**Fourteenth Question:**—Question fourteen was resumed. The name of L. L. Hale, Superintendent of the Wuhu District, was called, his character passed and his report given. (See reports.)

The name of D. F. Dodd, Missionary in Charge of the Chingkiang District, was called, his character passed, and his report given. (See reports).

**Report of Nominating Committee:**—The Committee for nominating members of the standing committees was called upon for its report and the chairman, Li Ch'uen fang presented the same. (See Standing Committees).

The announcements were made, after which the Bishop asked the Conference to sing "He Leadeth me." The benediction was pronounced by Yang Hsiao-ch'ing.

The Conference then adjourned to meet at 5 o'clock.

### Afternoon Session

Thursday, Oct. 28, 1920,

The Conference convened at 5 o'clock. L. L. Hale announced the hymn: "I gave my life for Thee." Pastor Suen of the Presbyterian Church led in prayer.

The Bishop then addressed the Conference members from Matthew 20: 20-22. "Are ye able to drink of the cup that I drink of". After a closing prayer by H. F. Rowe the meeting adjourned to meet at 7.30.

## Evening Session

Thursday, Oct. 28, 1920.

The Conference convened at 7.30 L.L. Hale announced the hymn "He leadeth me" and Tsu Ming-kwan led in prayer after which Paul Hutchinson again gave a stereopticon lecture showing comparative statistics in regard to membership, collections, education and medical work in the seven different Conferences in China. After the benediction was pronounced the meeting adjourned to meet at 8.30 tomorrow morning.

Third Day Friday Oct. 29th 1920.

**Opening:**—The Conference convened at 8.30. After prayer by Lu Chi-hwai Dr. J. W. Walker led the devotional exercises. H. F. Rowe then pronounced the benediction and the meeting adjourned to the Business Session. After the singing of one verse of "All Hail the Power of Jesus name" W. C. Longden led in prayer.

**Conference Journal:**—The Chinese and English minutes were read and approved.

**Wuhu General Hospital, Report:**—In the absence of Dr. F. P. Gaunt the report was given by Dr. R. E. Brown. (See reports.)

**Fifth Question:**—Question five was taken up. Who have been received on trial?

(a) In studies of the First Year.

The name of Ling Ping-ch'en was called and his character passed. As he had passed in all his examinations, on the recommendation of the District Superintendent he was received on trial and placed in the studies of the first year.

The name of Shen Kia-yu was called and his character passed. As he also had passed in all his examinations, on the recommendation of the District Superintendent he was received on trial and placed in the studies of the first year.

(b) In studies of the third year. Under Seminary rule. (Discipline Par. 176 § 2) None.

**Sixth Question:**—Question six was taken up. Who have been continued on trial?

- (a) In studies of the First Year? None.
- (b) In studies of the Second Year? None.
- (c) In studies of the Third Year? None.
- (d) In studies of the Fourth Year? None.

**Seventh Question:**—Question seven was taken up. Who have been discontinued? None.

**Ninth Question:**—Question nine was taken up. What members are in the studies of the Third Year?

- (a) Admitted into full membership this year? None
- (b) Admitted into full membership previously? None.

After this question had been answered as above Bishop Birney impressed upon the pastors the necessity of doing their best to train up young men who will be ready to do work in each year of the Conference Course of study.

**Tenth Question:**—Question ten was taken up. What members are in the studies of the fourth year? The names of Liu Wei-i and Yang Wang-chung were called and their characters passed. As they had completed the studies of the third year, on the recommendation of their District Superintendents they were advanced to the studies of the fourth year.

**Eleventh Question:**—Question eleven was taken up. What members have completed the Conference Course of study?

- (a) Elected and ordained elders this year?

The name of Tseo Chi-ch'en was called and his character passed. As he had completed the Conference Course of study on recommendation of the District Superintendent he was elected to Elders Orders.

The names of Li Yu-yung and Wang Shi-hsi were called and their characters passed. As they had finished the Conference Course of study and had met the disciplinary requirements for election to Elders Orders, on the recommendation of their District Superintendents they were elected to be ordained Elder this year.

(b) Elected and ordained elders previously? None.

(c) Elected and Ordained elders under the seminary rule (Discipline Par. 179 § 3.) None.

**Twelfth Question:**—Question twelve was taken up. What others have been elected and ordained Deacons?

(a) As Local Preachers? (Discipline Par. 176 § 1.) None.

(b) Under Missionary rule? (Discipline Par. 176 § 4.) None.

(c) Under Seminary rule—(Discipline Par. 176 § 2.) None.

**Thirteenth Question:**—Question thirteen was taken up. What others have been elected and ordained elders?

(a) As Local Deacon? (Discipline Par. 179 § 1.) None.

(b) Under Missionary rule? (Discipline Par. 179 § 4.) None.

**Fourteenth Question:**—Question fourteen was resumed.

The name of the following members were called, their characters passed, and their reports given: (See reports) Li Ch'uen-fan, Liu Wei-i Wang Shi-hsi, Chou Kia-yung, Tsu Yu-ho and Tu Kwan-tou.

When the report of Chou Kia-yung was given it was noted that from his estate the Late Governor Li Shun has bequeathed \$1111.11 for the School at Kiangtankiai. A like sum had been given to three other schools in which our Conference is interested in this city.

On motion of A. W. Martin it was voted to ask the resolutions committee to draft an appropriate resolution in regard to these gifts, the same to be sent to the family and also placed on our Conference records.

After the announcements were made the benediction was pronounced by Tung Yuin-seng and the Conference adjourned to meet at 5.00 P. M.



### **Afternoon Session**

**Friday Oct. 29th 1920.**

The Conference convened at 5 P. M.

L. L. Hale announced the hymn, "Sweet Hour of Prayer."

Prayer was offered by Tsu Yu-ho. The Bishop then addressed the workers of the Conference, on "The Danger of Emphasizing Secondary Motives."

After which prayer was offered and the benediction pronounced by W. F. Wilson, and the Conference adjourned to meet at 7.30.

### **Evening Session.**

**Friday Oct. 29th 1920.**

The session opened at 7.30. Bishop Birney opened the meeting by announcing the hymn "Stand, up, Stand up for Jesus." Prayer was offered by Li Yu-yung. Cheo Kia-yung presented the subject for consideration namely. "The Centenary Program for 1920-1921."

He stated that in a pastors meeting all the circuits had been divided into four classes as to the possibility of raising the apportionments for the year.

In the first class are seven circuits which can raise an additional \$30.

In the second class are five circuits which can raise an additional \$26.

In the third class are seven circuits which can raise an additional \$20.

In the fourth class are two which can raise an additional \$10.

The plans for increase in membership are not so definite but still every pastor is ready to do his best towards an increase of twenty five percent.

A suggestion towards forming a Band of Stewards was presented by E. James, the members to be those who give at least 3% of their income.

The need for planing for special evangeletic services on each circuit was also emphasized, and the suggestion was made that Dr. Chen Wei-ping, or some one like him, be secured for these services.

After the benediction by H. F. Rowe, the meeting adjourned to meet to-morrow morning at 8.30.

**Fourth Day Saturday Oct. 30th 1920.**

**Opening:**—The Conference convened at 8. 30.

After Prayer by Shen Wei the Conference was addressed by P. L. Gillett on the subject "Service."

After which Chou Kia-yung led in prayer and the Conference adjourned to the Business Session.

The Bishop announced the hymn "Jesus Lover of my Soul" and Chou Kia-yung led in prayer.

**Conference journal:**—The Chinese and English minutes were read and approved.

**Fourteenth Question:**—Question fourteen was resumed.

The names of the following members were called, their Characters passed, and their reports given.

Yang Hsiao-ching. A. J. Bowen, W. F. Wilson, W. F. Hummel, F. W. Dieterich, H. F. Rowe, Chang Yung-hsui, J. H. Blackstone. (See reports)

After the report of A. J. Bowen the Bishop stated that it was with the greatest pleasure that he found on coming to Nanking such a University as the University of Nanking. He said that Boston University, the University from which he had come, had direct relations with the University of Nanking through the Nanking Association of the Boston University, and that he was sure that a letter he was about to write would certainly open their eyes as to the nature of the work being done here.

After the report of Harry F. Rowe the Bishop stated that it had been his pleasure to be at the head of a Theological School in America for nine years. He was glad to see that the Nanking Theological Seminary had as its aim the sending out of students filled with the spirit of God in the same way as the school from which he had come.

He urged the members of the Conference to give themselves to prayer that we may do our share in calling men to the ministry, the greatest work ever given men to do.

**Second Question:**—Question two was taken up.

Who have been received by transfer and from what Conference?

John A. Lewis from the Yenping Conference.

J. Theron Illick from the Kiangsi Conference.

**Introduction:**—Dr. F. D. Gamewell, General Educational Secretary for China of the Methodist Episcopal Church was present, presented to, and addressed the Conference in regard to the educational needs and outlook. Dr. Joseph Clark, a member of Troy Conference, and State Secretary of the New York State Sunday School Association, Dr. R. Y. Lo of the Kiangsi Annual Conferences and now engaged in general editorial work for our Conference in Shanghai, and Rev. Samuel J. Harrison a recently arrived Missionary, a member of the Rock River Conference were presented to and briefly addressed the Conference.

**Fourteenth Question:**—Question fourteen was resumed:

The name of John A. Lewis was called and his character passed.

As he had completed his course of study and was ordained Deacon three years ago, on recommendation of Edward James he was elected to Elders Orders.

Bishop Birney stated that had he a son like John Lewis to be ordained, both he and his son would be glad to have him present and take the lead in the ordination ceremony. For that reason while Bro. Lewis was now elected to Elders Orders the ordination ceremony would not be performed until the return of Bishop Lewis from West China.

**Eighth Question:**—Question eight was taken up: Who have been admitted in full membership:

The name of R. C. Treman was called and his character passed.

In as much as R. C. Treman had completed the first two years of his Conference Course of study and had fulfilled the disciplinary requirements, on recommendation of the District Superintendent he was admitted into full membership and placed in studies of the third year.

The Bishop then called him forward and asked him the disciplinary questions for admission into full membership.

It was noted that Bro. Treman had already been ordained Deacon and Elder under the Missionary rule.

**Eleventh Question:**—Question eleven was resumed.

The name of J. T. Illick was called and his character passed.

As he had already completed his Course of study and had also been ordained Deacon, on recommendation of his District Superintendent he was elected to Elders Orders.

**Twelfth Question:**—Question twelve was resumed:

What others have been elected and ordained deacons?

On recommendation of the Conference Relation and Examining Committees, in view of work done and studies previously taken, Chung Shou-chi was elected to Local Deacon's orders.

After the announcements the benediction was pronounced by W. C. Longden and the Conference adjourned to meet at 5 o'clock.

### **Afternoon Session.**

**Saturday Oct. 30th, 1920.**

The Conference convened at 5 o'clock.

L. L. Hale announced the hymn "I gave my life for Thee." Prayer was offered by Miss K. L. Ogborn.

The Bishop then completed his address of yesterday by addressing the Conference on the subject.

"The Supreme Motive of the Christian Life."

**Fifth Day, Sunday, October 31, 1920**

The Conference convened at Love Feast at 9.30.

A. W. Martin was in charge.

A large number from the schools were present.

At 10.30. The Bishop preached the Conference sermon from 1 John 4:18. God is Love.

After which the ordination services were held when Chung Shou-chi was ordained Local Deacon and J. T. Illick, Li Yu-yung, Tseo Chi-ch'en, and Wang Shi-hsi were ordained Elders.

At 2.30 P.M. An Epworth League and Sunday School rally was held at which Miss Geraldine Townsend spoke for the Epworth League and Li Yu-yung for the Sunday School.

At 7.30 P. M. Dr. Frank Brown addressed the Conference on the subject :

"The Sunday School as a means of Leading men to Christ."

After the benediction by E. James the Conference adjourned to meet at 8.30 to-morrow morning.

**Sixth Day, Monday, November 1st. 1920**

**Opening:**—The Conference convened at 8.30. W. C. Longden led the devotional exercises and addressed the Conference on Psalm. 130:5.

After which the Conference joined in singing "How Firm a Foundation" and in repeating the Lord's Prayer.

The Conference then adjourned to meet in Business Session.

The Bishop announced the hymn "I need thee every hour" after which Li Yu-yung led in prayer. The Reading of the Minutes was deferred.

**Introduction:**—Rev. F. C. Gale of the Kiangsi Annual Conference was present and presented to the Conference.

**Fourteenth Question:**—Question fourteen was resumed:

The names of the following were called, and their characters passed:

Wang Yu-chang, Tsu Ming-kwan, Yang Wang-chung, Lu Chi-hwai, Hwang Ts'ai-chang, R. C. Beebe, Paul Hutchinson, Hwang Hsing-ren, Li Kwoh-ling, Wilbur C. Longden, George Miller, William Millward, Edgar K. Morrow, H. Carl Steinheimer, Tsu Tsing-chen, Chen Hsi-shen, Tsou Chi-chen, Li Yu-yung.

The Conference also passed the characters of the Local Preachers and Exhorters.

**Report of Paul Hutchinson:**—When the name of Paul Hutchinson was called the Bishop asked him to report as the General Secretary of the Centenary movement in China. (See report.)

**Fraternal Letters:**—On motion of Li Ch'uen-fan it was voted to ask the committee on Fraternal Letters to send the greeting of the Conference to Dr. R. C. Beebe, and Chang Yung-hsui.

**Report of the Woman's Foreign Missionary Society:**—Miss Edith Crane, representing the W. F. M. S., was present and the Bishop called upon her to give the report for the Woman's Foreign Missionary Society. (See reports.)

**Draft from Book Concern:**—The Bishop announced that he had received a draft for \$264 from the Methodist Book Concern. This after proper endorsement was handed to the Treasurer of the Conference.

**Report of General Editor Dr. R. Y. Lo:**—Dr. R. Y. Lo, the General Editor for Chinese Literature for our Conferences, being present was asked to give a report.

**Sixteenth Question:**—Question sixteen was taken up. *Who have died?* None.

**Eighteenth Question:**—Question eighteen was taken up. *Who have been located?* None.

**Nineteenth Question:**—Question nineteen was taken up. *Who have withdrawn?* None.

**Twentieth Question:**—Question twenty was taken up. *Who have been permitted to withdraw under charges or complaints?* None.

**Twenty-first Question:**—Question twenty-one was taken up. *Who have been expelled?* None.

**Twenty-second Question:**—Question twenty-two was taken up. *What other personal notation should be made?* None.

**Twenty-sixth Question:**—Question twenty-six was taken up. *What is the annual report of the Conference Board Home Missions and Church Extension?*

This Conference has no such Board.

**Twenty-seventh Question:**—Question twenty-seven was taken up. *What is the annual report of the Conference Board of Foreign Missions.*

This Conference has no such Board.

After the announcements and the Benediction by Dr. I the Conference adjourned to meet at 3.30 this afternoon.

### Afternoon Session

Monday, November 1, 1920

**Opening:**—The meeting convened at 3.30.

The Bishop announced the hymn "My Faith Looks up to Thee."

Paul Hutchinson led in prayer.

**Second Question:**—Question two was resumed. *Who have been transferred and from what Conferences?*

Bishop Birney announced that he had transferred Samuel J. Harrison from the Rock River Conference to the Central China Conference.

**Third Question:**—Question three was taken up. *Who have been readmitted?* None.

**Fourth Question:**—Question four was taken up. *Who have been received on Credentials and from what Conferences?* None.

**Twenty-third Question:**—Question twenty-three was taken up. *Who are the supernumerary ministers?*

Hwang Hsing-ren, J. R. Trindle, Tsu Tsing-chen.

**Twenty-fourth Question:**—Question twenty-four was taken up. *Who are the retired ministers?*

Li Yuin-shen, W. C. Longden.

On motion of W. F. Wilson the Conference Relations Committee was asked to prepare a suitable resolution in regard to the retirement of Li Yuin-shen, the same to be presented with the report of the Committee on resolutions. (See report).

Also a similar resolution was to be prepared expressing our regret at the temporary withdrawal of J. R. Trindle.

The Bishop then called for the singing of the hymn "Blest be the tie that Binds."

**Twenty-fifth Question:**—Question twenty-five was taken up. *Who are the triers of appeals?*

Harry F. Rowe, Robert C. Beebe, Chang Yung-hsui, Li Yuin-seng, Tung Yuin-seng.

Reserves. Wang Yu-chang, Wilbur F. Wilson.

**Thirtieth Question:**—Question thirty was taken up.

A. *What is the aggregate of the Benevolent Collections ordered by the General Conference, as reported by the Conference Treasurer?*

\$120.00 Mexican.

On motion of Li Ch'uen-fang, money which had been collected on Salary of District Superintendent was transferred to the account of General Conference expenses.

**General Conference Expenses:**—Bishop Birney stated that in Conference with the Treasurer of the General Conference he had agreed to the apportionment of \$300 to the Central China Conference for General Conference Expenses.

On motion of Chou Kia-yung it was voted that this \$300 be apportioned among the circuits at the rate of \$75.00 each year. And that the four different classes be asked to give according to their grade as follows:

1st class.....	\$5
2nd class.....	4
3rd class.....	2
4th class.....	1



B. *What is the aggregate of the Benevolent Collections ordered by the Annual Conference as reported by the Treasurer?*

\$320.00 Mexican.

**Thirty-first Question:**—Question thirty-one was taken up. *What are the claims on the Conference Fund?*

\$330.00 Mexican.

**Salary of Retired Ministers:**—On motion of H. F. Rowe it was voted that the apportionment to retired ministers at present be one-half the salary they were receiving when they retired.

**Thirty-second Question:**—Question thirty-two was taken up. *What has been received on these claims and how has it been applied?*

(See report of Treasurer of Conference Stewards.)

**Thirty-third Question:**—Question thirty-three was taken up. *What amount has been apportioned to the pastoral Charges within the Conference to be raised for the support of Conference Claimants?*

\$50.00 Mexican.

**Thirty-fourth Question:**—Question thirty-four was taken up. *What amount has been paid by the Conference Treasurer to the Board of Conference claimants for Connectional relief?*

\$20.00 Mexican.

**Thirty-fifth Question:**—Question thirty-five was taken up. *Where are the preachers stationed?*

(See List of appointments.)

**Thirty-sixth Question:**—Question thirty-six was taken up. *Where shall the next Conference be held?* Nanking.

**Reports of Standing Committees:**—On motion of A. J. Bowen it was voted that the reports of the standing Committees be handed to the secretaries but not read in Conference.

**Program of the Evening Session:**—On motion of Paul Hutchinson it was voted that the order of business of the Evening Session be,

First, Business Session

Second, Address of Dr. Lo on Church Literature. And

Third, the reading of the appointments.

The Benediction was then pronounced by Li Yu-yung and the Conference adjourned, immediately to the final session of the Retreat.

### The Final Session for Prayer

The Session opened at 5 P.M. The Bishop announced the Hymn "I am coming to the Cross." He then addressed the Conference on the subject.

"The Word Became Flesh."

After which prayer was offered by H. F. Rowe and the Conference adjourned to meet in closing Session at 7.30

### Evening Session

Monday, November 1, 1920

**Opening:**—The Conference convened at 7.40 After Singing "Oh Happy Day," the Conference was led in prayer by Li Ch'uen-fan.

**Twenty-eighth Question:**—Question twenty-eight was taken up. *What is the Statistical Report?*

The Conference Statistician D. F. Dodd then gave his report.

(See Statistician's Report.)

**Twenty-ninth Question:**—Question twenty-nine was taken up. *What is the Conference Treasurer's Report?*

(See Conference Treasurer's Report.)

**Report of Tellers:**—The Bishop called for the report of the Tellers for elections to the National Christian Conference for China to be held next Spring in Shanghai.

The tellers reported that in the meeting of foreign missionaries held in the afternoon A. J. Bowen, H. F. Rowe and Ella C. Shaw had been elected and that there was a tie vote for the second woman delegate.

W. F. Wilson was chosen as reserve.

**Second Ballot:**—On motion of H. C. Steinheimer it was voted that two names among the women members be voted for and that the one receiving the highest number of votes be the second delegate and the one receiving the next highest be the alternate.

**Report of Second Ballot:**—Kate L. Ogborn was elected and Mary G. Kesler reserve.

**Election of Chinese Delegates:**—The Bishop announced that there should also be chosen by the Conference three Chinese Delegates.

As the election of the foreign delegates had been made by the foreign members voting alone, the election of the Chinese delegates was left for the Chinese alone.

On motion of W. F. Wilson it was voted that only those men and women who are under appointment by the Conference shall be entitled to vote, and that the name of one woman be included in the vote.

The Bishop then appointed three Chinese tellers. Chen Hsi-shen, Lu Chi-hwai, Tsou Chi-chen, and the vote was taken.

**Printing of the Minutes:**—On motion of Li Ch'uen-fan it was voted that 200 Copies of the Chinese Minutes be printed.

On motion of W. F. Hummel it was voted that 200 copies of the English Minutes be printed.

**Official Minutes:**—On motion of Edward James it was voted that the English Minutes be considered the official minutes of the Conference.

**Editors of the Minutes:**—On motion of E. James it was voted that the English Secretaries together with Paul Hutchinson be the Editors of the English Minutes.

On motion of Li Ch'uen-fan it was voted that the Chinese Secretaries edit the Chinese Minutes.

**Approval of Minutes:**—On motion of H. C. Steinheimer it was voted that, as our time was very short all the minutes

not yet approved should be left to a committee consisting of the Secretaries, Edward James, and Tsu Yu-ho to correct and approve.

**Conference Board of Education:**—On motion of Li Ch'uen-fan Chairman of the Nominating Committee the following were elected to serve as the Conference Board of Education:

For Middle Schools:

Wilbur F. Wilson, John Lewis, Tung Yuin-seng, Flora M. Carncross, Mary G. Kesler.

For University:

Irving T. Hu.

For Seminary and Bible Schools.

Harry F. Rowe, Ella C. Shaw, Sarah Peters, W. C. Longden.

For the Annual Conference:

Tsu Yu-ho, Edith Crane.

For Medical Work:

Dr. R. E. Brown.

For Districts:

Chou Kia-yung, Li Ch'uen-fan, Li Yu-yung, Tsu Ming-kwan, Wang Pau-ching.

Member at Large.

D. F. Dodd.

**Report of the Treasurer of the Centenary Fund:**—

A. J. Bowen, Treasurer of the Centenary fund, then gave his report.

(See Report.)

**Report of Tellers:**—The tellers announced that the following members had been elected to the National Christian Conference.

Li Yu-yung, Tsu Ming-kwan, Miss Chung Mei-lien, Reserves. Chou Kia-yung, Miss Yuen Yu-yuin.

**Delegates to the Kiangsu Federation Conference:**—On motion of Chou Kia-yung the following were elected as delegates to the Kiangsu Federation Conference.

Edward James	Tsu Yu-ho
W. F. Hummel	Li Ch'uen fan.

**Conference Centenary Committee:**—On motion of A. J. Bowen the following were declared elected on the Conference Centenary Committee. Bishops Birney and Lewis.

(District Superintendents.) D. F. Dodd, L. L. Hale, E. James, H. C. Steinheimer, Tung Yuen-seng.

Missionaries: A. J. Bowen, P. Hutchinson, H. F. Rowe.

Chinese Pastors: Chou Kia-yung, Li Ch'uen-fan, Li Yu-yung, Tsu Ming-kwan, Tsu Yu-ho

**Address of Dr. Lo:**—Dr. Lo then addressed the Conference on The Importance of Literature as an Evangelistic Agency.

**Report of Committee on Resolutions:**—The Committee on Resolutions then gave its report.

(See Reports.)

**Address of the Bishop:**—Bishop Birney then gave his final address to the Conference.

**Appointments:**—At the request of the Bishop the appointments were read by Edward James.

After which the benediction was pronounced by Bishop Birney and the Conference adjourned sine die.

L. J. BIRNEY

*President,*

WILBUR F. WILSON.

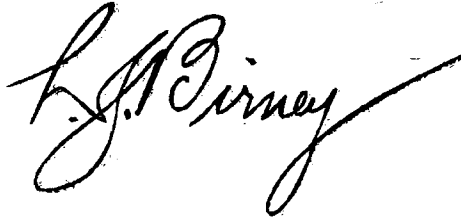
*Secretary.*

### Certificate of Ordination

---

This is to certify that on Sunday, October thirty-first, 1920, at Nanking, China, in accordance with the Liturgy and Discipline of the Methodist Episcopal Church, I ordained Chung Sheo-chi, duly elected by the Central China Conference, to the office of Deacon; and at the same time and place, assisted by Elders, I ordained J. T. Illick, Li Yu-yung, T'seo Chi-chen, and Wang Shi-hsi, also duly elected, to the office of Elder in the Methodist Episcopal Church.

(Signed)

A handwritten signature in black ink, reading "L. J. Pirney". The signature is written in a cursive style with a long, sweeping horizontal stroke at the end.

## REPORTS

### Annual Report of Chinkiang District.

LI YUIN SHENG, *Superintendent 1920*

The one foremost thought of the Chinese Christians today is found in the spirit of evangelism—a realization of the necessity of reaching the people in the remote sections where the Gospel is unknown. This thought was crystalized when six pioneer workers started for Yunnanfu one year ago last March. Being privileged to be one of the six I shall relate a little of my experience so as to give you a glimpse of my work in Yunnan.

The pioneers aimed at four distinct lines of work. First, the strengthening of the already established local churches. Second, the investigating of the province from an evangelistic viewpoint. Third, a division of the province between us three men—each was to go in a different direction alone for investigating and doing work among the Chinese and the various tribes.

Personally I made three long trips over land—one of five hundred and twenty-five li or one hundred and seventy-five miles northwest of Yunnanfu, most of the way on foot or riding in a local chair which is made of a rope suspended on poles carried by men, passing three large cities, three small towns, and numerous villages. In every place there were wonderful chances to witness for Christ. Seventeen days journey through huge forests, up steep mountains, and amid the magnificent scenes of nature where the sky was so clear overhead, there came to me a thrill rarely felt in the plains below that God could be so real and near. At last I reached Tai-Ku-Shan where I tarried for two days and I was able to reach more than six hundred people who showed much interest and enthusiasm over Christianity. It was a joy to see their simple faith exercised in such an impressive manner.

The second trip I took toward the south as far as three hundred and fifty miles along the railroad. The first station was Yee-Liang-Hsiang where meetings were held for three days which every time averaged thirty in attendance. The next

station was A-Mei-Ches. The Pentacost Mission has their work there. I assisted them for two days in special meetings. The third station was Moh-Tze-Hsiang where I spent five days. The fourth being the largest city along the line with a population of three hundred thousand without a single Christian worker: I spent twelve days there and held twenty-one meetings; every time the attendance reached up to sixty, in spite of the rain we had during those days. The last station was Bi-si where I spent Sunday. A trip of a total of twenty-six days filled with joy and encouragement. I can truly say God is good; all men must know Him.

The third trip I took to the northeast. I passed through nine China Inland Mission stations and stopped over two days at each place to hold meetings and have personal conferences. The attendance ranged from forty to two hundred. Farther on north almost within the borders of Sze-chuen province I met with a dangerous accident. My horse stumbled and threw me over so that I rolled down a steep slope as far as twenty feet, fortunately a stump of a tree stopped me from going farther down. I lay in a swoon for I don't know how long, perhaps half of an hour, before I regained my senses and with the help of the driver I managed to rise and supporting myself on him climbed up the slope to the road. After the horse was rescued from its danger, I mounted again and continued the journey more slowly while the pain from the bruises made me faint. I traveled only sixteen li that day. Being eight hundred li or two hundred and sixty miles from Yunnanfu I had to rest myself in order to take the trip home on horse back. Eight days for physical rest but not for spiritual work. Meetings were held just the same for the local church. I had hoped to return in good speed but when I was within three days from Yunnanfu the innocent horse kicked me on the right leg and made it bleed unceasingly for some time until I searched out a clean handkerchief to wrap it up. Almost unable to ride any more yet as there was no other way to reach my destination, I forced myself with unbearable pain to get on again. By the time I reached Yunnanfu at the completion of forty days trip I had contracted some illness in the rain and through weariness. With the additional injury in my leg I was confined to bed for more than fifty days which forced my return to Nanking.



After returning I spent only nine days at home and in that time three days were given to attending the Finance Committee and the rest of the time I spoke seven times on Yunnan and preached four times in the churches in Peking.

After that Conference I came south to hold China New Year evangelistic meetings in Tanyanghsien. It is an untouched field. Our work is very new there so a large number of the population is not yet reached.

I made two trips to Shanghai, in the spring—one for the Bible School and the other for the Yunnan Mission Committee.

In March I went to Chinkiang and Nienyütao. In the latter a splendid chapel is secured, God has certainly blessed us immensely.

In April I visited Pehtu and held the Quarterly Conference there. More than eleven times I went to Tanyanghsien. The last time I remained there until the purchase of the land was accomplished. In May I made a trip to Tansiehchiao.

I am now suffering with a severe attack of heart trouble and am under doctor's orders to be quiet. It is impossible for me to enter into active service now, I beg for a time of recuperation.

---

Chinkiang, Ku., China, October, 1920.

To the brothers of the Annual Conference, Greeting.

A year passes so quickly and one accomplishes so little in that time that it is hard to make a report and not have it seem either padded or else too meagre for the investment involved. Our Evangelistic effort for the year is comprised of two revival campaigns, one just after Conference and one at Chinese new year, backed up by a constant evangelistic effort and emphasis in the regular work. The reports of the Pastors will show that these have resulted in many additions to the Church membership during the year. A larger percentage I think of increase than has been shown in many years, but of this we can not boast, but rather grieve that it has not been greater.

One of the most joyful aspects of the year's work has been the happy and cordial relations among all of the workers. It has been a joy and a privilege to work with the men of the Chinkiang District. Praise the Lord for such fine Christian brethren. Our District Superintendent has been absent for most of the time, because of activities on the Yunnan commission and of illness. As best we could we have tried to do his work. The greater part of this has been done by Pastor Li Chuen Fang, in addition to his manifold other activities. Brother Dju Tsian P'ei has come to us with credentials as a Local Preacher from the Southern Methodists at Shanghai during the year, and has been successfully carrying on the work as Pastor in Tanyang, which was his original home. Brother Tong Kuang Yui has been licensed as a Local Preacher and has been a very successful pastor at Nien Yu Tao.

The greater part of the activities of the Missionary in charge during this year have had to do with bricks and lime and clay. The purchase of the property at the front of Yu Shing Kiai Church was completed and the title to the property secured. For this we thank God. This land has been desired for ten years and has just become possible as a purchase. Following this with much bargaining and many knotty problems a very desirable property on the main street of Tanyang was secured and the purchase of this is also now completed. Our grateful thanks are due to the Stewart Fund, which at the hands of Brother Blackstone has helped very materially in this.

Then we have rebuilt the Church at Yu Shing Kiai. By adding fifteen feet to the length and putting a gallery inside on three of the sides, the seating capacity has been at least doubled, if not more. This has also relieved the stiffness and emptiness of the Church and made a much more attractive auditorium without impairing the acoustic properties. In Beh Tu, also a new Church building has reared its head and is now very near its completion. This building dares to attempt the combination of Eastern and Western architecture. We will invite you all to come and see whether this has been a success or not. At any rate the Church is very comfortable indeed, and quite adequate to the needs of the community.

These with the opening of three new schools and the renting of two new halls for opening new work comprise the accomplishments of the District Missionary in Charge for the year. There has been of course the general supervision of all the work, the keeping of accounts and the unnumbered small things that make up one's life here, but with all it seems that little indeed has been accomplished, and we pray the Lord to help us to do greater things as we go on. Hundreds of miles over the District on foot, on wheelbarrow and motor cycle have given us hours of quiet meditation with Him, and the work has been very, very dear. It is wonderful what He does for us while we are trying to do a little for Him.

A word should be said perhaps about the entertaining of the District Conference last Spring. We received a great blessing from this event, and while we know that our facilities for entertainment are not as satisfactory as those at some of the other places, we hope that the Conference may feel constrained to accept our standing invitation to come again.

A word should be added in appreciation of the great help we have received through the gifts which are now coming from Centenary givers. Through these gifts and the kind help of Mr. Blackstone with the Steward Evangelistic funds, a new field lies before us ready to be developed in Tanyang. A special gift is being received annually from the Methodist Church in Mansfield Penn. which when received in full will build an adequate Church on this site. A member of this same Church is making contributions toward building a Chapel on the Chinkiang circuit while another member of the same Church makes regular contributions for support of the Pastor at Tanyang. Another special gift from the Epworth League of the Methodist Church at Chevy Chase, Maryland is making possible the new church we are now building at Pehtu.

With a prayer that God may bless you all in your so great work, and with a wish for your prayers in the tasks which we attempt to do, this report is respectfully submitted for your charitable consideration.

D. F. DODD.

District Missionary in Charge.

## The Report of Chinkiang Church Condition

BY LEE CHUEN-FAN

October 29, 1920.

I am joyful to report the work during the year, as it has proved to be successful. It seems that I being an old man, with heavy responsibility can hardly fulfil the duty but thanks to the conference Pastor Liu Wei-i was appointed to assist in the work at the last Annual Conference. Pastor Liu has spent a large part of his time preaching. In regard to the scheme for expansion and establishing work such as purchase of land, buildings etc., we have the District Superintendent and Missionary in Charge to care for that. My energy is largely exerted in managing the affairs of a few schools because I realize that education is the best of all methods to lead men to Christ as well as to lay the foundation for Christianity. Beside we have had jail evangelistical work in Tang-yang for which Pastor Liu and I have been working alternately. Sometimes I accompanied the District Superintendent and Missionary in Charge going to Shangtang, Peh-tu and the rest of the places for evangelistic work. In short, although the Church movement during the year has been successful I would attribute all these to our fellow workers joining us. I myself am but a bond-servant and owe the debt to all with whom I come in contact.

As Pastor Liu is responsible for reporting the membership and contributions of the Church, therefore, I can here report only the school accounts.

### The School Account

FIRST SEMESTER		FIRST SEMESTER	
	\$ cts.		\$ cts.
Received of 97		Paid board: 15 boarding students @ \$18.00 each 10 day students.	350.00
Students, fee.	950.09	Paid salaries for teachers and workmen.	675.50
Received of mission fund.	370.00	Paid uniform.	128.50
		Paid equipment, stationery, lights, gymnastics, etc.	152.00
		Balance	14.09
	<u>\$1320.09</u>		<u>\$1320.09</u>

As to the account of the second semester, at present we haven't yet worked it out. But we estimate that it will be more or less similar to that of first semester. In addition we have now newly opened a Higher Primary school at Peh-tu, and two teachers have been engaged and there are 25 students. The condition there is very promising. We hope and pray that God will bless the work.

### **Report of Nanking District, for 1920**

EDWARD JAMES, *District Superintendent*

Dear Fathers and Brethren,

The purpose of this report is,—1, To review the past; but this chiefly. 2, In order to plan more intelligently for the immediate future. The key word of the first is Ebenezer; of the second, Excelsior. In both we recognize our Christ as the All In All, and that apart from Him we are nothing and can do nothing. So it is praise to Him for the past year, which has been the best in our history, and dependence upon Him for the future, which dawns with unprecedented promise. And yet,—were we permitted a personal word—, all this brings dissatisfaction to the District Superintendent as he realizes the physical impossibility of one man's keeping pace with the multiplied and varied needs of this great and expanding District. Thanks be, relief is in sight.

For this year's work we report,—

1. More people hearing the gospel than ever before,
2. More people in Sunday-schools and Bible classes,
3. More pupils in our Primary Schools,
4. More money received on Pastoral Support,
5. More people baptized at our altars,
6. More forms of instruction and inspiration,
7. More vital thinking on Church problems and plans,
8. More Church consciousness.

Because of Centenary aid, at *Hocheo* we are building new chapel, new parsonage, and new high school; at *Kiang-ning-chen*, a new parsonage; at *Siao-tan-yang*, enlarging the school; at *Tao-wu*, a new school and parsonage; at *Kiang-tang-kiai*,

in the business heart of Nanking, we have bought all the land we need; and at *Shui-si-men* we have secured a very eligible site; at *Shang-hsin-ho* we have bought an excellent place on the main street; and on *Hwa-pai-lou* we have rented and fitted up for preaching, etc., a most desirable location. In other places on the District we have made necessary repairs, and added substantially to the equipment. Thank God for even the partial appropriation of this first year,—we are meeting some of the more pressing smaller needs. The great tasks have not yet been begun:—we must wait the assurance of next year's appropriations. But our work and workers are greatly strengthened by the first droppings of the shower.

The year has been one of marked spiritual growth. Special meetings have been held in most places,—but nothing in the nature of a campaign such as is described as held in some other Conferences. Our field and force make such organization and demonstration impossible. Nevertheless, at our last Annual Conference we pledged ourselves to aim at an increase of 25% in communicant membership. By divine grace we have arrived at that goal. Also our new financial movement is of distinctly spiritual value. Last year we definitely set ten years as the limit of time within which to attain pastoral self-support for existing evangelistic work, and a Pastors' Committee worked out the details. The parishes were arranged under four classes and apportioned an advance on their pastoral support of \$30., \$25., \$20., and \$10., respectively. Every church has met its apportionment in full, and several have gone beyond. This has resulted in an advance of 65% in pastoral support on this district (apart from Ku-i-lang). Only an increasing sense of stewardship, and partnership with God can produce such unprecedented results. Now we have made the first step, and are definitely on the way toward the goal of a selfsupporting, selfrespecting, and spiritually aggressive Church. God give us grace and patience to pursue this path to the glorious end,—which means to make such financial adjustments and plans as shall favor this end. For to us it seems that there is no other financial issue of such importance to this Conference as this matter of pastoral support. Let us not confuse this nor prejudice it by the introduction of any other financial issues or campaigns until the success of this is beyond recall. In a large sense money is the measure of

the man,—1, How he gets it; 2, How he uses it. Hence “it is easier for a camel to go through the eye of a needle than for a man who loves and trusts in his money to enter the Kingdom of Heaven.”

Boys' Primary schools were never before so flourishing in this part of the country, not counting the Conference Academy we have more than 700 boys in the schools of this District. Such figures almost make us dizzy,—yet there is only one reason why we cannot double or triple the number,—lack of resources. It should be known also that, on the one hand, the standing of these schools is high; pupils coming from our primary schools to the higher schools in town are usually a year or more in advance of their class; on the other hand, these schools raise by tuition much more than we appropriate,—they are more than half self-supporting. We do not fear government, nor private competition, but earnestly pray for large addition to,—multiplication of,—primary schools.

Speaking of educational aims and methods,—we had hoped to have a completely literate Church this year, but have not fully realized it, though decided progress is made. Fairness compels us to recognize that the National Phonetic Script is not popular in this region. In truth most people either laugh at it, despise it, or ignore it. Very few people can be persuaded to regard it seriously. What the future may accomplish in this remains to be seen. The percentage of illiteracy in city churches is small;—it is larger in the country churches, though the percentage of illiteracy in the church is much less than in society in general. But we have several groups in the People's Schools, with their 600 characters, and classes studying such books as *Short Steps to Great Truths*, etc. The new National Consciousness is greatly stimulating these, and the new National Language,—the Kwoh-Yu,—and it is not improbable that for the present our hope lies here.

We sometimes hear it said that the Missionary must more and more give up ministering and devote himself to administering. It is to be regretted if this idea grows too rapidly;—I venture to disagree entirely. It is not that our Chinese preachers cannot talk the Chinese language better than we can;—but we surely ought to know the language and

life of the KINGDOM better than they. Missionaries come with the background of 19 Christian centuries; long ago freed from most of the insidious superstitions of paganism; possessed of Christian ideals; knowing largely of the power of godliness; with a passion for Christ and His Church as the only hope of a sin-cursed world; we have known the truth, and we feel its violent contrast to error; we walk in the light, and feel its incompatibility with darkness; we have a message of life that leaps within us seeking expression for the purpose for which it was given to us. We have not come as ministers of the gospel simply, or chiefly, to plan buildings, or organize committees,—by all means let there be proper agencies for such work;—but there must be missionaries to specialize on preaching the WORD, to instruct, explain, illumine, exhort, persuade, inspire, to bring that fuller, richer, more potent gospel that grows out of our richer Christian heritage. This is the very ground and foundation of the Church, and its spiritual life. This is immediately imperative; that can wait. Though sometimes almost smothered under administrative duties,—building plans, financial plans, committees, accounts, reports, correspondence, interviews, etc.,—I make no doubt that my greatest service,—that counts most for the kingdom,—is that of sharing with our preachers in the Ministry of the Word. Herein is life reproductive. I trust that the Church will make it possible for our younger men in due time to enter into this inheritance, and make their contribution here, adding their own deeper and richer experience, knowledge, and aspiration into the otherwise feeble pulse of the infant Church.

All our preachers have done well this year. Everyone is able to give good account of himself. It would be invidious for me to single out names; they will present their reports.

Again I would express the hope that this district may be divided this year;—not that I wish to part company with any of the brethren, but under the conviction that the best interests of the work demand it. During these recent years work has so expanded and interests so multiplied that one man can no longer give the care required for healthy growth.



### **The Report of Kiangtangkiai.**

The work of Kiangtangkiai may be roughly divided into two kinds: those within the sphere of the church and those of the society.

1. Church developments: They are largely concerned with the work of spiritual uplift. The organizations—as Bible Study, Christian Club for Young Men, Epworth League, Volunteer Band, Sunday School, Reading Room, Chapel Talks, Personal Work and Preachings in the Prison—are very promising and effective. Beside these, there are Intermediate and High Schools with a present enrollment of more than a hundred students. All goes on with perfect harmony.

2. Social activities: Things that relate to social betterment, public sanitation, promotion of education, and poor relief are participated in by the church. Indeed, we have plunged ourselves into various walks of life, that are “constitutional” to christian spirit and teachings. In this way, can Kiangtangkiai be likened to a “tentacular” organism?

With reference to the number of the church members, and lists of contributions, please look at the report.

Respectfully submitted by

CHOU KIA-YUNG.

### **Report of Ningkuofu District**

TUNG YUIN-SENG, *Superintendent.*

Time flies like an arrow and a year is again passed. Beside the works which are somewhat similar to those already reported last year, I beg to present the other conditions as follows:

1. Utilizing the first week of the Chinese New Year, we formed four groups among the pastors, teachers, and church members, each with a banner of five Chinese characters,—meaning “Circular Preaching Band,” which marched out daily around the surrounding districts and streets, some preaching, some selling gospels and distributing pamphlets, and others helping in singing. The result was marvelous.

2. Shui Yang, formerly a branch church, has become a circuit this year. It has 8 baptized members, 14 probationers and 20 enquirers. The contribution amounts to \$23.50. The average church attendance ranges from 60-70 weekly. For our permanent church site, we bought a very big property on the opposite bank of the river. This place marks the border between Anhwei and Kiangsu and is situated between Ning-kuo-fu and Kao-shun. The total sum paid from the foreign missionary contribution for both the property and repair was \$2300.00 Mexican.

3. For about two years we have intended to establish a church in Kao-shun but because the Presbyterian Church planned to open a church there also, we didn't start the work until this spring. We are renting a house near the East Gate, and had the opening meeting on the 17th of August, when a very big crowd including the magistrate and several leading members of the gentry were present. Beside several speeches made by our teachers and pastors from Ningkuofu, speeches were also made by several guests. The people there are especially noted for their antique taste. They heartily welcome christianity. It has been investigated that about 200 of the whole population there have heard about christianity somewhere, and two of them have thrown away their idols and become faithful enquirers. Mr. Wang En Hao is now in charge of the church, and on account of the good beginning we made for him in a field comparatively easy to cultivate, we hope his work will grow by leaps and bounds.

4. In order to make good use of the evenings in the hot summer days when most people wander about the streets, we organized a so called, "Public Speaking Society," of which Messrs. Tsü Ming Kwan, Han Ching Kwei, Tung Hwa, Shih Tan-chi, Tung Chi-hsioh, Sung Teh-hsiao and myself spoke daily from 7 p.m. to 10 p.m. on all subjects, on Education, Sanitation, Public Health, Patriotism, Science, and especially Thursday and Sunday on Christianity. The ground outside of the church at Ningkuofu was crowded with an average of 200 people daily. We held these meetings for six weeks except on rainy days. These meetings brought good results.

5. In view of the fact that the motive power of personal work comes from private prayers, we then issued a number of cards on which the names of those for whom one is praying may be written down. More than twenty members kept the promise of praying for others.

6. Beside the regular Bible classes in the week day school and in Sunday school, we again divided our church members into three big classes—one for teachers, one for members, and the other for probationers. We held Bible study classes every Sunday evening, and at the same time a special Bible class for the students of the People's School. We are very much obliged to Mr. P. Hutchinson, for the various pamphlets he sent on "Public Service," "The True Christian," "The Citizenship of a Christian," etc. Had they been written in mandarin, they would have been much better.

7. In regard to self-support, we believe the goal will not be far off from us. Although the contributions this year did not greatly exceed that of last year, yet the members who contributed this year, have excelled those of last year. The work at Ningkuofu is but 7 years old this year in the matter of self-support. Ningkuofu circuit instead of being in the second class this year, decided to be first class next year, and Shui Yang circuit decided to go one step higher also. Although Shwan Chiao can hardly be ranked with the others, it is keeping up nicely.

8. With regard to the schools of this whole district, Shwan Chiao Primary School has 34 students and received over one hundred dollars from tuition this year. They have four graduates this coming fall.

Shui Yang Primary School has 39 students and received \$96.50 this year. There were 7 graduates last year, one of whom was baptized and 4 are enquirers.

With regard to the Wannan Academy of Ningkuofu circuit, details may be seen on the report on Wannan Academy.

9. The most urgent need is a Chapel. Although for a long time we had the intention to build one, yet on account of the financial difficulty the work did not start. We are temporarily using a class room for Church Services. Instead of the accommodation suitable for at most 160 people it holds

now every Sunday at least 250 people including students and church members. Since the plans have been made for the building, I hope it will be completed for the Commencement of Wannan Academy.

From the above mentioned things we see clearly the guidance of our Heavenly Father, and thank Him for His blessings.

### **Report of the Wannan District**

JOHN R. TRINDLE, *District Superintendent*

We close the year with a deep feeling of thankfulness for God's goodness and guidance, and we face the future with profound faith that He who begins a work will accomplish it to His glory.

As anticipated in our last report, the work in and through the government schools has made the best show of fruit gathered. Of the thirty-four baptisms reported at the fourth quarterly conference seventy percent came from the faculties and students of these schools. Since then, and not reported in the statistics for this year, two classes of nine and thirteen respectively have been baptised, and of these again ninety-nine percent are from the government schools.

It is gratifying to note that in addition to the moral support of the heads of these schools and the direct testimony of teachers and students in their native villages two promising men, a graduate from the Normal School and a student from Anking have been added to our staff of workers. Of the twelve local preachers on our quarterly conference roll two are employed outside the district and two are attending the Union Theological School at Nanking.

We have nothing but praise for the spirit and earnest zeal shown by our associates in the work. Dr. Charles' years of experience with the Chinese have made him invaluable. Naturally much has depended upon him in connection with buying land and overseeing buildings with their multiplicity of perplexing problems. This with the taking care of those who always come for medical assistance has kept him busy. The quarters now used for a dispensary are impossible for any expansion without an expenditure of money scarcely

justifiable for such manifestly temporary provision. Several attempts have been made to secure property on the street which could be more permanently equipped. Just now negotiations are being made for a suitable site with building, and a critical stage in the thankless task of clearing deeds and buying bits of land to round out our residence compound is keeping evangelist Hu away from the Annual Conference.

Dr. Martin is to be commended for his persistence in carrying out a schedule itinerating through the three mission schools and the four government schools where we have had regular work of preaching and teaching. The remarkable patience of both Dr. and Mrs. Martin in entertaining the crowds of curious callers always in evidence during the opening years of a new work should be noted. The presence of his family has been a great blessing in giving points of contact, breaking down unfavorable prejudices, and enabling Dr. Martin to concentrate his whole effort in the station.

Of our Chinese associates Cheng Siu-chi early in the conference year answered a call to join the faculty of the Union Theological School, Nanking, and Wang Pan-chia, who did faithful and effective work in the government schools, with Hong Hsi-wen, who held a responsible position as teacher in the Commercial School, Tunki, is attending the same institution. Fang Ren-shan, Hu Liang-pu, Hsu Mo-tang, Ling Cheng-chi, Tsai Pu-ching, Tseng Tsai-ching, Wang I-cheng, and Yu Mo-ren have been untiring in their effort to spread the gospel message through chapel, schools, and outlying villages. The day school teachers have participated with deep interest our various religious exercises.

The almost daily chapel preaching, while it sometimes seems to yield little fruit, is the best kind of a training school for prospective preachers and it is undoubtedly indoctrinating large numbers of people. Several additions to the church and one local preacher came through this agency.

Still adhering to the principle that no preacher should be appointed to a place until there is a substantial membership to insure a reasonable degree of self-support, we have conducted a 'moving preacher' campaign in which our

preachers have circulated with some variety of irregularity through the preaching places already established (see appointments). Our present plan is to do as much as possible through the regular channels and yet not curtail the expansive effort in the way of evangelistic bands of a semi-chautauqua nature not only reaching places already opened but pushing out to new places just as far and as often as possible.

A recent visit to Kimen and Ihsien convinces us of most wonderful possibilities along this line. At Kimen representatives from the hsien official made a first call expressing deep interest in the work we were doing and pledging their moral support. The principal of the middle school, Mr. Wang Sheng, arranged union meetings of all the schools in the city and promised his personal assistance on future visits. With Kimen as a center as many as fifteen schools, representing an enrollment of about five hundred, are waiting to welcome us. At Ihsien we were given the best building in the city in which to hold a meeting. The chief of police conducted us in person on a street preaching tour and assured us we would be welcomed for a more extended visit in the future. Equally as favorable conditions obtain in each of the other hsien cities.

With these evangelistic bands we hope to carry out the second part of the command 'Go ye etc. etc.' (Mt. 28.19) and *teach* those who have already been baptized and others who may come to us. 'Every member a live wire' means persistent follow up work. It is gratifying to note that our need for workers has been remarkably met by men who understand local conditions. Observation leads us to believe that regenerated graduates from the government schools are even better able to present the gospel to a purely heathen audience than graduates from our own schools of similar grade. They are less likely to be of the hot house variety and more or less educated away from their people.

It is our thought that a temporary suspension of the regular schedule in preaching places already established, such as the chapel and school appointments, in order to carry out these expansive measures, will not only mean variety and

inspiration for the workers but it will enhance the appreciation of the people temporarily neglected.

At the first quarterly conference it was decided that, beginning with the Chinese New Year, we would make tithing our standard of Christian stewardship. Repeatedly emphasis has been laid on this phase of Christian life. We are convinced that without the actually putting into practice of this supreme test of consecration not only is the cause of self-support hopelessly lost but a living growing church is impossible.

The statistical report for the year closing with the fourth quarterly conference held October 4th is as follows:

#### *Membership*

Received this year.....	38
Total .....	51
Baptised children .....	8
Total probationers .....	16
Enquirers.....	80

#### *Financial*

Pastoral support .....	\$111.40	
Missionary Society .....	5.00	
Home Missionary Society ....	5.00	
Women's Missionary Society ..	2.00	
Bishop .....	2.00	
Conference Claimants.....	1.00	
Local Charity .....	10.80	
Miscellaneous .....	10.80	\$148.00

#### **The Wuhu District, 1919-1920-**

The best thing that has happened on this district during the past year is the opening of the new work at Tsai Shi Gi. Here we have been enabled to surmount annoying obstacles and secure one of the finest locations in this flourishing town. We have property adequate to house all our work including chapel, boys' school, parsonage, girls' school and quarters for Bible woman and girls' teacher. Already we have a local preacher here who has started a school and now has nine

regular pupils. We want to lay the foundations carefully here, as it is adjacent to Tai Ping Fu.

Perhaps the next best thing was the teacher's institute last spring, when we had all of our men and women teachers in for a week's conference. This has meant much to our teachers and one of them especially has gone back to his school a new man and I can hardly keep pace with him. Nearly all of our schools are better taught, equipped, or housed than last year. But at Second street we lose all our older pupils after we have spent years training them because we have no quarters for pupils who want to live and board there. This matter must be remedied. Our main educational work should be here.

We have also succeeded in meeting our increased proportions for self-support on the district. Many of the membership are beginning to feel a new self-respect and independence and desire to help themselves. Of course there is much left to be desired but conditions have improved somewhat. We must all learn that Christianity means a great deal more than giving up idol worship.

We have had a few definite conversions and not a few people who are enrolling themselves as inquirers or probationers. One of the finest conversions perhaps is that of a police official who comes and worships and gives. At Tai Ping Fu also there is a new interest in the church and respect on the part of the community. At Hwang Chi the church means much more to the people.

In the problem of illiteracy we have not done as much as we had hoped. At Ih Chi Shan some faithful work has been done and a few have learned to read the phonetic. Dr. Brown is publishing a hymn book in phonetic. At Second Street Mr. Lee has had a night school of ten odd regular pupils studying the 600 characters and they have made excellent progress. Most other places are difficult as the membership is scattered and it is difficult to form classes. We can hardly get some to church, leave alone a weekly class meeting. Practically all who can read have Bibles. And we have a few members apart from the preachers, teachers and Bible woman who are competent to take a class. Of



course it is difficult to find people who can or will give the time for this work.

For our own encouragement we should remember that mission work is more or less to be credited for all progress in China, so that we can rejoice in all forward movements, all good works inside or outside the church. So we rejoice in a new government school at Ti Kan and a prospective girls school there. In this school I saw a picture of a girl with natural feet and I pray it may have a great influence for in that place all the little girls *still* have their feet bound. Several girls in our school have unbound their feet. We rejoice that Yui Tsao is seriously considering giving up its heathen ceremony of parading the gods and of using the money instead to buy a fire engine. We are glad that the pugnacious Catholic father at Tai Ping Fu has been removed. And we appreciate little things like the Customs at Wuhu giving \$200 worth of surgical instruments to the hospital. The lot which we bought at Second Street for \$1200 we could sell for \$3000. We need to bear in mind also that mission work up till the present has been more extensive than intensive. We think the time is drawing nearer when we can do more detailed, intensive and effective work. Of course, this must mean reinforcements. Without doubt the greatest need is for trustworthy, well trained, consecrated men who can bear responsibilities. We dare not open new work without them, nor entrust funds or important undertakings to men who are not ready. We are looking to our Academy and other schools to give us the men we need. May God raise up men. Meanwhile let us rejoice in a growing understanding of the Gospel by the masses and an openness and friendliness to Christian activities. All society is undoubtedly being leavened.

Finally there are a lot of painful things that I might say but I am sure it is best to refrain. We must hunt for the best and thank God there is much to be glad for. I heard a doctor who has been in China thirty years say that we all should rejoice in this, that there are more good people in China every year. So let us go bravely forward making goodness contagious, assured that Christ can never know defeat.

LYMAN L. HALE.

## REPORTS OF INSTITUTIONS

### Report of the University of Nanking

A. J. BOWEN, *President*

This report covers the period from January 1, 1920, to January 1, 1921, and it will be understood that the work reported is a union work of several missions and not exclusively that of our own church.

We believe we can clearly see evidences of God's gracious leadings in this union work. We have now completed a full decade of union work and have ten years of union experience behind us. We believe that union effort in higher education has been proved both practicable and desirable. We are pleased to believe that we have the entire confidence of our co-operating missions; of the Chinese people, both local and at large; of the community; of many commercial, industrial and manufacturing interests, and of the great church at home. The co-operating boards are giving us loyal and enthusiastic support in every possible way to a very encouraging degree. We believe we are justified in saying that the foundations are laid deep and strong, and in the main along right lines. And perhaps of equal importance, they are so laid that others can build thereon, that no one or two men are entirely indispensable for the continued development and progress of the institution.

It is well, however, to remind ourselves that we have done more than lay foundations and establish ourselves rather favorably. I believe we have set forth certain ideals and given some degree of leadership in several directions that are of much importance to Christian higher education.

We were, I believe, the first to start a thoroughgoing union in higher educational work and to make union and affiliation the normal development now in China.

We were the first mission school to break away from the traditional four-year American college course and adopt the Chinese government organization of junior and senior colleges of five years. Many others have followed our example.

We have set a standard for higher education marked by the number and quality of men on our staff; by the number of hours allowed per week for a college student; by entrance requirements; by equipment and budget provisions and by the quality of work done in general.

We were among the first to call in strong, representative Chinese on our Board of Managers, and have made a larger use of returned students than the usual mission college.

The following figures of the ten year developments will illustrate growth (exclusive of all medical development).

1910		1920	
<i>Students:</i>		<i>Students:</i>	
College .....	29	College .....	270
Total enrolment .....	501	Total enrolment .....	780
Graduates, 1910-1916 incl. ..	41	Graduates, 1920 .....	41
Provinces represented .....	8	Provinces represented .....	18
<i>Teachers:</i>		<i>Teachers:</i>	
Chinese .....	20	Chinese .....	45
Foreign .....	17	Foreign .....	33
Board-supported .....	10	Board-supported .....	17
Non-board-supported .....	7	Non-board-supported .....	16
<i>Departments:</i>		<i>Departments:</i>	
Arts College .....		Arts College .....	
High School .....		College of Agriculture and Forestry .....	
Intermediate School .....		School of Education .....	
Primary School .....		Junior College .....	
		Language School .....	
		Middle School .....	
		Primary Schools and Kindergarten (Model School) .....	
		Summer Schools, Agriculture and Education .....	
<i>Quality of Work:</i>		<i>Quality of Work:</i>	
Library Books .....	2,000	Library Books .....	15,367
Loans recorded .....	None	Loans recorded .....	22,961
<i>Courses offered, e. g.,</i>		<i>Courses offered, e. g.,</i>	
in Chemistry .....	2	in Chemistry .....	22
in Economics and Sociology ..	2	in Economics and Sociology ..	10
in Physics .....	3	in Physics .....	5
in English .....	4	in English .....	15
American-trained Chinese teachers .....	0	American-trained Chinese teachers .....	8
<i>Buildings:</i>		<i>Buildings:</i>	
School Buildings .....	9	School buildings .....	18
Houses .....	9	Houses .....	17
<i>Land:</i>		<i>Land:</i>	
Approximately acres .....	20	Approximately acres .....	96
<i>Total Property:</i>		<i>Total Property:</i>	
Approximately .. Mex. \$200,000		Approximately .. Mex. \$850,000	
<i>Students' Fees:</i>		<i>Students' Fees:</i>	
Mex. 23,000		Mex. 59,000	
<i>Budgets:</i>		<i>Budgets:</i>	
in Mex. (1912) .....	37,300	in Mexican dollars .....	162,740

It is a satisfaction to report that all of the agreements and undertakings of the boards have been fully met. In the two or three instances where the desired men have not yet been found the board interested is providing the salary. Beginning with January 1, 1920, the four main co-operating boards have added one man each for the Agricultural School, thus making five men now supported by the Christian, Methodist and Presbyterian Boards, and three by the Baptist Board.

The enrolment for the two semesters was as follows:

	Autumn Semester	Spring Semester
	1919	1920
College of Agriculture and Forestry	25	21
College of Arts.....	40	52
School of Education (Junior College).....	18	35
Junior College.....	159	138
Short Course in Sericulture.....		34
Middle School.....	226	224
Model School: Higher Primary ..	163	141
Lower Primary ..	31	31
Kindergarten ....	15	15
Nurses' Training School... ..	25	26
Language School .....	86	101
	<hr/> 788	<hr/> 818

The students come from ninety-five middle schools, with all eighteen provinces represented, and five foreign countries. In the colleges about 60% are Christians and in the lower schools, about 45%. Eighty-two of the Christian students are Presbyterians; one hundred and thirty-three, Methodists; twenty-five, Baptists, and seventy-six, Disciples. Forty-two per cent of the College students were from non-mission schools.

The graduates for 1919-1920 from degree-conferring departments (B. A. and B. S.) were thirty-eight, which was exactly the same number that was graduated from the University during the first eight years of its operations as a union school. The graduates of 1919-1920 were as follows:

College of Agriculture and Forestry..	19
College of Arts.....	19
School of Education Higher Course..	5
Junior College.....	25
Middle School.....	35
Higher Primary.....	12
Lower Primary.....	8
Kindergarten .....	4
Short Course in Sericulture.....	34
Total.....	161

The total amount received from all fees was \$61,867 Mexican. Beginning with September 1920, the fees are being increased about fifty per cent.

The religious life of the students has been carefully nurtured, and the Y. M. C. A., under the leadership of Mr. Weigel, has been active in its usual routine and in the conduct of some six or eight people's schools. Special meetings were held both for the College and for the Middle School students, with very good results. But the quiet, daily personal work of members of the faculty in personal work and in social contacts with the students has brought in quite a number of the leading students and has deepened the spiritual life of all.

One of the most important developments, we believe, in its future effect on the work of our mission is the reorganization of the theological courses so as to afford a post-graduate course for college graduates; also the introduction of the junior college standard. While the Seminary is not organically a part of the University, we are vitally interested in its work and in getting our college students into the direct ministry. We believe that the Seminary as now organized will make this possible, and that the University will soon function more largely in the fundamental purpose for which the University exists.

The work of the College of Agriculture and Forestry in helping China in practical ways, such as improvement of wheat, improvement of silk culture, the development and improvement of cotton growing, is of prime importance, and a great help to the whole missionary cause. Practically all

of this experimental and improvement work is supported by the Chinese.

We wish to express our very deep appreciation to the Boards that are so generously helping the University, to the missions that co-operate so helpfully, and to our whole staff, individually and collectively, for the faithfulness and devotion with which they perform their various tasks. God is richly blessing us and we are very conscious of His leadership.

### **Nanking Theological Seminary**

H. F. ROWE.

This report has to do with a year when the opportunities have been the greatest we have ever faced. The attendance has increased one fourth, while the educational preparation of the men is constantly rising. In the face of such facts no difficulties are recognised.

With the dry facts that there are five denominations co-operating, that there are students here from thirteen denominations, from as many provinces, that the total number of students registered last year was one hundred forty, with all this most of you will be familiar. Those facts seem to mean that the Church in China has large confidence in the School. The heavy expense for travel, the school expenses for three or four years, during which period it is usually not possible for those from a great distance to return home, the difficulties some men have in acquiring Mandarin, and the break with home conditions which a three years' absence from home necessitates, these are some of the obstacles which are faced and overcome by the Missions whose fields are far from Nanking. For the co-operating Missions, there is a very large expense connected with providing the plant and supporting the institution. As is the case with Theological Seminaries in all lands, it is not possible to receive from tuitions more than trifle.

These picked men from so many missions are not sent to us to "finish their education," that we know right well. As we conceive it, they are sent here to be educated in the religion of our Lord Jesus Christ. We understand that it is the hope and prayer of those who send them to us that they shall return to their home field fitted to become pastors of

the flock, leaders of the Church, men of God who shall be worthy examples, imitators of Him who is our Example as well as our Saviour. While we cry aloud, "Who is sufficient for these things?" we face the task the Church has set us, determined that by His might we will give our all to accomplishing of that task.

Some objectives have come to us out of the year's experience. Towards these we strive, knowing full well that the results are not always at our command.

(a) We strive to bring to every man a deep experience of the Power of Christ in his own life. We are not concerned about terminology as it has to do with this matter; we are concerned that a transformation that is real enough shall have broken up the great deeps, shall have taken place. We desire that his life in Christ shall become a life of the spirit rather than one of mere literal dogmatic belief. We hold that only a religion of experience can send men forth with burning evangel, hence we travail to lead them to that place of power.

(b) It is our aim to bring to the heart and intelligence of each man an acquaintance with a body of truth. Experience and an intelligent faith are not mutually exclusive; they are rather mutually supplementary. Without experience, faith is apt to become lifeless; without a body of truth, experience becomes dim and shallow. The faith once delivered to the saints, and the faith now being delivered to the saints by the presence of the Holy Spirit fulfilling the promise of Christ, this is carefully taught to every man.

(c) The Bible is taught as the Book which is God's revelation of Himself to man. That revelation is so clear, so infinitely above that which is shown us in the other religions of the world, that it is the most precious heritage of all the ages.

The Father is shown to us dealing with us as with children, striving to lead us into fellowship and communion with Himself. The Son, Jesus the Christ, is the Divine Saviour, coming forth from His eternal habitation with the Father, offering up once for all that sacrifice which means the redemption of the world, rising from the dead and going to be with the Father, but shedding Himself abroad in the

hearts of men who call upon Him. The Spirit is the Comforter, the Giver of Power, leading men into "all truth." He is present now; He abides. These truths and many others which bring comfort and life, are found in that Book and are all faithfully taught.

What of the results? It must be remembered that we did not begin until 1911. Not one graduate has been out more than seven years. In western lands it is not usually the first seven years which bring fame or great achievement. However, the fact that the Missions are sending more men to us as fast as they can find proper candidates would seem to indicate that the School is rendering a service which is helpful to the Church. We can go farther than such a general statement. One Mission sent us two men. The way was long, the expense was heavy; it was an experiment, for the men did not know Mandarin. Both men made good and were graduated. The first year after they had been in the work at home, that Mission sent us seven men, while this year, the second year, they are sending us five more. Another of our Methodist Missions, after making the experiment, is taking from the ranks of its ordained ministry each year two men who are sent here for one year's study.

In the Central China Conference there has in the last five years been but one man received into the traveling relation who is not a graduate of this School. All our young men are Seminary men. If we had five times as many men of this sort applying for admission to our conference, we should receive them all, even though it were necessary to call less missionaries to the field in order to support them.

There are now one hundred and twenty four graduates. The first class numbered but two, but we are now graduating from twenty-five to thirty-five each year. If, as now seems probable, there shall be graduated in the next ten years three hundred candidates for the ministry in China, that will be a contribution to the Christian movement in China second to none now in prospect.

What of the plans for the future? The Board of Managers, half Chinese and half missionaries, are forward looking men. The Bible School Course, for men of meagre



preparation is to be discontinued. There will be courses offered for three grades of men. First, a four years' course will be offered for Middle School graduates. Second, there will be a course offered for Junior College graduates. Third, there is a course, almost entirely in English, for college graduates. That so greatly raises the standard that it is almost revolutionary. It says that the grade which has been the highest for which we formerly sought is now to be the lowest, but that even this grade of men must now take a four years' course. It provided a way by which junior college men may make their senior college a theological course, taken in the Seminary, receiving a B. A. degree from either Soochow University or the University of Nanking.

Once again, what of the future? It is with the Church. The outstanding problem is that of educating men who are worthy to undertake the work of the ministry and then persuading them to accept the call of God to this high task. We want no man-called men; but the Church must present the call so convincingly that men shall say, "Woe is me if I preach not the Gospel." The Church must not get away from the conception and the belief in a call from God as a religious experience. And the Church, her pastors, her laymen, her missionary pastors, must seek out these men and direct them to the call of God and then send them to the Seminary. Pray ye, therefore, the Lord of the Harvest that He will thrust forth laborers into the harvest, then go forth to make possible an answer to your prayers.

### **Central China Conference Academy**

JOHN A. LEWIS, *Principal.*

#### **1. Purpose of School**

The purpose of the Central China Conference Academy is to provide a fully accredited strongly evangelistic Middle School education for sons of our constituency, in particular, who are already under christian influences, with the hope that from among them a large majority shall be led of God to enter the ministry and teaching profession of the Methodist Episcopal Church.

**2. Entrance Requirements**

Those who shall be admitted shall have passed required entrance examinations and shall be well recommended, preferably by teachers, pastors or district superintendents.

**3. Grade of work**

That for the Spring term of 1921 there shall be three grades only—the third year Higher Primary and the first two years of Middle School with an enrollment for this opening term not to exceed forty. As soon as possible the Higher Primary work will be dropped out and the school be altogether devoted to work of Middle School grade.

**4. Estimate for fees per term on two term plan**

Tuition .....	\$19
Board .....	20
Incidentals .....	4
Breakage .....	1
Atheletics .....	1
Uniform .....	5
	<hr/>
	\$ 50

**5. Number of teachers**

Chinese Classics .....	3
English .....	3
Mathematics .....	1
Geography .....	1
Science .....	1
	<hr/>
	9

**6. Repairs and equipment**

Since September 17th I have been giving my attention to the repairing of the Academy building. A gift was deposited to the credit of the Academy amounting to \$2200.00 Mex—and we were instructed by the Chairman of the Academy Board of Managers to use out of this amount whatever was necessary for getting the building in good working shape. The total estimate of the contractors for overhauling the building came to \$979.15. By the time

the building premises and furniture are in shape it will probably require in the neighborhood of \$1200, leaving us a balance of \$1000 out of this gift for other purposes. The repairing is nicely under way and all will be in order in plenty of time before the school opens, in February. Another improvement will be the lighting of the school by electricity. It will cost \$270 for installation but it will be well worth it, because the danger from fire will be greatly minimized and it will be cheaper and more satisfactory in every way than the using of oil for lighting.

#### 7. Money

The cost per year for running the school is estimated at \$7000. The finance committee is providing \$1600 of this amount while the remaining \$5400 must be raised from student's fees or otherwise.

Out of the \$2200 gift we expect to have a credit balance of \$1000. Besides we have been greatly favored with a gift of \$1111.11 from His Excellency the late Military Governor Li Shun, for which we are deeply grateful.

#### Estimated receipts and expenses for 1921

<i>Receipts</i>	<i>Expenses</i>
\$2200.00	
1111.11	\$1200.00
	7000.00
1600.00	\$8200.00
5400.00	Cr. balance 2111.11
<u>10311.11</u>	<u>10311.11</u>

#### 8. Personnel

I think we have reason for being optimistic about the future of this school. One big reason is the arrival of Miss Abbie Probasco. Miss Probasco is splendidly qualified, having had four years experience in High School administration and teaching at home. Her coming right at the reopening of the school has certainly encouraged us in the prospects of making

the Academy as good as the best in its educational standards. This year, of course, Miss Probasco will give all of her time to Language study.

Also Mrs. James has kindly consented to help out in the English department. Her membership in the faculty will be a great asset to the school in every way.

We are hoping much from the student pastor, Mr. Shen—who has recently graduated from the seminary and who has been preaching at the school chapel during the summer months and this fall. His experience with men while an officer in the Chinese Army, his sympathetic personality and zeal in wanting others to know Christ encourage us in the hope—that the Academy shall be pervaded with a strong, sound evangelistic atmosphere.

#### Chinese teachers

None have, as yet, been secured. But we realize the importance of securing teachers of qualified educational training and more essential still, teachers who will be aggressive Christian men whose influence in the Academy will accord with the aims of the school.

### 9. Conference Academy School System

We understand it is the policy of the Conference to have three Methodist High Schools located at Ningkwofu, Hochow and Nanking. Each of these Middle Schools will, I take it, have its own system of Lower and Higher Primary schools, so it will be necessary for the Conference to assign to the Academy a system of Lower and Higher Primary schools as feeders for the Academy and directly under its jurisdiction.

Our Lower and Higher Primary schools may do the same grade of work as the same grade schools of the other two Conference Middle School systems. But the Academy should, we believe, give a fully accredited English course, with its standards in every respect equal to the standards of the University Middle School. For we strongly believe that students who graduate from the Academy should have as good an education as students from the best grade Middle Schools in China. The calling of a minister or a teacher

requires as complete knowledge as any other if our church is to have an effective influence and be held in high respect by the people.

There will be three sources from which our students must come: (a) Our conference Academy school system, (b) from chosen students from government schools and (c) from among selected students of the other two conference Middle School systems. That is, those students who give special promise of developing into worthy ministers and teachers.

You are aware of the special purpose for which this Academy was founded. We have been entrusted with the responsibility of trying to carry out that purpose. More than ever since we have launched into it we realize that these aims cannot be accomplished without the ever present guidance of God and the cooperation of the whole Conference. This request we make together with your prayers that the Academy may be successful in fulfilling the aims for which it has been established.

Respectfully submitted,

JOHN A. LEWIS.

### **Report of Wan Nan Academy**

*TUNG YUIN-SENG, Principal*

As reported last year, Wan Nan Academy began with the founding of the Mission station in Ningkno-fu in the spring of 1914. The writer of this report started the school with only 18 students in the Lower Primary which was then called Chu Tsai School. The second year, 1915, with only 46 students we added a Higher Primary following the schedule of studies as approved by the National Board of Education. In 1917 a Middle School was opened, and instead of the name Chu Tsai School we changed it into Wan Nan Academy which comprises a four years' course with several studies of the fourth year arranged like the courses in Junior College in other institutions. Being limited by the place, we removed, the same year the Lower Primary to a separate place not far from the Middle School.

This fall, being the end of the fourth year since opening the Middle School, there will be the first Commencement of the graduating class of six students. Two graduates have decided to enter the Seminary at Nanking, two will enter College, one will specialize in physical education and the other will remain to teach in the mother school. The total enrollment this year comprises 32 in Lower Primary, 42 in Higher Primary and 77 in Middle School, a total number of 151 students. They come from 35 districts of four provinces—Shantung, Hupeh, Kiang-an, and Anhwei. The total fee from tuition, board and incidentals is \$2685.00 which was greater than that of last year by \$300.00. Among the students there are altogether 83 church members of which 54 are enquirers. There are 90 boarding students.

With the rapid increase of the students, the teaching staff has increased also. This term we have 15 teachers besides officers and several student teachers. Among the teachers 3 hold the B. A., degree 2 B. D., degree and 1 the B. S. degree. Three of the Chinese teachers are Siu Tsai and one is Chu Ren, equivalent to M. A. The diagram on the next page shows very clearly the progress made in these seven years.

With regard to the student activities, the students are working in the school Y. M. C. A., which is recognized by National Y. M. C. A. at Shanghai, Peoples' School and Sunday Schools for outsiders. Two representatives were elected to attend the big Y. M. C. A. Convention at Tientsin this spring and they won a very good name for their mother school.

In order to enlarge the range of our studies in different sciences, equipment for Chemistry, Biology, Physical Geography and General Science were provided. The total costs amount to \$1000.00 approximately. We shall procure equipment for physics amounting to \$400 next term, provided the money on next year's budget is available. We provided again, this summer, a library with 138 English books and 649 Chinese books, making a total number of 787 books beside one thousand and more pamphlets and periodicals. Fifty percent of the English books and 15% of the Chinese books are reference books. In the reading room we have

some 24 kinds of different periodicals in both English and Chinese.

We have made recently an application to the East China Accrediting Committee asking to be accredited. Although we have not yet received their reply, we hope the answer is favorable.

Before concluding my report I beg to make an urgent entreaty for the school. The present school site is awfully small for even the present use. The houses are modified and remodified and not a single room is left vacant. We ask for nothing but buildings for the Middle School. We have already a very big piece of land with a piece just newly bought, making a total estimate of about 30 acres (Chinese). Our only hope is for buildings. With the visiting of Rev. H. C. Steinheimer and Rev. Cheo Chia-yung to Ning Kuo-fu early this month, October, we are glad that from their investigations, they agree with us in our request. We hope, with their help, the works will soon begin.

### **Report of The Wuhu General Hospital, Wuhu China**

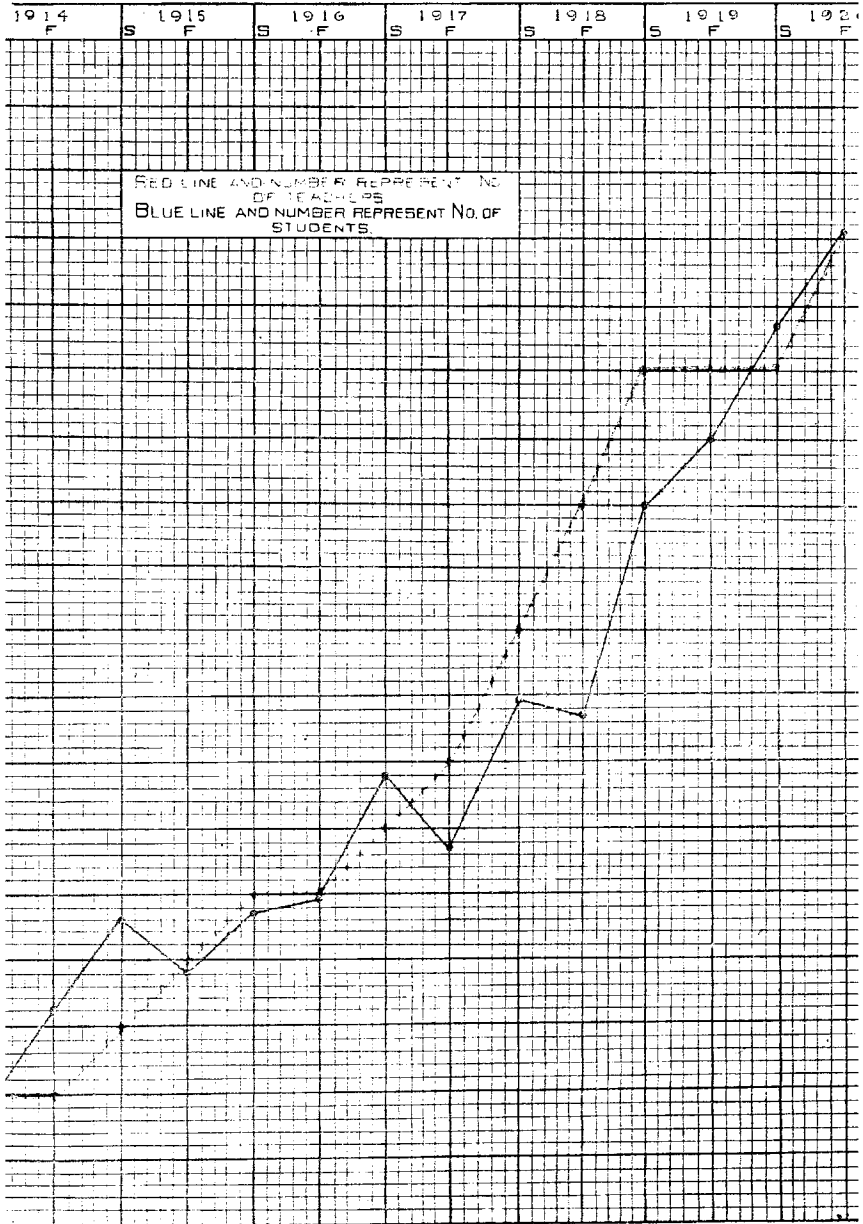
Through the sad death of Miss Murdock not only the medical work of the hospital suffered but we all felt keenly the loss of a beloved fellow worker. But the presence of Misses Craue and Keller in the language school and the optimistic letters from Dr. Gaunt telling of other new recruits and material aid made us all feel that better times were ahead.

Dr. Libby and the writer spent many happy hours planning changes which we felt would make our present and future plants more effective in proclaiming the gospel to our constituency. We have taken as our motto "Our patients are our guests," led to us by the spirit of God and the responsibility is ours to determine the impression these guests will receive of the Christian church and the religion of our Master.

Even though the hospital has been open nearly 40 years we have patients who have never seen a foreigner before. This is because many of our patients come 2 and 3 days travel to reach the hospital.

# WAN NAN ACADEMY.

DIAGRAM TO SHOW THE PROGRESS IN THESE SEVEN YEARS FROM BEGIN





Pastor Tseo has been very faithful in working out plans for bringing the gospel to the patients and in following them to their home towns with letters of introduction to pastors. That we might get our bed patients in touch with our worship the daily chapel service has been held in the wards three times a week. This along with picture charts and printed songs on the walls and the personal work of the pastor has helped to make more evident the purpose of the hospital.

One of the encouraging events of the year came in the opportunity to serve during this summer's Cholera epidemic. The police officials and the Chinese Red Cross asked us to take charge of a special hospital for Cholera patients. An ideal place was secured in a large tea house on one of the beautiful islands. The Red Cross helped with funds and two representatives on the committee, the police provided workmen and two members on the committee, one of whom was an official who was converted in our hospital last year. Dr. Chung and the writer along with some of the hospital staff did the medical work. There were 250 patients treated during the month the hospital was open. At the close of the work the officials invited us to a feast and had a group picture taken with the Chinese, American and Red Cross flags as a back ground. Even though it made our work very heavy we rejoiced in the privilege of becoming acquainted with these men and working with them and we trust the Lord will open their hearts to receive the true motive that should prompt all Christian service.

We are glad to acknowledge special gifts of 24 cases of supplies from the American Red Cross; several cases of supplies and instruments from the foreign customs and a \$100.00 gift from the family of General Ma because of services rendered to his family. We greatly appreciate the friendship represented by these gifts.

We look to the future with thankful hearts for the privilege of service and our chief desire is that with the new plant and increased staff there will also come an increased spiritual life in all phases of the work and that it may more nearly fulfill all the requirements of a true Christian institution.

ROBT E. BROWN.

**The Wuhu General, Hospital, Wuhu China****Report to the Central China Conference, Oct. 27, 1920**

Our hospital at Wuhu is in the process of re-construction during which time, we are confronted with two great tasks. First, the assembling of a group of earnest missionaries, who not only are loyal and unshaken in their faith in Christ, but are also well trained specialists in their respective professions. The second task is the securing of funds and the building of a new hospital.

Our present foreign staff consists of: Dr. Libby, who is now on furlough, specializing at John's Hopkins in Internal Medicine.

Dr. Brown, who has been at Wuhu for the past year is well equipped to direct our work in Public Health, as he has received in addition to his degree in medicine the degree of D.P.H.

Miss Lydia Keller and Miss Marietta Crane, two exceptionally well trained nurses were in the language school last year, and are starting into active hospital work this fall. Their presence among us is particularly appreciated as our hospital has been without a foreign nurse since the death of Miss Murdock.

Dr. Gaunt has just returned from America where he took two years graduate work in surgery at the Mayo Clinic and the Massachusetts General Hospital.

We gladly welcome the new foreign additions to our staff!

Prof. Chas. O. Lee this year resigned a full professorship in Purdue University to take charge of our department of Pharmacy. He is studying the language at present in Nanking.

Miss Lillian Cookson comes to us from the Mayo Clinic, where she was a graduate nurse in the Stanley Hospital. She has also had special training in public health demonstration work under the auspices of the Red Cross in America which fits her for organizing a similar work in China. Miss Cookson is now in the Language School in Nanking.

Miss Sarah E. Redmond is due to arrive this week from America where she has been for the past four or more years in

charge of the records in the Childrens' Hospital, Boston. She has had special training in stenography and secretarial work which prepares her to efficiently organize our hospital records, indexes and other secretarial work. She will probably enter the second term of the language school.

Dr. Chung is our only Chinese doctor with us at present. He has been a faithful worker in the church and hospital for many years, and we trust he may work with us many years more in our new hospital.

Dr. Wang who is just completing medical work at Tsinanfu and who also will bring his experience as a pastor will be a valuable worker.

Mr. B. K. Chen has joined our staff and expects to sail from America in the spring. He graduated in Pharmacy in Valpariso, Indiana, and has had a large business experience in America. He is at present studying X-ray technique at the Massachusetts General Hospital, Boston, Massachusetts. Mr. Chen will have charge of our X-ray Department and will assist Prof. Lee in the department of Pharmacy.

The new building plans are largely completed, and somewhat over nine-tenths of the cost of the new buildings has been secured. Our great need now in this respect is for a construction engineer to enable us to start building immediately. Our building program will probably not be more than well begun by next conference.

To care for the children of the hospital employees and of the near vicinity we are organizing a new school for boys and girls. The employees of the Ralston-Purina Co. St. Louis, Mo. (where Dr. Gaunt was formerly employed) have taken an unusual interest in this school and secured among themselves scholarships to cover the expenses, more than 28 scholarships at \$10.00 each have been paid for and we are expecting more. They have adopted our school.

Dr. Brown will read his special report in connection with this general survey.

F. P. GAUNT, Supt.

**Central China Woman's Foreign Missionary Society**

The Woman's Foreign Missionary Society in Central China has 27 members sent out from America, of whom eleven are in educational work, six in evangelistic work, two in medical work, five in Language School, and two on furloughs.

We have a total of 24 Bible Women and forty women teachers apart from the Boarding Schools.

In our Field work we have two kindergartens, one of which was opened during the past year in Chinkiang under a graduate from the Soochow Kindergarten School.

Besides these kindergartens, we have twenty-seven girls or co-ed day schools. In one of these schools on the Chinkiang District at Shan Tang, half of the pupils are boys and half are girls, thus following the direction of our East Asia Conference that our lower primary work should be co-educational. Probably every school has some boys. In these schools, we have a total of 870 pupils. From them thirty-four have graduated this year, one of whom was a boy, the first in all our girls schools to complete the Su Wan examinations.

During Miss Kesler's time of Conference Supervision of Day Schools, she put strong emphasis on the spiritual side of the work, especially the employment of Christian teachers. This year for the first time a Board was constituted for the employment of women teachers. Various plans were made for greater efficiency of the schools in the future, among which were the following:

1. Plan for Chinese Normal trained worker to be associated with Missionary supervisor.
2. Local Institutes for teachers (One held in Wuhu, April, 1920).
3. Community Welfare Institutes-cultivate cooperation of constituency in market towns and other rural centers.
4. Increased cooperation with editor of Teachers' Bulletin, published by the Su Wan Board.
5. Closer linking of existing boarding schools with day schools.

The Chinkiang Girls' Boarding School has been highly favored this year in having Miss Thorens to teach music. When many other students were failing in the Ginling College entrance examinations, two of the graduates of this school took them and passed. Seven girls graduated from the school this year. The school has received more than \$2700 in self-support this year besides \$2500 given by the gentry towards a new administration building. The need of more room is urgent and we hope the building may be built this year.

The Nanking Methodist Girls' High School has 140 students of whom 75% or 105 are Christians, and 93 are from our Methodist Girls' Day Schools. Half of the school's support is received locally. The students are active in Christian work, about forty are teaching in Sunday schools. The church collections were \$87.45, an increase of \$32.72 over last year. In addition to this the students have given liberally to the Yunnan work and to the Famine Fund, making a total of \$211.20 raised during the year.

A boarding school for Wuhu has long been planned. Now our hopes seem about to be realized, as we expect the school to be opened during the coming year.

Hitt Training School has an average enrollment of 69 pupils, an increase in the number of pupils preparing to do Bible Woman's work, an increase in self-support so that practically all the living expenses are paid through local funds. Thirty-three students are now in active Christian work.

Miss Frances Battey was nurse in charge of the Memorial Hospital until last July, when Miss Hynds returned and Miss Battey took her furlough. The hospital has continued to be a blessing to the foreign community of Nanking and the surrounding country. Eighty-one patients have been treated during the year.

The administration building of the Union Bible Teachers' Training School is now being erected and the Chinese are planning to secure funds for a dormitory. The school has an enrollment of 43, representing ten provinces and fifteen denominations. We are glad to report that 10 of

these pupils are Methodists, and seven out of ten are taking the course that requires high school graduation for entrance.

Ginling College has 55 students. During the six years since the college opened, the students have come from 28 high schools. An exchange of teachers has been made this year between Ginling and the Methodist Girls' High School with mutual profit. The students have been active along the lines of evangelism and social service, as follows:

In conducting a neighboring day school.

" " " " " Sunday "

In Sunday Schools in various churches.

Mother's Meetings.

House to house visitation.

Night school for servants.

Apart from the evangelistic efforts in connection with these schools, we have had both regular and special efforts in behalf of women and children.

All the Bible Women have conducted weekly meetings for women and children.

Sunday School work for street children forms an important part of our evangelistic program.

Two afternoon schools have been opened for women. Gospel literature constitutes an important part of the curriculum of these schools. The total enrollment is 16. The school where tuition is charged has been particularly prosperous and we propose that the other school shall be made a pay school next term.

Especial mention should be made of the work of Mrs. Gulston, Mrs. Chi, and Mrs. Gong at Ku I Lan during the year. Twenty-five women were baptized in connection with their work and the spiritual life of many was built up. In other places women have been added to the church, also a goodly number of girls from the girls' day schools.

Special evangelistic efforts were made in many of our churches at China New Years, and at other times meetings have been held in the interest of public health, Christian citizenship, social intercourse and evangelism.

Wuhu is the banner district for W. F. M. S. auxiliaries. It has five which raised a total of \$50 this year. Nanking district has two societies. The one at Ku I Lan has a membership of 124 and total receipts of \$53.

The Bible Woman's Institute held in Wuhu in the early summer was one of the most helpful parts of the year's work. Almost all the Bible Women of the Conference were present and church members from our own and other churches participated in the truly instructive and inspirational work of the Institute.

We rejoice greatly that the Chinkiang Hospital which has been closed for four years is again open and Dr. Robbins and Miss Sayles are with us for that work.

The Woman's Messenger (Nu Do Pao) has continued its effective work. Special emphasis has been put on temperance this year. Miss White and her staff have translated music and a pageant, also several books such as Quo Vadis, The Secret Garden, Life of Mary Slessor, and the Life of Alice Freeman Palmer. Some of these are already published and some are awaiting funds. The crowning book of the year is Miss White's History of Woman's Social Progress on which she has been working for eight years.

EDITH M. CRANE.

### **Report from the China Centenary Movement**

The clear intent of the Directing Committee of the China Centenary Movement at its meeting held in Peking in Feb. 1920 was that Dr. Ralph A. Ward should continue to act as executive secretary of this movement. But, in the providence of God, it has become necessary for Dr. Ward to remain in America, where he is now acting as associate secretary for the Board of Foreign Missions. And, by act of the Directing Committee, I am now trying to carry the work that Dr. Ward has necessarily laid down.

In order to accept the executive secretaryship of this movement it became necessary for me to relinquish the responsibilities of various other positions. It thus happens that while I am still officially general editor of our Methodist

publications, Secretary of the Epworth League and acting manager of the Methodist Publishing House, practically all my time is being given to the work of the Centenary.

Our central organization is not a body to impose any program from without, but an agency of the seven conferences themselves, meant to coordinate their efforts in achieving the goals which, in the main, are the same in each case. These goals may be summarized as follows :

I. Advance in the Church.

1. Through the promotion of intercession to a praying, spiritually powerful congregation.

2. Through the promotion of stewardship to the securing of a body of Christians who devote their time, their possessions, and their lives to the service of their Master.

3. Through the promotion of literacy until every church member is able to go straight to the source of spiritual strength that is to be found in the Bible, and from it to obtain at first hand the leading of God to a life of power.

II. Advance in the Community.

1. Through the erection of additional primary schools and the bringing of all our schools to the highest standards of efficiency.

2. Through the securing of equal efficiency in all our medical work.

3. Through great campaigns of evangelism, which recognize in the winning of men and women to Jesus Christ the supreme contribution which we as Christians can make to the upbuilding of China.

The central office of the Centenary is organized to do what is possible in helping all the conferences to go forward together to these goals. To this end a large amount of varied literature and advertising material is being placed at the disposal of the conferences; stereopticon outfits and lectures are being secured and will be distributed as rapidly as they can be used effectively; plans are in the making for the presence in the conferences of all the bishops for the purpose of lending inspiration to the progress of the movement; Dr. Harvey Reeves Calkins will spend the year bringing the experience of his long leadership to the study of the question



of stewardship in each conference; and Dr. Chen Wei Ping will lead in a campaign of constructive evangelism in many parts of our church, among which Central China will be included.

May I, on behalf of the Centenary organization, ask the Conference before its adjournment to perfect the local organization in order that we may the more easily gear up the work in our central office to that in the conference.

The support which has been so generously given me by all during these months has been very deeply appreciated. I can only trust that the work of the coming months may be so carried on that your support may continue. And if we seem to be forfeiting our claim for your support, then I pray that you will deal with us patiently, and by the ardor of your efforts bring us back on the path toward our goal.

PAUL HUTCHINSON.

### **The Report of the Sunday School Committee**

The aim of the Sunday School instruction is to give to Christians an education in morality which is fundamental for all real future progress. If the Sunday School of each district should emphasize this important fact the progress of the Church in the future will be glorious.

The following are seven things suggested to be carried out in each Sunday School.

- (1) The pastor of each circuit should speak once in a year on the importance of the Sunday School.
- (2) Every week there should be a normal class.
- (3) Sunday School teachers should be properly selected.
- (4) There are three things of which the Sunday School teachers should take notice.
  - a. Assign students into different grades.
  - b. Teach the class with the right method of instruction.
  - c. Select the right kind of material.
- (5) In each class there should be not more than seven students.

- (6) The extension of Sunday School work of each district in
- The Sunday School of local Church.
  - the Sunday Schools of other Churches.
  - The Sunday Schools of the Vicinity.
- (7) There should be frequent meetings of the Sunday School to discuss ways and means so as to encourage the Sunday School workers to face future work with confidence and courage.

#### Sunday School Committee

Li Yu-yung, <i>Chairman</i>	Chen Hsi-shen
T'u Kwan-tou	L. L. Hale
A. W. Martin	Yang Wan-chung.

### CONFERENCE TREASURER'S REPORT

H. F. ROWE *Treasurer*

	Home Missions	Episcopal Fund	Foreign Missions	Annuity Fund	General Conference
Shueiyang . . . . .	\$ 5.00	\$ 1.00	\$ 1.00	\$ 1.00	\$ . . . . .
Chinkiang . . . . .	40.00	3.00	5.00	8.00	2.00
Nanking . . . . .	18.00	3.00	2.00	5.00	5.00
Kiangtangkiai . . . . .	100.00	6.00	25.00	10.00	. . . . .
Kuilan . . . . .	2.00	. . . . .	1.00	. . . . .	. . . . .
South Gate . . . . .	1.00	1.00	1.00	2.00	2.00
P'ukiatsih . . . . .	10.00	1.00	1.00	. . . . .	3.00
Siaotanyang . . . . .	5.00	2.00	2.00	. . . . .	2.00
Sip'u . . . . .	4.00	1.00	2.00	1.00	. . . . .
Hochou . . . . .	45.00	3.00	5.00	3.00	1.00
Ningkwofu . . . . .	3.00	1.00	1.00	1.00	. . . . .
Kwangchi . . . . .	3.00	2.00	2.00	1.00	. . . . .
T'aipingfu . . . . .	2.00	1.00	2.00	1.00	. . . . .
Tikanchen . . . . .	14.00	3.00	3.00	3.00	2.00
Wuhu: Second Street . . . . .	9.00	3.00	3.00	3.00	2.00
Ichishan . . . . .	2.00	4.00	. . . . .	. . . . .	. . . . .
Kiangling chen . . . . .	11.00	2.00	1.00	2.00	. . . . .
Yuintsao . . . . .	5.00	2.00	5.00	1.00	. . . . .
Wannan . . . . .					
	\$280.00	\$ 40.00	\$ 61.00	\$ 42.00	\$ 19.00

**Annuity Fund Treasurer's Report**H. F. ROWE, *Treasurer.***RECEIPTS**

Balance from 1919.....	\$4,439.10	
From the Methodist Connectional fund....	146.00	
Interest to date.....	80.00	
Conference collection.....	42.00	\$4,707.10

**EXPENDITURES**

Grant to Mrs. Tung .....	\$120.00	
Due General Connectional fund .....	20.00	\$ 140.00
		<hr/>
Total in hand at Conference time 1920 .....		\$4,567.10
Gold deposit .....	\$619.59	
Interest .....	43.37	
Book Concern Draft 1920.....	264.00	\$ 926.96

**Home Missionary Society Treasurer's Report**H. F. ROWE, *Treasurer.*

Balance in hand at close of Conference 1919	\$378.84	
Appropriated for the year 1919-1920.....	279.00	
Balance.....	\$	99.84
Conference collections 1920.....		280.00
		<hr/>
Total in hand Conference 1920.....	\$	379.84

**Appropriations for 1920-1921**

These amounts have not been paid out

Wuhu: Second Street.....	\$ 24.00
Chinkiang.....	60.00
Tanyang Hsien.....	20.00
Yaopu.....	30.00
Ningkwo.....	96.00
Siaotanyang.....	24.00
Yuintsao.....	24.00
Kiangning.....	20.00
Pukiatsi.....	25.00
	<hr/>
	\$323.00

### **Report of Committee on State of the Church**

We have cause for great thanksgiving because the Church during the past year has been alive and progressive.

Formerly we exhorted men to believe the Gospel. Now our labor is to inspire men to live the Gospel.

Although we believe the Church to be making more real progress than in former years when we consider the magnitude of the task before us we realize the need of striving for greater and still greater results.

#### **FIRST:**

We suggest, therefore, that our greater emphasis be placed on the SPIRITUAL LIFE.

We are seeking not for an earthly but for a heavenly kingdom.

Our only hope is in promoting among our members a feeling of deepest reverence for the things of the Spirit.

We have no occasion for anxiety on account of a small membership if it be truly spiritual.

The way of spiritual life is the way of sacrificial service.

Jesus said, "I came not to be ministered unto but to minister and to give my life a ransom for many."

It is the work of the pastor by the example of his life and love to unite his members in the love of Jesus and the service of humanity.

#### **SECOND:**

Our love for Christ is evidenced by the free giving of our substance and service.

We have cause for thanksgiving because our collections this year, although not large, have in every case exceeded the estimated advance. We should avoid, however, any feeling of satisfaction on this account and strive for even greater results along this line in the year before us, lest, by relaxing our efforts, ground be actually lost at this point:

Instead of bending our efforts to obtaining larger sums from outside sources let us struggle to bring nearer the day when all of our work becomes fully self-supporting.

To this end we should earnestly advocate tithing as the scriptural method and the only worthy ideal of giving.

It is most important, also, that every member become a personal worker and that everyone be given as large a share of responsibilities in the Church as he is able to carry.

These ideals, trusting in human strength, are truly impossible of attainment. We find, moreover, that Jesus is present, with all sufficient powers, only when we are doing our human best.

### THIRD:

The third place for special emphasis is in work with the children. Every effort should be made to increase the amount and to improve the quality of our educational work both in day and Sunday schools.

### Report of the Committee on Temperance

The purpose of this committee is to promote purity of heart and self-control of body and mind. This is needed by every human being, but especially by Christians. In order to gain efficiency in the practice of self-control we must put our energy into it and organize ourselves into a temperance association. The committee, therefore, suggest the following:

(1) The committee on temperance is the executive organ of the temperance association of the Central China Conference.

(2) The aim is to forbid smoking, drinking, impurity, gambling, luxuries, self-indulgence, foot-binding and all sorts of immoral conduct.

(3) Every district in this Conference should establish a branch association of which the District Superintendent is ex-officio chairman.

(4) The members of the committee aim to go to every church in the various districts in order to lecture on temperance and to establish the association.

(5) In every church sermons on temperance should be given in the Sunday services at least once a year.

(6) Every district superintendent should report the work and the methods used before the time of the annual Conference in order that the executive committee may gather together all the reports for the information of the Conference.

(7) The following topics should be considered by every pastor: (1) The importance of the Temperance Association. (2) Disadvantages of intemperance. (3) Methods of organizing and managing temperance associations.

### **Report of the Committee on Resolutions**

Resolved that we express to Bishop Birney our deep appreciation of his wise and sympathetic administration of our Conference affairs and the pleasure the arrival of himself and Mrs. Birney to China is giving us. We pray for God's blessing and guidance upon them as they enter upon their service of the Church in China.

Resolved that we express to all the new missionaries a cordial welcome to the work of our church in this great but needy land. We feel that under God's guidance and the inspiration of these fellow workers we shall carry on with renewed consecration and energy the great work that is set before us.

Resolved that we express to Bishop S. D. Chown, Dr. F. L. Brown, Dr. Frank Gamewell, Mr. P. L. Gillett, Rev. Paul Hutchinson, Rev. W. C. Longden, Miss Geraldine Townsend and all other speakers our sincere appreciation for the service they so generously rendered to the success of the Conference.

Resolved that we express to our beloved fellow workers, Dr. R. C. Beebe and Rev. Chang Yung Hsuin our love and good wishes. We regret that they have been unable to be present with us to counsel and to guide, and we assure them of our prayers that their years of service to the Church may be lengthened and as richly blessed as in the past.

Resolved that we express our deep regret that Rev. Li Yuin Shen, who has given thirty years of faithful service to the Church now feels that on account of his advanced age

and ill health he must retire from active service. May God's richest blessing abide with him during the remaining years of his service.

Resolved that we express to Rev. and Mrs. W. C. Longden our sincere gratitude upon their return to China. We heartily welcome them again into the fellowship of our common work for the cause of Christ.

Understanding that Rev. J. R. Trindle is purposing to retire from the active work of the mission: Resolved that we feel deep regret at this action. Because of his strong evangelistic fervor, his sacrificial toil, his great resourcefulness, and his spirit of good fellowship with his associates, foreign and Chinese, he has endeared himself to us and commands our confidence. If indeed Brother and Mrs. Trindle feel that they must withdraw from this fellowship of service even temporarily we can but bid them God speed in their new field. May grace be given for all their needs and their influence for Christ's kingdom continue strong.

Resolved that we express our appreciation for the gift by the late Tchuin Li Shun of \$1111.11 to each of four schools of our Conference. We cannot but regard this generous gift as an evidence of the growing influence of the Church in the life of the individual and the nation.

Resolved that we, the visiting delegates to the Central China Conference, express to our Nanking hosts and hostesses our sincere appreciation of the cordial manner in which they have entertained us.

## **COURSE OF STUDY**

---

### **COURSE OF STUDY FOR MISSIONARIES**

The Central China Mission has voted to recognize the course of study of the Department of Missionary Training of the University of Nanking.

The first year's work must be taken at Nanking. The second year's work may be taken there, and the balance of the work is to be carried on at the Station to which the Missionary is appointed.

For a full description of the course address

REV. CHAS. S. KEEN, Nanking.

---

### **COURSE OF STUDY FOR TRAVELING PREACHERS**

All the candidates for examination must present themselves at the seat of Conference on the Saturday previous to the date fixed for the assembling of the Annual Conference. The three week days intervening are devoted to examinations. Those failing to appear at the time fixed for any examination fail in that examination for the year. No candidate is permitted to take his examination in the interval between Annual Conferences. Those who, on account of sickness or for other valid reason, are allowed to take a special examination, do so only at the convenience of the Examiner.

Written sermons must be sent by post, or otherwise delivered, to the proper examiner at least one month before the date fixed for the assembling of the Annual Conference.

In the preparation of written sermons, a text should be chosen, the outlines of a sermon developed, and the points concisely argued or illustrated. Essays on religious topics will not be accepted as sermons.

Candidates taking examinations in which the Chinese character is used are to use only clean, ruled, Chinese paper; to write with Chinese pen and ink; and to employ "clear" characters only. Written sermons are also subject to this rule.

*(Course adopted by Board of Bishops for Chinese Preachers)*



# COURSE OF STUDY FOR CHINESE PREACHERS

Recommended by the Central Conference of China, Nov. 1911  
and Adopted by the Board of Bishops

## I. Course of Study for Traveling Preachers

### ADMISSION ON TRIAL

- 1 Genesis and Exodus, \*E. James
- 2 Matthew, Mark, Luke, Tsü Yü-ho
- 3 The Discipline, Parts I and II. H. F. Rowe.
- 4 Complete Geography, By H. L. Zia, first half. Tung Yuig-seng.
- 5 Martin's Evidences of Christianity. Chang Yung-hsuin.
- 6 Written Sermon. Li Chuen-fan.
- 7 Thorough preparation in the Course in Romanized prescribed for Exhorters.

### TO BE READ

(Li Ch'uen-fan.)

- 1 Mrs. Sites' Life of Wesley.
- 2 Philosophy of the Plan of Salvation translated by W. M. Hayes.
- 3 History of the Jews from Cyrus to Titus.
- 4 Gulick's Health Lectures, translated by H. R. Caldwell.
- 5 Myers' General History, first half.

## I. 試用出門傳道者之課程

### 求進試用者

- 1 創世記。出埃及記
- 2 馬太。馬可。路加
- 3 教會例文卷一卷二
- 4 地理瀛寰全志上半
- 5 天道溯原 丁隴良著
- 6 作傳道論一篇
- 7 爲勸士所定之羅馬字課程  
須預備透徹

### 熟閱之書

- 1 衛斯理傳 薛師母
- 2 救世零說
- 3 新舊約接續史
- 4 衛生淺說
- 5 邁爾通史上半

\*These are the names of the examiners in each subject.

## FIRST YEAR

- 1 Leviticus, Numbers, Deuteronomy. Chou Kia-yung.
- 2 Acts; I and II Peter. A. J. Bowen.
- 3 The Discipline, Part III. H. F. Rowe.
- 4 Complete Geog. by H. L. Zia, second half. Tung Yün-seng.
- 5 Ohlinger's Homiletics, first half. Li Ch'uen-fan.
- 6 On Civilization, first half. Tsü Yü-ho.
- 7 Written Sermon. Chang Yung-hsueh

## TO BE READ

(Chou Kia-yung.)

- 1 Wesley's Sermons.
- 2 Richard's Protestant Missionary Pioneers.
- 3 Autobiography of Rev. Hu Iong Mi.
- 4 Myers' General History, second half.

## SECOND YEAR

- 1 Joshua; I. and II. Samuel. E. James.
- 3 John, Romans. A. J. Bowen.
- 2 Discipline, Parts IV. and V. H. F. Rowe.
- 4 Ohlinger's Homiletics, completed. Li Chuen-fan.
- 5 On Civilization, second half. Tsü Yü-ho.
- 6 Sheldon's Essentials of Christianity. Chang Yung-hsueh.
- 7 Written Sermon. Tsü Yü-ho.

## 第一年

- 1 利未記民數記申命記
- 2 彼得前後書使徒行傳
- 3 教會例文卷三
- 4 新理瀛寰全志下半
- 5 傳道之法上卷武林吉譯
- 6 進化論上半
- 7 作傳道論一篇

## 熟閱之書

- 1 爲斯理詳訓
- 2 近代教士列傳 李提摩太著
- 3 信效錄 許揚美著
- 4 邁爾通史下半

## 第二年

- 1 約書亞撒母耳前後
- 2 約翰福音羅馬
- 3 教會例文卷四五
- 4 傳道之法下卷 武林吉
- 5 進化論下半
- 6 聖教總論
- 7 作傳道論一篇

## TO BE READ

Tung Yuin-seng.

- 1 Life of Christ, Vols. I. II. III.
- 2 Williamson's Comparative Religions.
- 3 Richard's Benefits of Christianity.
- 4 History of Religious Progress.

## THIRD YEAR

- 1 I. and II. Kings, Proverbs, Ecclesiastes. Chou Kia-yung.
- 2 I Corinthians to Colossians inclusive. E. James.
- 3 Discipline, Part VI. Tung Yuin-seng.
- 4 Church History, Part I. by Dr. H. Corbett. H. F. Rowe.
- 5 Ohlinger's Pastoral Theology, first half. Li Ch'uen-fan.
- 6 Martin's Psychology. A. J. Bowen.
- 7 Written Sermon. Chang Yung-hsun.

## TO BE READ

Tsü Yü-ho.

- 1 Selby's Life of Christ, Vols. IV V. VI.
- 2 A Leaf of the Bible; Bettex.
- 3 Evolution: its ways and by-ways.
- 4 The Teachings of Mihcius,

## FOURTH YEAR

- 1 Isaiah, Daniel, Job. E. James.
- 2 I. and II. Timothy, Hebrews. Chou Kia-yung.
- 3 Discipline, Part VII. A. J. Bowen.

## 熟閱之書

- 1 耶穌事蹟考卷一二三  
師多馬著

- 2 古教彙參

- 3 救世教益

- 4 宗教進步歷史

## 第三年

- 1 列王記上下箴言傳道

- 2 自哥林多前至哥羅西

- 3 教會例文卷六

- 4 聖會史記上半

- 5 牧師之法卷上武林吉譯

- 6 性學舉隅

- 7 作傳道論一篇

## 熟閱之書

- 1 耶穌事蹟攷卷四五六  
師多馬著

- 2 柏特造物論

- 3 天演學正詮

- 4 耶墨衡論

## 第四年

- 1 以賽亞但以理約百記

- 2 提摩太前後書希伯來書

- 3 教會例文卷七

- 4 The Making of a Man, Lee. Tsü Yü-ho.
- 5 Mental Philosophy, translated by Yen Tung Yün-seng.
- 6 Church History, Part II by Dr. H. Corbett. H. F. Rowe.
- 7 Ohlinger's Pastoral Theology, completed. Li Ch'uen-fan.
- 8 Written Sermon. Li Ch'uen-fan.

## TO BE READ

Chang Yung-hsuei.

- 1 Selby's Life of Christ, Vols. VII, VIII, IX.
- 2 The Conflict of Christianity and Heathenism, Ohlinger.
- 3 Discovered Truths Compiled by Uong De Gi.

## II. Course of Study for Local Preachers

Candidates for Local Preacher's License must be examined on the entire course for Exhorters. Local Preachers must also be prepared on the Exhorter's Course in the Romanized as a condition of advancement or ordination.

## FIRST YEAR

- 1 Genesis, Exodus.
- 2 Acts.
- 3 The Discipline on the Annual Conference.
- 4 Graves' Geography of Palestine.

## MEMORIZE

- 1 Psalms, first and second.
- 2 Isaiah, 61st Chapter.
- 3 I Corinthians, 15:35-58.

## 4 人學

5 心靈學 顏永京譯

6 教會史記下半

7 牧師之法下卷武林吉譯

8 作傳道論一篇

## 熟閱之書

1 耶穌事蹟攷七八九

師多馬著

2 羅馬宗教激戰史

3 見道集 黃治基著

## II. 本處傳道者之課程

欲得本處傳道者之執照須考完勸士之課程而本處傳道者欲受接手禮必先考勸士所讀羅馬字之課程

## 第一年

- 1 創世記。出埃及記
- 2 使徒行傳
- 3 教會例文論年議會
- 4 猶太地理擇要 紀好彌著

## 熟背之書

- 1 詩篇第一二篇
- 2 以賽亞第六十一章
- 3 哥林多前書十五章三十五至五十八節

## TO BE READ

- 1 How to Win Souls, translated by Miss Ruth Sites.

## SECOND YEAR

- 1 Joshua, Judges, I. and II. Thessalonians.
- 2 Biblical History, Part I.
- 3 The Discipline on the Central and the General Conference.

## MEMORIZE

- 1 Genesis, 1st Chapter.
- 2 Matthew, 5th Chapter.

## TO BE READ

- 1 Du Bose's Catechism on the Three Religions.
- 2 Nevius' Manual for Preachers.

## THIRD YEAR

- 1 Job.
- 2 I. and II. Corinthians.
- 3 I. and II. Timothy.
- 4 The Discipline on a Preacher's Duties.
- 5 Biblical History, Part II.

## MEMORIZE

- 1 Psalm, 8th.
- 2 Matthew, 6th Chapter.

## TO BE READ

- 1 The Parables of Jesus Explained.
- 2 Who is Jesus? by Sia Sek Ong.

## FOURTH YEAR

- 1 Isaiah.
- 2 Galatians, Philippians, James.
- 3 Binney's Theological Compend, translated by J. W. Lambuth.

## 熟閱之書

- 1 相靈編 薛師母譯

## 第二年

- 1 約書亞士師記帖撒前後
- 2 聖經史記卷一
- 3 教會例文論合衆議會與總議會

## 熟背之書

- 1 創世記第一章
- 2 馬太第五章

## 熟閱之書

- 1 三教問答 杜步西
- 2 宣道指歸 倪維思著

## 第三年

- 1 約伯記
- 2 哥林多前後書
- 3 提摩太前後書
- 4 教會例文論傳道者之本份

- 5 聖經史記卷二

## 熟背之書

- 1 詩篇第八篇
- 2 馬太第六章

## 熟閱之書

- 1 耶穌譬喻零解 紀好弼著
- 2 耶穌是誰論 謝錫恩

## 第四年

- 1 以賽亞書
- 2 加拉太書腓力比書雅各書
- 3 天道總論 藍柏譯

- 4 The Discipline on Sunday Schools and Epworth Leagues.

#### MEMORIZE

- 1 Psalm, 90th  
2 John, 3rd Chapter

#### TO BE READ

- 1 The Three Important Things, Martin.  
2 Illustrations of Christian Truth.

#### FOR LOCAL ORDERS

Local Preachers who are Candidates for Deacon's orders must be re-examined on the entire course for Local Preachers, re-read the books prescribed to be read and do the work required in the Romanized.

Local Deacons seeking Elder's orders must pass the examination for admission on Trial and peruse the books required to be read up to the end of the second year of the course for Traveling Preachers, including the Life of Christ, complete.

### III. Course of Study for Exhorters

#### *Examination by District or Quarterly Conference*

- 1 The Miracles of Jesus.  
2 The General Rules.  
3 The Shorter Catechism.  
4 Read at sight selections from John's Gospel, Romanized or Mandarin.

- 4 教會例文論聖日學  
務德會

#### 熟背之書

- 1 詩篇第九十篇  
2 約翰福音第三章

#### 熟閱之書

- 1 三要錄 丁達良著  
2 安仁車

本處傳道者欲受接手禮  
本處傳道者須先復考本  
本處傳道四年之課程復閱  
本處傳道四年之書復讀  
所派之羅馬字方可受本  
處執事接手禮

本處執事須先考求進試  
用之書須留心閱出門傳  
道第一二年該閱之書而  
耶穌事蹟攷必須看完方  
可受本處長老接手禮

### III. 勸士之課程

#### 欲得勸士執照者應考之書

- 1 神蹟問答  
2 美會大綱總例  
3 依經問答  
4 讀羅馬字或官話約翰  
全本開卷即讀不准先閱

5 Foochow candidates must also be examined in the Romanized Primer.

NOTE. The work in Romanized is prescribed especially for the Foochow and Hing-hua Conferences.

#### MEMORIZE

- 1 The Apostle's Creed.
- 2 The Decalogue.

#### TO BE READ

- 1 Bunyan's Pilgrim's Progress, First half.

#### FIRST YEAR

- 1 Parables of Jesus.
- 2 The Discipline on Members and Exhorters.
- 3 Read at sight selections from the Four Gospels, Romanized.

#### MEMORIZE

- 1 Psalm, 23rd.
- 2 The Beatitudes.

#### TO BE READ

- 1 Pilgrim's Progress, last half.

#### SECOND YEAR

- 1 Mark.
- 2 The Bible Picture Book.
- 3 The Articles of Religion.
- 4 Pilcher's Primary Geography.
- 5 Read at sight and write from dictation selections from the Romanized or Mandarin New Testament.

#### MEMORIZE

- 1 Psalm, 91st.
- 2 Luke, 14th Chapter.

5 屬福州者須考羅馬字母書羅馬字特爲福州興化而定

#### 熟背之課

- 1 使徒信經
- 2 上帝十誡

#### 熟閱之書

- 1 天路歷程首卷

#### 第一年

- 1 耶穌譬喻解
- 2 教會例文論教友及勸士
- 3 讀羅馬字四福音開卷即讀不准先閱

#### 熟背之課

- 1 詩篇第二十三篇
- 2 八福

#### 熟閱之書

- 1 天路歷程末卷

#### 第二年

- 1 馬可福音
- 2 聖經圖說 薛師母譯
- 3 大綱廿五條
- 4 地理初階
- 5 或讀或默寫羅馬字新約全書開卷即讀或默寫不准先閱

#### 熟背之課

- 1 詩篇九十一篇
- 2 路加第十四章

## TO BE READ

- 1 The Gate of Virtue and Knowledge, Griffith John.

## THIRD YEAR

- 1 Luke; John; and the One Hundred Texts.
- 2 The Discipline on the Fourth Quarterly Conference.
- 3 The Larger Catechism with Illustrative Narratives, first half, translated by Ohlinger.
- 4 Read at sight and write from dictation from the Romanized newspaper or the equivalent in Mandarin.

## MEMORIZE

- 1 Psalm, 51st.
- 2 John, 17th Chapter.

## TO BE READ

- 1 The Tongue of Fire, translated by Cornaby.

## FOURTH YEAR

- 1 John.
- 2 The Discipline on the District Conference.
- 3 The Larger Catechism, completed.
- 4 Read or write, as above, anything in the Romanized or the equivalent in Mandarin.

## MEMORIZE

- 1 Isaiah, 53rd Chapter.
- 2 Corinthians, 13th Chapter.

## TO BE READ

- 1 The Messiah.

## 熟閱之書

- 1 德慧入門 楊格非著

## 第三年

- 1 路加約翰聖經撮要
- 2 教會例文論第四季
- 3 依經問答喻解上半 武林吉譯
- 4 或讀或默寫羅馬字新文紙開卷即讀或默寫不准先閱

## 熟閱之課

- 1 詩篇第五十一篇
- 2 約翰福音第十七章

## 熟閱之書

- 1 舌如火焰 高葆真譯

## 第四年

- 1 約翰福音
- 2 教會例文論連環會
- 3 依經問答喻解下半 武林吉譯
- 4 或讀或寫羅馬字之書與新文紙

## 熟背之書

- 1 以賽亞第五十三章
- 2 哥林多前書第十三章

## 熟閱之書

- 1 彌賽亞 廣學會出



# HISTORICAL REGISTER

## ANNUAL MEETINGS

### Central China Mission

YEAR	PLACE	PRESIDING OFFICER	SECRETARY
1875	Kiukiang	V. C. Hart	A. Stritmatter
1876	Kiukiang	V. C. Hart	A. Stritmatter
1877	Kiukiang	Bishop Wiley	A. Stritmatter
1878	Kiukiang	V. C. Hart	A. Stritmatter
1879	Kiukiang	V. C. Hart	A. Stritmatter
1880	Kiukiang	V. C. Hart	T. C. Carter
1881	Kiukiang	Bishop Bowman	M. L. Taft
1882	Kiukiang	J. R. Hykes	C. F. Kupfer
1883	Kiukiang	Bishop Merrill	G. W. Woodall
1884	Shanghai	Bishop Wiley	G. W. Woodall
1885	Kiukiang	V. C. Hart	G. W. Woodall
1886	Chinkiang	V. C. Hart	G. W. Woodall
1887	Chinkiang	Bishop Warren	E. S. Little
1888	Nanking	Bishop Fowler	J. C. Ferguson
1889	Chinkiang	Bishop Andrews	R. C. Beebe
1890	Shanghai	J. R. Hykes	R. C. Beebe
1891	Kiukiang	Bishop Goodsell	E. S. Little
1892	Nanking	Leslie Stevens	D. W. Nichols
1892	Wuhu	Bishop Mallalieu	J. J. Banbury
1893	Chukiang	Bishop Foster	J. J. Banbury
1894	Kiukiang	Bishop Ninde	R. O. Irish
1895	Nanking	Bishop Walden	R. O. Irish
1896	Kiukiang	Bishop Joyce	R. O. Irish
1897	Nanking	Bishop Joyce	E. James
1898	Kiukiang	Bishop Cranston	E. R. Jellison
1899	Nanking	Bishop Cranston	J. F. Newman
1901	Nanking	Bishop Moore	J. F. Newman
1901	Kiukiang	Bishop Moore	J. F. Newman
1902	Kuling	Bishop Moore	F. G. Henke
1903	Nanking	C. F. Kupfer	F. G. Henke
1904	Kiukiang	Bishop Moore	F. G. Henke
1904	Nanking	Bishop Bashford	F. G. Henke
1905	Kiukiang	Bishop Bashford	F. G. Henke
1906	Chinkiang	Bishop Spellmeyer	J. R. Trindle
1907	Nanking	Bishop Bashford	J. R. Trindle

### Central China Mission Conference

YEAR	PLACE	PRESIDING OFFICER	SECRETARY
1907	Nanking	Bishop Bashford	J. R. Trindle
1908	Kiukiang	Bishop Bashford	J. R. Trindle

\*From 1867 until 1875 monthly meetings were held, but the first Annual Meeting did not occur until 1875.

## Central China Annual Conference

YEAR	PLACE	PRESIDING OFFICER	SECRETARY
1909	Nanking	Bishop Lewis	Wm. R. Johnson
1910	Nanking	Bishop Lewis	J. R. Trindle
1911	Shanghai	Bishop Bashford	J. R. Trindle
1912	Kiukiang	Bishop Bashford	F. G. Henke
1913	Nanking	Bishop Bashford	F. R. Sibley
1914	Wuhu	Bishop Lewis	W. F. Wilson
1915	Nanking	Bishop Lewis	W. F. Wilson
1916	Nanking	Bishop Bashford	W. F. Wilson
1917	Nanking	Bishop Burt	W. F. Wilson
1918	Nanking	Bishop Welch	W. F. Wilson
1919	Nanking	Bishop Lewis	W. F. Wilson
1920	Nanking	Bishop Birney	W. F. Wilson

## ROLL OF MEMBERS OF THE MISSION

MEMBERS.	DATE OF JOINING	CONFERENCE OR STATE	CON- NECTION CEASED	DE- CEASED
V. C. Hart	1867	Erie Conference	1888	1904
E. S. Todd	1867		1869	
H. H. Hall	1870	California	1874	
John Ing	1871	St. Louis Conf.	1874	1878
A. Stritmatter	1873	Ohio Conference	1878	
John R. Hykes	1873	Cent. Penn. Conf.	1893	
A. J. Cook	1873	Pittsburg Conf.	1879	
W. E. Tarbell, M. D.	1874	New England Conf.	1875	
W. G. Benton	1877	Kentucky Conf.	1878	
T. C. Carter	1880	Gen. Tenn. Conf.	1882	
M. L. Taft	1880	New York Conf.	1884	
C. F. Kupfer	1881	C. German Conf.	1912	
M. C. Wilcox	1881	Rock River Conf.	1883	
T. H. Worley	1882	Nebraska Conf.	1884	
J. H. Worley	1882	Nebraska Conf.	1884	
G. W. Woodall	1882	Newark Conf.	1887	
James Jackson	1882	New York Conf.	1900	1918
W. C. Longden	1883	North China Conf.		(Note)
Joel A. Smith	1884	Iowa Conference	1885	
R. C. Beebe, M. D.	1884	North Ohio Conf.		
John Walley	1886	So. California Conf.	1894	1894
G. A. Stuart, M. D.	1886	Des Moines Conf.	1911	1911
E. S. Little	1886	So. California Conf.	1900	
J. J. Banbury	1886	N. Nebraska Conf.	1897	
J. C. Ferguson	1887	New England Conf.	1897	
D. W. Nichols	1888	Missouri Conf.	1905	
A. C. Wright	1889	St. Louis Conf.	1900	
E. R. Jellison, M. D.	1889	Wisconsin Conf.	1900	
Leslie Stevens	1890	W. Nebraska Conf.	1894	1894
Miss Laura Hanzlik	1891	Illinois	1904	
Miss Clara Collier	1891	Vermont	1895	
R. O. Irish	1893	Wisconsin Conf.	1897	
J. F. Newman	1895	Wisconsin Conf.	1903	
E. H. Hart, M. D.	1895	New York	1913	1913
Mrs. L. M. Walley	1896	England	1912	
E. James	1896	Wisconsin Conf.	1906	
	1914	California		
Miss Effie L. Abbott	1896	Michigan	1902	
Miss Mary F. Wilson	1896	Michigan	1900	
A. J. Bowen	1897	Illinois Conf.		
R. E. Maclean	1898	So. Kan. Conf.	1907	
H. F. Rowe	1898	North N. Y. Conf.		
W. F. Wilson	1898	New York		
F. G. Henke	1900	N. W. Ger. Conf.	1917	
M. R. Charles, M. D.	1900	Ohio	1912	
	1917	"		

## ROLL OF MEMBERS OF THE MISSION—Continued

MEMBERS.	DATE OF JOINING	CONFERENCE OR STATE	CON- SECTION CEASED	DE- CEASED
J. F. Wilson	1902	California	1907	
J. R. Trindle	1903	Iowa	1908	
	1917			
Spencer Lewis	1904	W. China Mission	1909	
Christia W. Hall	1904	W. China Mission	1908	
Caroline E. Maddock	1905	Id. Mrs. E. H. Hart	1908	
A. W. Martin	1905	Iowa		
J. H. Blackstone	1906	Illinois		
H. S. Houghton, M.D.	1906	Ohio	1915	
William R. Johnson	1906	Illinois	1909	
Mrs. M. E. Burns	1907	Maryland	1909	
Miss A. M. Peregrine	1908	Indiana	1909	
William F. Hummel	1908		1912	
F. C. Gale	1908	California Conf.	"	
F. Sibley	1908	St. Johns River C.	1916	
William Millward	1909	Id. Mrs. E. James.	1916	
George Miller	1909	Toronto Presbytery	1916	
W. B. Russel, M. D.	1909	Kentucky	1913	
J. G. Vaughan, M. D.	1909	Illinois	1912	
Lilburn Merrill, M.D.	1909	Colorado	1911	
Fred R. Brown	1910	Troy Conference	1912	
Mable A. McCracken	1911	Pennsylvania		
David Miller	1911	C. Inland Mission	1912	
John Wesley Boyyer	1911	Vancouver, B. C.	1918	
John Abraham Lewis	1912	Iowa	1918	
	1920	Illinois		
Frank P. Gaunt, M.D.	1913	Massachusetts		
H. C. Roys	1913	Michigan		
Miss A. M. Wixon	1913	New York		
Ernest M. Johnstone				
(M. D.)	1914		1916	
Miss Laura Dane	1914		1918	1918
Lyman L. Hale	1915	New England Conf.		
Frederick W. Dieterich	1915	Iowa		
Edgar K. Morrow	1916	New York		
Paul Hutchinson	1917	North Indiana		
Duncan F. Dodd	1917	New Eng. Southern		
William Kramer	1917		1920	
Margaret Corson	1917		1920	
Olive Krespach	1917		1918	
Walter E. Libby M.D.	1918			
H. Carl Steinheimer	1918	New York Conf.		
Robert C. Treman	1919	Wisconsin Conf.		
Robert E. Brown				
M.D.	1919			
Marietta Crane	1919			
Lidia Keller	1919			
J. Theron Ilick	1920			
Samuel J. Harrison	1920			

**MEMBERS OF CONFERENCE WHO HAVE BEEN MEMBERS OF  
CENTRAL CHINA MISSION OR CONFERENCE**

MEMBERS	RECEIVED ON TRIAL IN CON- FERENCE OR JOINED THE MISSION	RECEIVED INTO FULL MEMBER- SHIP	ORDAINED DEACON	ORDAINED ELDER	CONNEC- TION CEASED	DECEASED
V. C. Hart	1867				1888	1904
E. S. Todd	1867				1869	
A. Stritmatter	1873				1879	1879
John R. Hykes	1873				1893	
A. J. Cook	1873				1879	
W. G. Benton	1877				1878	
T. C. Carter	1880				1882	
M. L. Taft	1880				1884	
C. F. Kupfer	1881				1912	
M. C. Wilcox	1881				1883	
T. H. Worley	1882				1884	
J. H. Worley	1882				1884	1914
G. W. Woodall	1882				1887	
James Jackson	1882				1900	
W. C. Longden	1883					
Joel A. Smith	1884				1885	
R. C. Beebe	1884					
John Walley	1884				1894	1894
Geo. A. Stuart	1886				1911	1911
E. S. Little	1886				1900	
J. J. Banbury	1886				1897	
J. C. Ferguson	1887				1897	
D. W. Nichols	1888				1905	
A. C. Wright	1889				1900	
Leslie Stephens	1890				1894	1899
Nieh Chen-yih	1891	1893		1894	1905	
Wu Teh-yuen	1893	1897				
T'su Tsing-ch'en	1893	1897		1898		
R. O. Irish	1893				1897	
T'ien Yu-ming	1894	1897	1898	1900	1914	
Hu Chi-ping	1894	1897		1900	1909	
J. F. Newman	1895	1898	1896	1896	1903	
	1896					
E. James	1914				1906	
Chu Mei-fuh	1896	1905	1905	1907	1912	
Chiang Ming-chi	1896	1899	1899	1901	1912	
Chou Ten-yin	1896	1905	1905		1906	
A. J. Bowen	1897	1900	1897	1897		
Li Yun-shen	1897	1901	1901	1905		
H. F. Rowe	1897			1900		
Ts'ai Wen-yuen	1897	1905	1905	1910	1911	
R. E. Maclean	1898				1907	
W. F. Wilson	1898	1901	1903	1906		

MEMBERS	RECEIVED ON TRIAL IN CON- FERENCE OR JOINED THE MISSION	RECEIVED INTO FULL MEMBER- SHIP	ORDAINED DEACON	ORDAINED ELDER	CONNEC- TION CEASED	DECEASED
F. G. Henke	1900			1903	1917	
Wang Shih-ts'in	1900	1906	1906	1908	1912	
J. F. Wilson	1902		1905	1906	1907	
J. R. Trindle	1903	1907	1907	1907	1912	
	1917					
Spencer Lewis	1904				1909	
Tung Yui-shen	1905	1907	1907	1908		
Wang Yu-ch'ang	1905	1907	1907	1908		
Chang Yung-hsui	1905	1910	1910	1912		
A. W. Martin	1905	1908	1908	1910		
J. H. Blackstone	1906	1908	1906	1906		
Wang Shan-chih	1906	1908	1908	1910	1912	
Lu Chi-hwai	1906	1908	1908	1910		
Wm. R. Johnson	1907	1910	1908	1908	1912	
Chang K'e-ming	1907	1910	1910		1912	
Hwang Hsing-ren	{1907 1915	1909	1909	1912	1912	
Hwang Ts'ai-Chang	1907	1910	1910	1917		
Lei Tsai-ping	1907	1910	1910		1912	
Li Kwoh-ling	1907	1909	1910	1912		
Ts'ai Tsen-ts'an	1907	1910	1910		1912	
T'su Yu-ho	1907	1909	1909			
T'su Ching-hu	1907				1912	
Li Ch'uen-fan	1908	1910	1910	1914		
Yang Hsiao-ch'ing	1908	1910	1910	1914		
Chou T'ien-tu	1908	1912	1912	1914	1914	1914
Hu Si-chen	1908	1912	1912		1917	
F. C. Gale	1909				1912	
F. R. Sibley	1909	1913	1913		1916	
Geo. Miller	1909				1911	
Wm. Millward	1909	1913	1913			
Li Yo-hsi	1909				1911	
Hu Chen-chia	1909				1912	
Fred R. Brown	1910				1912	
Liu Shen-ming	1910				1912	
Liu Si-yuen	1908				1912	
Yang Yu-seng	1905				1912	
David Miller	1912				1912	
Chen Hsi-shen	1913	1917	1917	1919		
William F. Hummel	1913	1916	1914	1917		
John A. Lewis	1913					
	1920			1920	1918	
Chou Chia-yung	1914	1916	1916	1918		
Tsou Chi-chen	1914	1916	1916	1920		
Tsu Ming-kwan	1914	1916	1916	1918		

MEMBERS	RECEIVED ON TRIAL IN CON- FERENCE OR JOINED THE MISSION	RECEIVED INTO FULL MEMBER- SHIP	ORDAINED DEACON	ORDAINED ELDER	CONNEC- TION CEASED	DECEASED
Tu Kwan-tou	1914	1916	1916	1918		
Lyman L. Hale	1915	1915				
Earl A. Hoose	1915				1917	
Charles F. Johannaber	1915				1917	
Ko Ta-yung	1915	1917	1917		1919	
F. W. Dieterich	1916	1918	1916	1918		
Paul Hutchinson	1917			1917		
Duncan F. Dodd	1917					
Liu Wei-i	1917	1919	1919			
Wang Shi-hsi	1917	1919	1919	1920		
Yang Wang-chung	1917	1919	1919			
H. Carl Steinheimer	1918	1919				
Li Yu-yung	1917	1919	1918	1920		
Robert C. Treman	1919					
J. Theron Illick	1920					
Samuel J. Harrison	1920			1920		
Ling Ping-chen	1920					
Shen Kia-yu	1920					

[Note.—Any person examining this list, and noticing errors in the same or being aware of information that would add to the completeness of the list is requested to notify the Secretary of the Central China Annual Conference, Nanking, China.]

### Report of the Centenary Fund for 1920

Miss Wixon .....	\$	50.00	
Dr. H. F. Rowe .....		100.00	
Dr. A. W. Martin .....		100.00	
Rev. Liu Chi Hwai .....		4.00	
Rev. Cheo Kia Yung and Kiang Tan Chai Church ...		16.00	
Mr. T. L. Chen of Y. M. C. A.....		14.00	
Mr. H. C. Roys .....		115.00	
Rev. Chang Yung Hsiun.....		75.00	
Dr. M. R. Charles .....		50.00	
			524.00
To Work a/c Rev. E. James .....		524.00	
Previously reported .....		15,795.23	
Total up to date (November 23, 1920).....		16,319.23	
Total amount pledged .....	13,831.80		
Amount paid in excess of pledges .....	2,487.43		
		16,319.23	16,319.23



## **PROGRAM**

---

### **Tuesday, October 26**

- 5.30 P.M. Reception and supper with mission.  
7.30 General reception, Kuilan Church.

### **Wednesday, October 27**

(and days following, except as noted)

- 8.30 A.M. Devotions, in charge of Bishop Birney.  
9.30 Conference session.  
2.00 P.M. Cabinet and committee meetings.  
4.00 Recreation.  
4.30 Retreat, for workers only.

### **Sunday, October 31**

- 8.30 A.M. Conference love-feast, led by **Rev. A. W. Martin**.  
10.30 Public worship and ordination service.  
Bishop Birney in charge.  
2.30 P.M. Young People's Rally. **Speakers: Miss Geraldine**  
Townsend and Rev. Li Yu Yung.  
7.30 Special evangelistic and intercessory service.

### **Monday, November 1**

- 8.30 A.M. Devotions, in charge of Bishop Birney.  
9.30 Conference session.  
2.00 P.M. Cabinet and committee meetings.  
4.00 Recreation.  
4.30 Retreat, for workers only.  
7.30 Christian literature rally. **Speaker: Dr. R. Y. Lo.**  
Conference communion service.  
Appointments, followed by adjournment.

**Note:** The Women's Conference will be in session every week-day morning from 10 to 12 o'clock.

## **SPECIAL SERVICES**

---

### **Wednesday Evening, October 27**

7.30 P.M. Centenary Stereopticon Lecture.

Speaker: Rev. Paul Hutchinson.

### **Thursday Evening, October 28**

7.30 P.M. Centenary Stereopticon Lecture.

Speaker: Rev. Paul Hutchinson.

### **Friday Evening, October 29**

7.30 P.M. Central China Conference Centenary Celebration.

### **Saturday Evening, October 30**

7.30 P.M. Program to be announced later.

### **Sunday Evening, October 31**

7.30 P.M. Evangelistic Rally.

### **Monday Evening, November 1**

7.30 P.M. Christian Literature Rally. Speaker: Dr. R. Y. Lo.

# UNIFORM STATISTICAL BLANKS

**Table Number 1.**

GENERAL SUMMARY OF PROPERTY VALUATIONS,  
including Woman's Foreign Missionary Society Property.  
(Enumerated with values of Land and Buildings attached.)

	No. of	Value
University and College Property :		
(a) Board of Foreign Missions .....	† 1	\$624.130
(b) Woman's Foreign Missionary Society ..	† 1	62.000
Theological or Bible Training Schools:		
(a) Board of Foreign Missions .....	† 1	6.000
(b) Woman's Foreign Missionary Society....	1	40.000
Higher Primary and Middle Schools:		
(a) Board of Foreign Missions .....	18	40.100
(b) Woman's Foreign Missionary Society ..	7	73.000
Hospital and Dispensary Property:		
(a) Board of Foreign Missions .....	1	20.000
(b) Woman's Foreign Missionary Society ..	1	30.000
Property for Industrial Schools, Orphanages, Leper Homes, etc.:		
(a) Board of Foreign Missions .....		
(b) Woman's Foreign Missionary Society ..		
Printing Presses, Machinery, Stock, etc. ....		
Missionary Residences:		
(a) Board of Foreign Missions .....	13	66.200
(b) Woman's Foreign Missionary Society....	1	15.000
Number and Values of Churches (Totals)* ... ..	24	79.200
Number and Values of Parsonages (Totals)* ....	17	18.100
Total Value of all Property.....		1,073.730

\*For Particulars by Station and Circuits see Table III.

†Union work.

[illegible]

# STATISTICAL TABLES, PART II.

DISTRICTS STATIONS AND CIRCUITS	WORKERS*										MEMBERSHIP																																																																																																																																																																																																																																																																																																																																																																																																																																																																																																																																																																																																																																																																																																																																																																																																																																																																																																																																																																																																																																																																																																																																																																																																																																																																																																																																																																																																																																																																																																																																																																																																																																																																																																																																																																																																																																																																																																																																																																																																																																																																																																																																																																																																																																																																																																																																																																																																																																																																																																																																																																																																																																																																																																																																																																																																																																																																																																																																			
	MISSIONARIES					CHINESE MEMBERS OF CONF.					LOCAL PREACHERS					EXHORTERS					SCHOOL TEACHERS					HOSPITAL HELPERS					FULL MEMBERS					PROBA- TIONERS					No. of Baptised Children under instruction					BAPTISMS DURING THE YEAR																																																																																																																																																																																																																																																																																																																																																																																																																																																																																																																																																																																																																																																																																																																																																																																																																																																																																																																																																																																																																																																																																																																																																																																																																																																																																																																																																																																																																																																																																																																																																																																																																																																																																																																																																																																																																																																																																																																																																																																																																																																																																																																																																																																																																																																																																																																																																																																																																																																																																																																																																																																																																																																																																																																																																																																																																																																																																																
Ordnained Men																																																																																																																																																																																																																																																																																																																																																																																																																																																																																																																																																																																																																																																																																																																																																																																																																																																																																																																																																																																																																																																																																																																																																																																																																																																																																																																																																																																																																																																																																																																																																																																																																																																																																																																																																																																																																																																																																																																																																																																																																																																																																																																																																																																																																																																																																																																																																																																																																																																																																																																																																																																																																																																																																																																																																																																																																																																																																																																																														

# STATISTICAL TABLES, PART III.

DISTRICTS  STATIONS AND  CIRCUITS	SUNDAY SCHOOLS			EPWORTH LEAGUES OR SIMILAR ORGANI- ZATIONS		CHURCHES AND PARSONAGES				CONTRIBUTIONS IN MEXICAN DOLLARS														
	No. of Schools	No. of Teachers	No. of Scholars	No. of Chapters	No. of Members	No. of Churches	Value of Same	No. of Rented Halls	No. of Parsonages	Value of Same	SUPPORT OF MINISTRY			MISSIONARY CONTRIBUTIONS				Preachers' Aid Society	Other Benevolences	LOCAL EXPENSES		CONFER- ENCE EXPENSES		
											For Bishops	For the District Superintendent	For Pastors	Foreign Missions	Home Missions	W. F. M. Society	Total for Missions			Church Building or Repairs	Current Expenses	General Conference	Central Conference	
CHINKIANG DIST.																								
Chinkiang Central	6	45	350	1	30	4	16000	3	1	1800	3.00	..	194.00	..00	40.00	..	45.00	8.00	40.00	6500	92.00	2.00	..	
Tanyanghsien	..	..	..	..	..	..	..	..	..	..	..	..	..	..	..	..	..	..	..	..	..	..	..	
Total	6	45	350	1	30	4	16000	3	1	1800	3.00	..	194.00	5.00	40.00	..	45.00	8.00	40.00	6500	92.00	2.00	..	
Last year	7	42	450	1	30	3	14000	6	1	1800	2.50	..	164.00	5.00	31.50	..	69.00	6.00	7.00	38	44.60	..	..	
Increase	..	3	..	..	..	1	2000	..	..	..	.50	..	30.00	..	8.50	..	..	2.00	33.00	6462	47.40	2.00	..	
Decrease	1	..	100	..	..	..	..	3	..	..	..	..	..	..	..	..	24.00	..	..	..	..	..	..	
NANKING DIST.																								
Central Church	3	60	460	1	130	1	25300	1	2	3000	6.00	..	430.00	25.00	100.00	..	125.00	..	200.00	..	200.00	5.00	..	
Kianguingchen	4	16	184	2	78	2	800	1	2	1200	4.00	..	50.00	..	2.00	..	..	..	1400	33.87	..	..	..	
Kiangtankiai	6	38	530	4	226	1	14900	2	..	..	3.00	..	100.00	2.00	18.00	2.00	22.00	5.00	150.00	7000	35.00	5.00	..	
Hochow	2	11	160	..	..	1	3900	1	1	1200	1.00	..	50.00	2.00	4.00	..	6.00	..	3400	34.19	..	..	..	
Molingkwan	1	4	99	1	99	..	..	2	..	..	..	..	35.00	..	3.00	..	3.00	..	15.00	..	..	..	..	
Pu'kiatsih	1	6	80	..	..	1	600	1	1	400	1.00	1.00	85.00	1.00	1.00	24.00	26.00	2.00	..	43.00	1.00	..	..	
Siaotanyang	1	6	100	2	90	1	1100	1	1	900	1.00	..	70.00	1.00	10.00	..	11.00	..	10.90	220	33.65	3.00	..	
Sipu	1	5	65	1	65	2	900	1	1	500	2.00	..	100.00	2.00	5.00	15.00	..	..	30	31.28	2.00	..	..	

South gate	1	4	62	..	..	1	..	1	..	..	60.00	1.00	1.00	..	..	..	2.00	..	3.10	..	9.13	..	..
West Nanking	2	15	170	..	..	1	4000	1	1	1200	1.00	..	60.00	1.00	..	..	..	..	..	..	..	..	..
Total	22	105	1910	11	688	10	51500	8	9	8400	19.00	1.00	1040.00	34.00	144.00	41.00	195.00	7.00	379.00	12050	419.62	16.00	..
Last year	23	109	1839	6	421	11	60200	3	10	8300	21.00	..	845.00	35.00	144.00	635.00	811.00	16.00	38.22	161	451.00	3.00	..
Increase	..	..	71	5	267	..	..	5	..	100	1.00	..	195.00	..	..	..	..	..	340.78	11889	..	13.00	..
Decrease	1	4	..	..	..	1	8700	1	..	..	2.00	..	..	1.00	..	594.00	616.00	9.00	..	31.38	..	..	..
<b>NINGKWOFU DIST.</b>																							
Ningkwofu	3	18	180	..	..	1	..	4	..	..	3.00	..	72.00	5.00	42.00	17.00	64.00	3.00	37.00	..	40.15	..	..
Shuiyang	1	4	40	..	..	1	..	..	..	..	1.00	..	10.00	..	..	3.00	3.00	1.00	..	..	1.00	..	..
Total	4	22	220	..	..	2	..	4	..	..	4.00	..	82.00	5.00	42.00	20.00	67.00	4.00	37.00	..	40.15	1.00	..
Last year	3	18	200	..	..	..	..	2	..	..	3.00	..	48.00	5.00	46.00	13.00	64.00	3.00	..	..	39.00	..	..
Increase	1	4	20	..	..	2	..	2	..	..	1.00	..	34.00	..	..	7.00	3.00	1.00	37.00	..	1.15	1.00	..
Decrease	..	..	..	..	..	..	..	..	..	..	..	..	..	..	4.00	..	..	..	..	..	..	..	..
<b>WANNAN DIST.</b>																							
Tunki	..	..	..	..	..	..	..	4	..	..	2.00	..	111.40	5.00	5.00	2.00	12.00	1.00	10.80	..	10.80	..	..
Last year	..	..	..	..	..	..	..	..	..	..	..	..	..	..	..	..	..	..	..	..	..	..	..
Increase	..	..	..	..	..	..	..	4	..	..	2.00	..	111.40	5.00	5.00	2.00	12.00	1.00	10.80	..	10.80	..	..
Decrease	..	..	..	..	..	..	..	..	..	..	..	..	..	..	..	..	..	..	..	..	..	..	..
<b>WUHU DIST.</b>																							
Hwangchi	1	3	60	..	..	1	200	2	1	300	1.00	..	32.00	1.00	3.00	..	4.00	1.00	..	..	11.40	..	..
Ichishau	1	5	38	..	..	..	..	1	1	600	3.00	..	108.90	3.00	9.07	6.20	18.27	..	75.00	..	5.53	..	..
Second Street	5	24	160	..	..	2	8000	2	4	4500	3.00	..	110.00	..	..	..	..	3.00	108.50	1000	30.92	2.00	1.00
Taipingfu	2	5	80	..	..	1	2000	1	1	1200	2.00	..	60.00	2.00	2.00	..	4.00	1.00	27.00	..	36.00	..	..
Tikou	2	5	60	..	..	2	300	1	1	300	1.00	..	72.00	2.00	2.00	..	76.00	1.00	..	..	12.24	..	..
Yuintsa	2	6	101	..	..	2	1500	1	1	1000	2.00	..	85.00	1.00	10.00	..	11.00	2.00	4.00	..	46.99	..	..
Total	13	48	499	..	..	8	12000	2	7	7900	12.00	..	467.90	9.00	26.07	6.20	113.27	8.00	214.50	1000	149.08	2.00	1.00
Last year	13	56	503	..	..	7	19800	1	6	6200	14.00	2.00	288.00	12.00	7.00	144.00	194.00	8.00	78.00	..	134.00	..	..
Increase	..	..	..	..	..	1	..	1	1	1700	..	..	179.90	..	19.07	..	..	..	136.50	1000	15.08	2.00	1.00
Decrease	..	8	4	..	..	..	7800	..	..	..	2.00	2.00	..	3.00	..	137.80	80.73	..	..	..	..	..	..
Conference Total	45	280	2979	12	718	24	79500	21	17	18100	40.00	1.00	1895.30	58.00	257.07	69.20	432.27	28.00	681.30	19550	711.65	21.00	1.00
Last year	46	285	2992	7	451	21	94000	12	17	16000	40.00	4.00	1445.00	57.00	255.00	832.00	1138.00	33.00	124.00	3961	668.00	4.00	..
Increase	..	..	..	5	267	3	..	9	..	2100	..	..	450.30	1.00	2.07	..	..	..	557.30	15589	43.65	17.00	1.00
Decrease	1	5	13	..	..	..	14500	..	..	..	3.00	..	..	..	..	762.80	705.73	5.00	..	..	..	..	..

# STATISTICAL TABLES, PART IV.

NAMES & CLASSES OF SCHOOLS	No. of Schools*	TEACHERS*			PUPILS*			RECEIPTS						EXPENSES						
		Foreign			Chinese						From Scholars		From Other Sources				Current Expenses	Furnishing and Equipment	Building and Repairs	Total Expenses
		Men	Women	Total	Men	Women	Total	Male	Female	Total	For Tuition	Board and Room Rent	Appropriations	Special Gifts	Sundry	Total Receipts				
Including W.F.M.S. Enumerate Particulars By Districts																				
LOWER PRIMARY SCHOOLS																				
CHINKIANG DIST.																				
Chinkiang	11				5	8	13	73	150	223	215		100				700			
Tanyang	1				1		1	24		24	60		100				160			
Total	12				6	8	14	97	150	247	275		200				860			
NANKING DIST.																				
University	1				6		6	33	13	46	494									
Central Church	2				3	1	4	40	42	82	90									
Kianglungchen	5				3	2	5	90	56	146	150		190				340			
Kiangtangkiat	3				2	5	7	20	120	140	234	70	840			1150	1170	10	200	
Hochow	3				5	1	6	81	45	126	300								1380	
Molingkwan	4				4	1	5	148	22	170	320		286			615	615		615	
Pukiachi	2				3		3	67		67	100		148			248	248		248	
Siaotanyang	3				3	1	4	40	32	72	200		56			256	268		3	
Sip'u	2				2	1	3	50	20	70	200		100			300			271	
South gate	2				2	1	3	20	30	50			150							
Total	27				33	13	46	589	380	969	2097	70	1776			2569	2641	10	203	

NINGKWOFU DIST.																			
Ningkwofu	3				6	1	7	63	50	113	320		032			585			550
Shuiyang	1				1		1	28	18	36									
Total	4				7	1	8	91	58	149	320		320			585			550
WANNAN DIST.																			
Tunki	3				5		5	89	22	111	60			1220			1280		
Total																			
WUHU DIST.																			
Hwangchi	2				1	1	2	32	14	46	86		120			86	98		100
Second Street	5				4	5	9	42	140	182						185			
Taipingfu	3				2	1	3	30	15	45	40		160			62	3.50		139
Tikau	4				2	1	3	32	31	63	30		40			100			62
Yuintsao	2				2	2	4	23	40	63	84		204						276
Total	16				11	10	21	159	240	399	240		524	1220		433	98	3.50	577
Conference total	62				62	32	94	1025	850	1875	3042	70	2820	1220		3587	4879	13.50	203

\*Note.—All schools, teachers and pupils in work of W. F. M. S. should be included.

## STATISTICAL TABLES, PART IV.—Continued

NAMES & CLASSES OF SCHOLARS	No. of Schools	TEACHERS			PUPILS			RECEIPTS						EXPENSES						
		Foreign			Chinese						From Scholars		From Other Sources				Current Expenses	Furnishing and Equipment	Building and Repairs	Total Expenses
		Men	Women	Total	Men	Women	Total	Male	Female	Total	For Tuition	Board and Room Rent	Appropriations	Special Gifts	Sundry	Total Receipts				
Including W.F.M.S. Enumerate Particulars by Districts		Men	Women	Total	Men	Women	Total	Male	Female	Total	For Tuition	Board and Room Rent	Appropriations	Special Gifts	Sundry	Total Receipts				
HIGHER PRIMARY SCHOOLS																				
CHINKIANG DIST.																				
Chinkiang	2	.	.	.	9	.	9	85	39	124	1100	700	800	.	.	.	1253	440	.	.
NANKING DIST.																				
University	1	1	1	2	10	.	10	162	.	162	12760	.	.	.	.	.	.	.	.	.
Central Church	2	.	.	.	3	1	4	40	42	82	90	.	.	.	.	.	.	.	.	.
Kiangtankiai	1	.	.	.	4	.	4	60	.	60	210	.	.	200	.	410	450	10	3	453
Hochow	1	.	.	.	4	.	4	59	.	59	120	.	200	.	.	.	.	.	.	.
Siaotanyang	1	.	.	.	3	.	3	20	.	20	240	.	100	.	.	340	348	.	5	353
Sip'u	1	.	.	.	3	.	3	20	.	20	100	.	150	20	.	270	.	.	.	.
Southgate	1	.	.	.	1	.	1	12	.	12	.	.	150	.	.	.	.	.	.	.
West Nanking	1	.	.	.	7	.	7	60	.	60	210	180	.	.	.	.	.	.	.	.
Total	9	1	1	2	35	1	36	433	42	475	13730	180	600	220	.	1020	798	10	8	806
NINGKWOFU DIST.																				
Ningkwofu	1	.	.	.	4	.	4	42	.	42	300	60	360	.	.	.	.	.	.	.
Shuiyang	1	.	.	.	2	.	2	3	.	3	.	30	100	.	.	100	.	.	.	322
Total	2	.	.	.	6	.	6	45	.	45	300	90	460	.	.	100	.	.	.	322

WUHU DIST.																		
Yüntsao	1	.	.	2	1	3	22	.	22	72	.	150	.	.	222	212	2	1
Conference Total	14	1	1	2	52	2	54	585	81	666	15202	970	2010	220	1342	2263	452	5
MIDDLE SCHOOLS																		
Chinkiang Girls School	1	.	3	3	3	7	10	.	19	19*	2865	.	4200	.	* 7065	* 6114	.	* 2228
NANKING DIST.																		
University and Central Church	2	5	5	10	23	8	31	224	135	359	23978	.	.	.	** 8900	** 1500	** 1000	** 11400
Kiangtangkai	1	.	.	5	.	5	45	.	45	240	260	.	1311	.	1811	1776	30	5
Conference Academy	1	1	1	2	8	.	8	55	.	55	340	360	.	.	700	.	.	700
Totals	4	6	6	12	36	8	44	324	135	459	24558	620	1311	.	2511	10676	1530	1005
Ninkwofu District	1	.	.	5	.	9	77	.	77	860	1350	1800	.	.	4010	.	.	4010
Conference total	6	6	9	15	48	15	63	401	154	555	28283	1970	6000	1311	13586	16790	1530	3233
BIBLE TRAINING SCHOOLS																		
Hitt Training Schools	1	.	2	2	3	3	6	.	81	81	1558	.	.	.	.	.	.	.
† Bible Teachers Training School	1	.	2	2	3	3	6	.	43	43	1100	.	3700	.	.	629	40,000	76439
Total	2	.	4	4	6	6	12	.	124	124	2658	.	3700	.	.	629	40,000	76439
COLLEGES																		
† Nanking University	1	16	5	21	22	.	249	1	250	26422	.	† 160	414	76628	.	† 101276	† 10980	† 121,339
THEOLOGICAL SCHOOLS																		
† Nanking Union Theological Seminary	1	5	.	.	4	.	4	155	.	155	510	3020	17000	.	20530	19100	.	19100

† Union Work † These figures for all departments including Middle Schools and Primary Schools of the University.

\* These figures are for combined Lower and Higher Primary Schools and Middle Schools not reckoned separately.

\*\* These figures are incomplete for W.F.M.S. only. || School opened only part of the year. Report incomplete.



# STATISTICAL TABLES, PART V.

NAME OF HOSPITALS AND DISPENSARIES	WORKERS						NO. OF PATIENTS										
	No. Foreign Physicians	No. Foreign Nurses	No. Foreign Chemists, Pharmacists, etc.	No. Chinese Physicians	No. Chinese Nurses	No. Students and Assistants	IN-PATIENTS		DISPENSARY PATIENTS	OUT-PATIENTS							
Including those of the W. F. M. S.							Number of In-Patients	Total No. of days spent in Hospital by In-Patients	First Calls at Dispensary	Return Calls at Dispen- sary	No. of First Visits to Out-patients	No. of Return Visits to Out-patients	No. of Country Trips	No. of Different Persons Examined professionally on Country trips	Total No. of Different Persons Treated	Total No. of Treatments	
WUHU DISTRICT																	
Wuhu General Hospital . . .	2	2	.	1	4	4	857	7596	7773	4927	481	.	3	10	.	.	
W. F. M. S.	1	1	.	.	6	2	.	.	.	.	.	.	.	.	.	.	
Letite Mas: n Quinne Hospital																	
Total . . . . .	3	3	.	1	10	6	857	7596	7773	4927	481	.	3	10	.	.	

STATISTICAL TABLES PART V.—Continued.

NAME OF HOSPITALS AND DISPENSARIES	OPERATIONS				RECEIPTS				EXPENSES					
	General Anesthesia	Local Anesthesia	Without Anesthesia	Total No. of Operations	FROM FEES		FROM SPECIAL CHARGES		Total Receipts	Current Expenses	Furnishing and Equipment	Building and Repairs	Total Expenses	
Including those of the W. F. M. S.														
Wunu District														
Wunu General Hospital . . .	275	16	174	465	7871.34	1107.16	1403.82	3000	3577.52	16909.84	11,788.91	4038.21	1099.72	16,926.84
W. F. M. S.	..	..	..	..	..	..	..	..	..	..	..	..	..	..
Leetie Mason Quinne Hospital	..	..	..	..	..	..	..	..	..	..	..	..	..	..
Total . . . . .	275	16	174	465	7871.34	1107.16	1403.82	3000	3577.52	16909.84	11,788.91	4038.21	1099.72	16,926.84

RECEIVED BY	
COR. SECY. NORTH	
5/25/21	
TO	DATE
BY	ANSWERED DATE
BY	PASSED TO FILE DATE
BY	FILED DATE