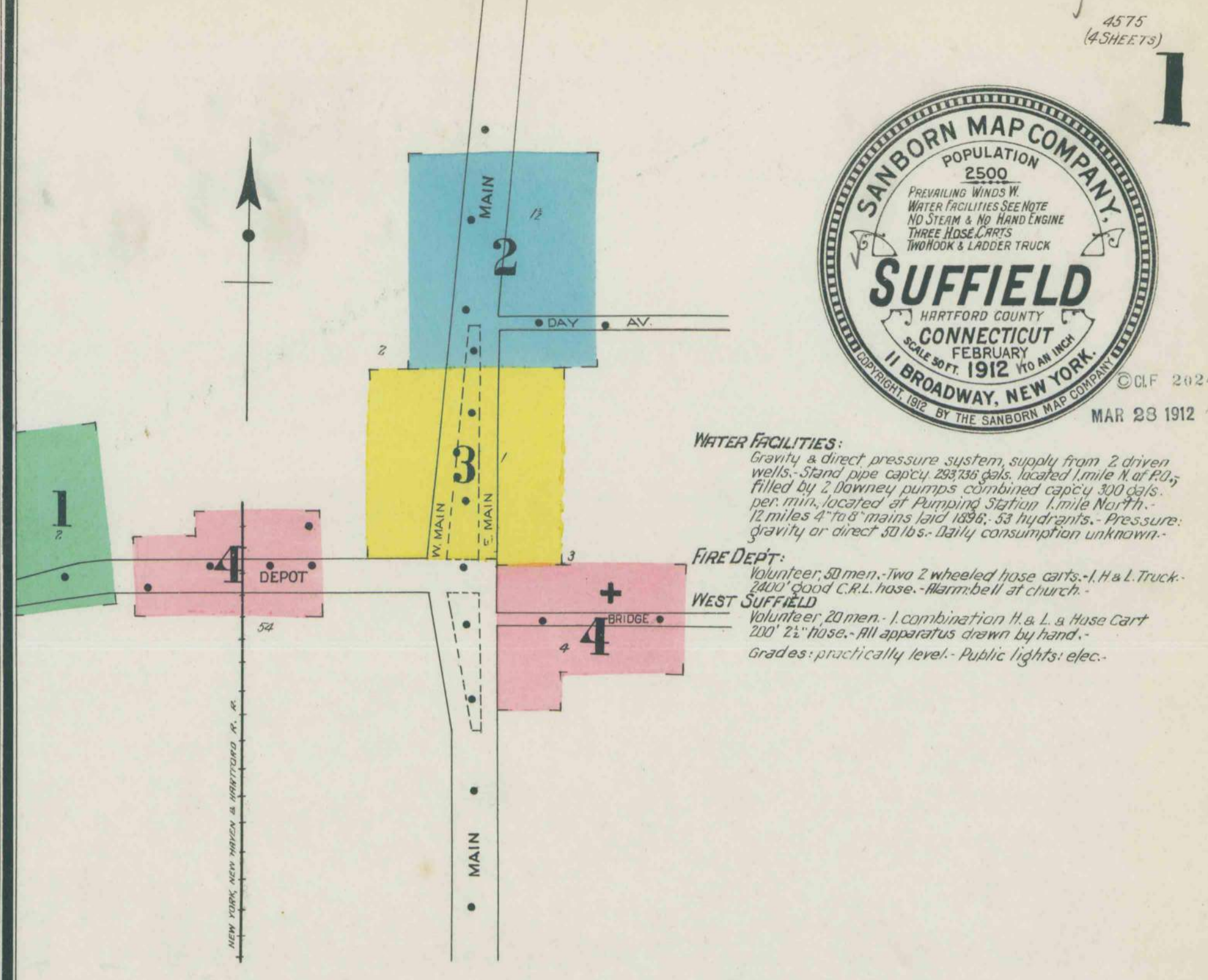
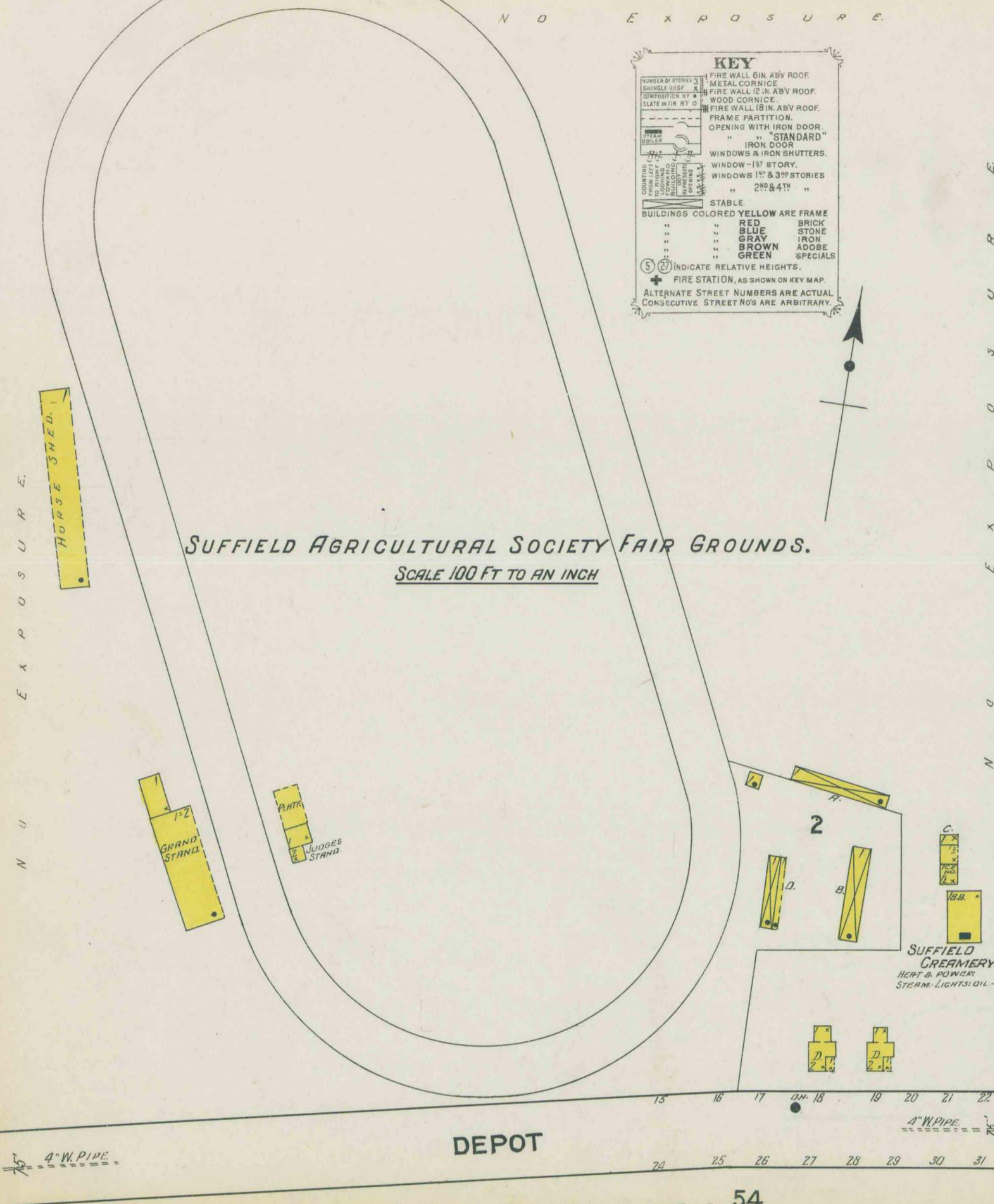


KEY

[Symbol]	FIRE WALL 6 IN. ADV. ROOF
[Symbol]	METAL CORNICE
[Symbol]	FIRE WALL 12 IN. ADV. ROOF
[Symbol]	WOOD CORNICE
[Symbol]	FIRE WALL 18 IN. ADV. ROOF
[Symbol]	FRAME PARTITION
[Symbol]	OPENING WITH IRON DOOR
[Symbol]	" " " " " " " "
[Symbol]	IRON DOOR
[Symbol]	WINDOWS & IRON SHUTTERS
[Symbol]	WINDOWS 1ST & 3RD STORIES
[Symbol]	" " " " " " " "
[Symbol]	WINDOWS 2ND & 4TH " " " "
[Symbol]	STABLE
[Symbol]	BUILDINGS COLORED YELLOW ARE FRAME
[Symbol]	BRICK
[Symbol]	RED
[Symbol]	STONE
[Symbol]	BLUE
[Symbol]	IRON
[Symbol]	BROWN
[Symbol]	ADOBÉ
[Symbol]	GREEN
[Symbol]	SPECIALS
[Symbol]	INDICATE RELATIVE HEIGHTS.
[Symbol]	FIRE STATION, AS SHOWN ON KEY MAP.
[Symbol]	ALTERNATE STREET NUMBERS ARE ACTUAL
[Symbol]	CONSECUTIVE STREET NOS ARE ARBITRARY



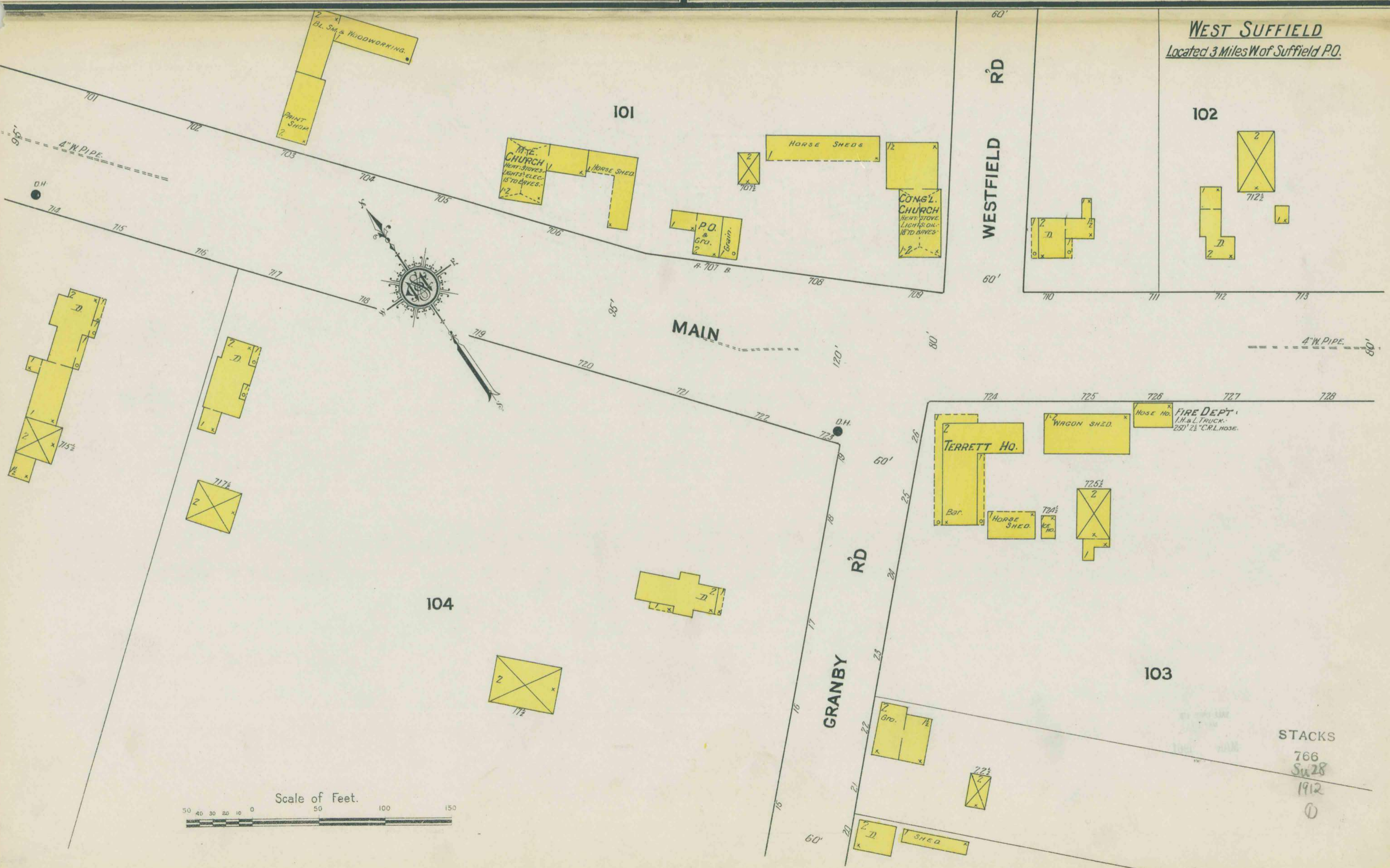
WATER FACILITIES:
Gravity & direct pressure system, supply from 2 driven wells. Stand pipe capacity 253,385 gals. located 1/2 mile N. of P.O. Filled by 2 Downey pumps combined capacity 300 gals. per min., located at Pumping Station 1/2 mile North. 12 miles 4" to 8" mains laid 1896. 33 hydrants. Pressure: gravity or direct 30 lbs. Daily consumption unknown.

FIRE DEPT.:
Volunteer, 30 men. Two 2 wheeled hose carts. 1 H. & L. Truck. 200' good C.R.L. hose. Alarm bell at church.

WEST SUFFIELD
Volunteer, 20 men. 1 combination H. & L. & Hose Cart 200' 2 1/2" hose. All apparatus drawn by hand. Grades: practically level. Public lights: elec.

INDEX.

SPECIALS.	SHEET	N	P	S	K	M	T
First Congregational Church	3						
Fuller, E. A., Tobacco Packing	4						
Baptist Church	3						
Bissell, L. P., Bro. & Co., Cigar Mfg and Tobacco Packing	4						
Congregational Church	1						
Connecticut Literary Institution	3						
Episcopal Church	4						
Fire Department at W. Suffield	4						
Kent Memorial Library	3						
Methodist Episcopal Church	1						
N. Y. N. H. & H. R. R. Depots	4						
Post Office	3						
" " at West Suffield	1						
Public School	4						
Housatonic Power Co., Pumping & Elec. Sub-station	2						
Spencer Bros. Hay, Grain, Coal & Lumber	4						
Suffield Agricultural Society Fair Grounds	1						
" Creamery	1						
" House	3						
Terrett House	1						
Town Hall	3						



FEB. 1912
SUFFIELD
CONN.

TOBACCO
BARN
2113

Located 2 Miles N. of P.O.

HOUSATONIC POWER CO.
PUMPING & ELEC. SUB. STATION.

RUNS NIGHT & DAY - POWER & LIGHTS;
ELEC. 2 DOWNNEY PUMPS, COMBINED
CAPACITY 300 GALS. PER MIN -
2 CHEM. EXTORS.

SPRINGFIELD RD

D.H.

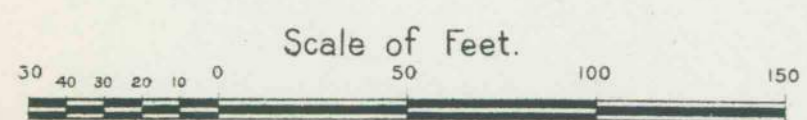


MAIN

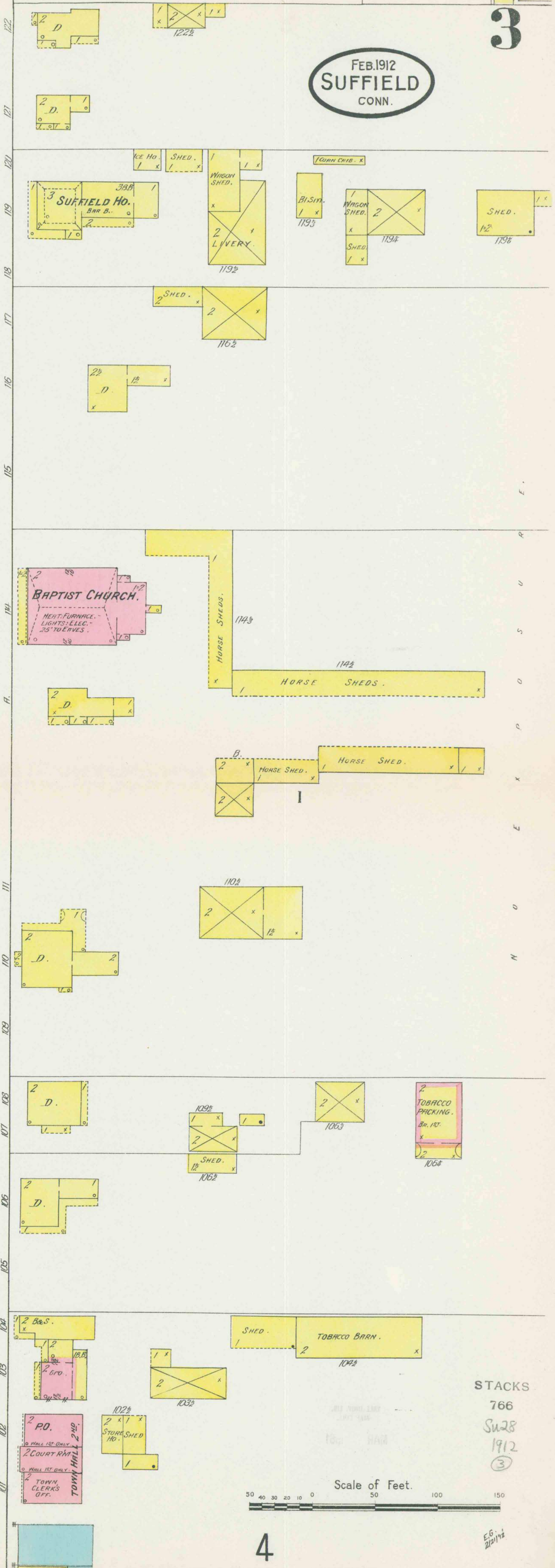
W. MAIN

E. MAIN

DAY AV.



STACKS
766
Su 28
1912
②



STACKS
766
S228
1912
③

Scale of Feet.
50 40 30 20 10 0 50 100 150

90'

95'

8" W. PIPE
D.H.

D.H.

D.H.

8" W. PIPE

D.H.

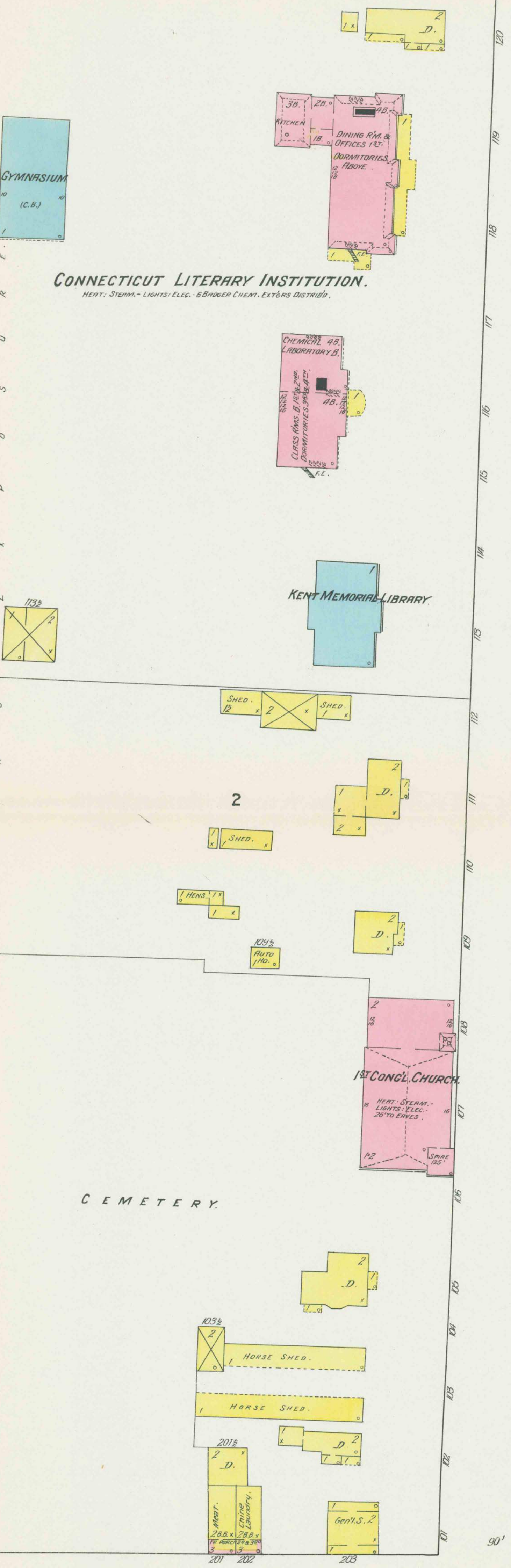
W. MAIN

E. MAIN

90'

75'

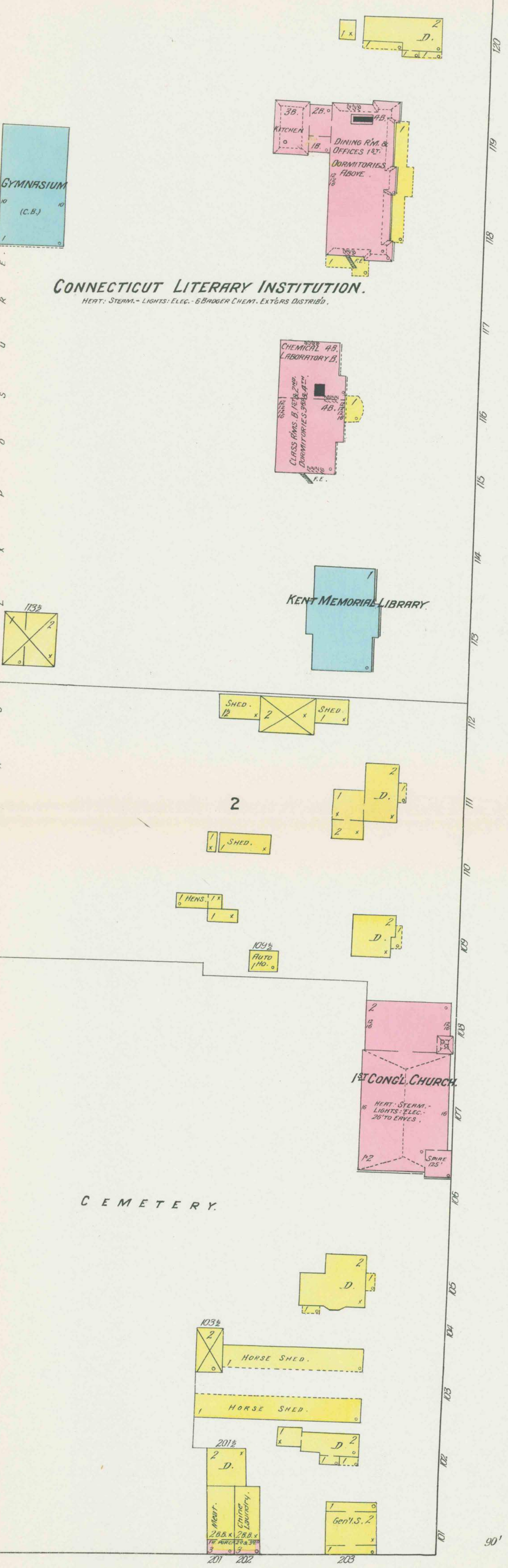
CONNECTICUT LITERARY INSTITUTION.
HEAT - STEAM - LIGHTS - ELEC. - BRIDGE CHEM. EXT'RS. DISTRIB.



DEPOT

6" W. PIPE

5" W. PIPE



FEB. 1912
SUFFIELD
CONN.

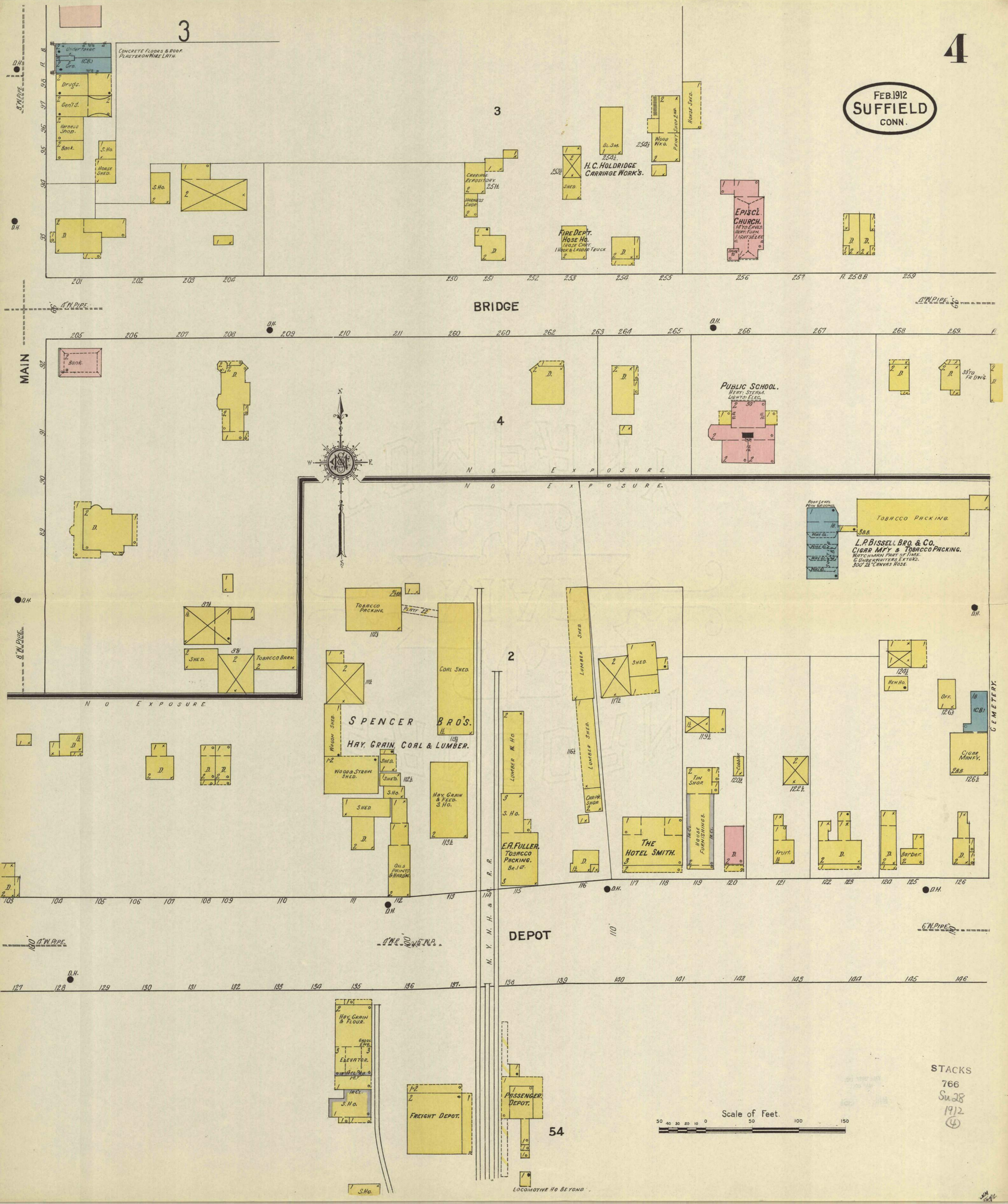
3

3

4

2

54



STACKS
766
Su 28
1912
④

