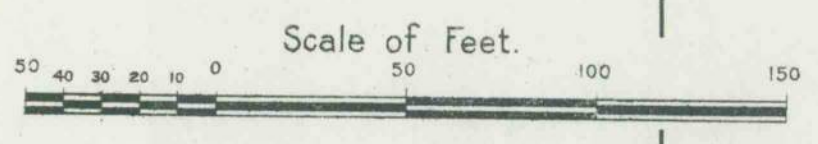
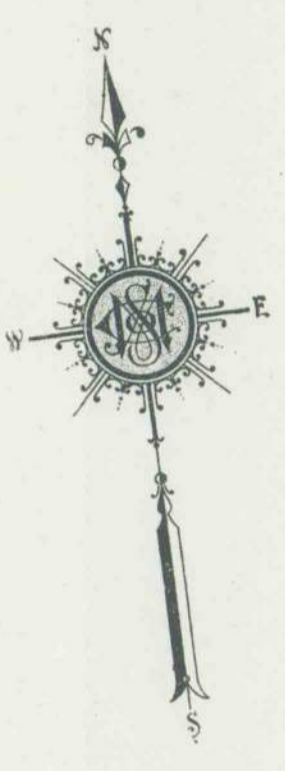




JUNE 1911  
ROCKVILLE  
CONN.



STACKS  
766  
R593  
1911  
②

RIVER ST.

W. MAIN

BECKER

UNION

PROSPECT

UNION

VILLAGE

ORCHARD

110

109

107

108

19

20

17

8

9

6\"/>

10\"/>

6\"/>

6\"/>

6\"/>

10\"/>

10\"/>

10\"/>

D.H.

D.H.

D.H.

53

41

33

29

26

24

22

20

18

16

14

12

10

8

6

4

2

0

136

134

132

130

128

126

124

122

120

118

116

114

112

110

108

106

104

102

100

98

96

94

92

156

152

150

148

146

144

142

140

138

136

134

132

130

128

126

124

122

120

118

116

114

112

110

108

106

104

102

100

98

96

94

92

90

88

86

84

82

80

78

76

74

72

70

68

66

64

127

125

123

121

119

117

115

113

111

109

107

105

103

101

99

97

95

93

91

89

87

85

83

81

79

77

75

73

71

69

67

65

63

61

59

57

55

53

51

49

47

45

43

41

39

37

35

33

31

29

27

25

23

21

19

17

15

13

11

9

7

5

3

1

0

0

0

0

0

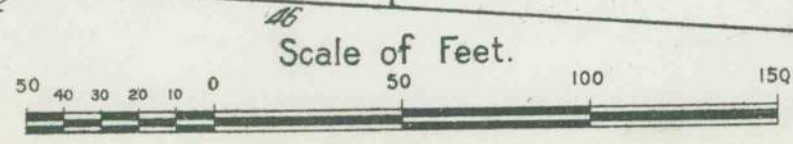
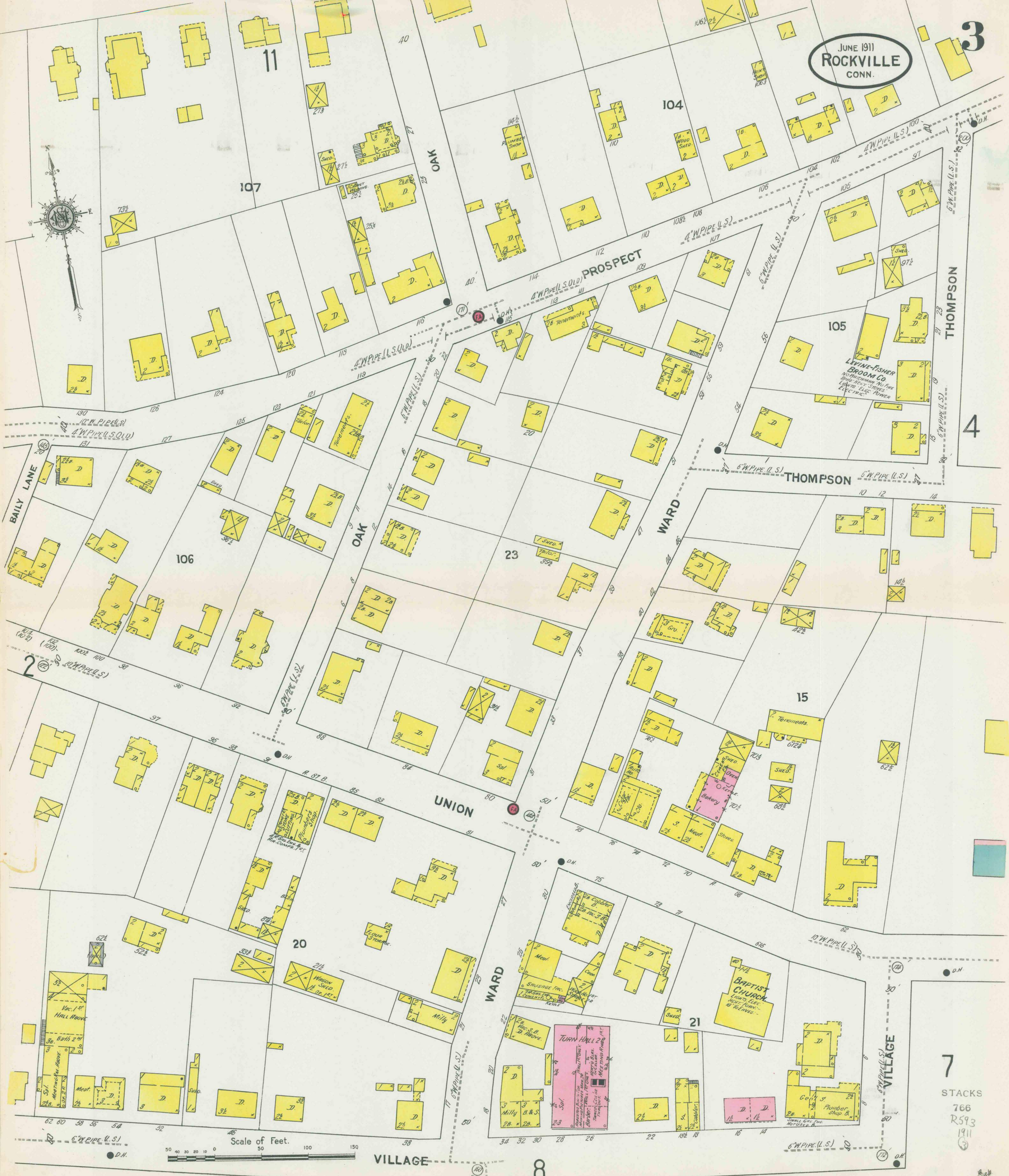
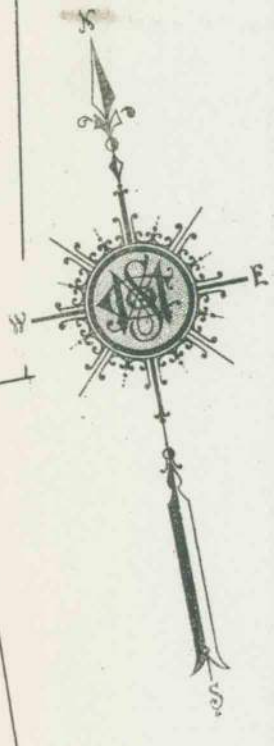
JUNE 1911  
**ROCKVILLE**  
CONN.

3

4

7  
STACKS  
766  
R593  
1911

8



JUNE 1911  
ROCKVILLE  
CONN.

4

12

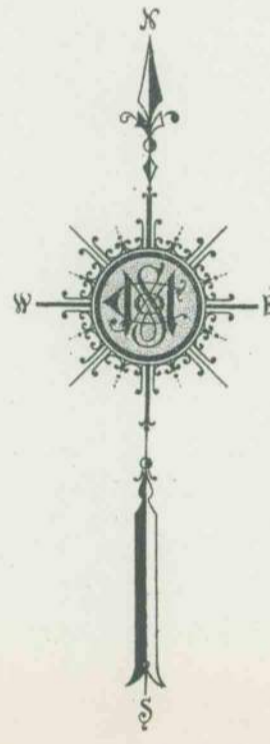
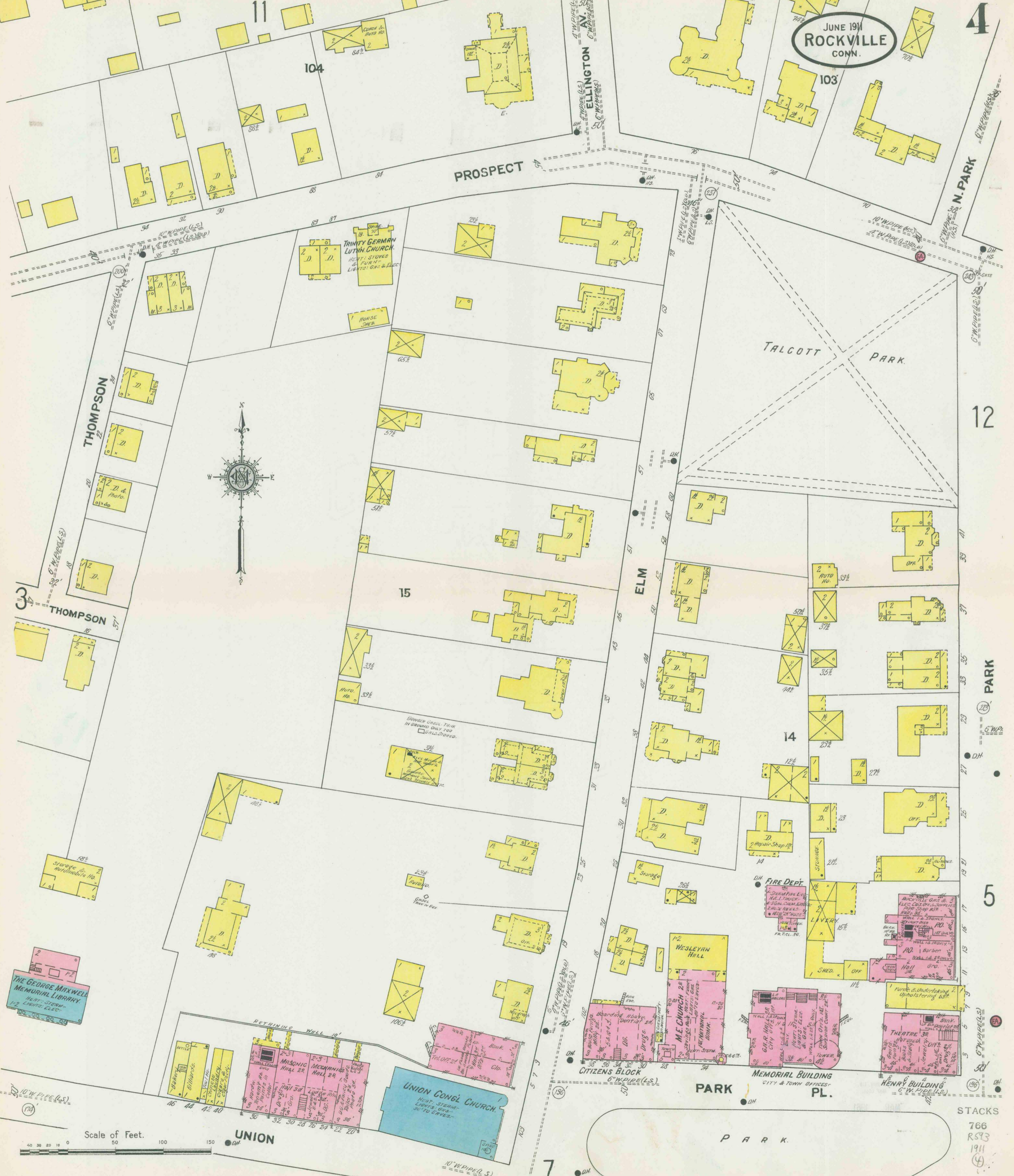
5

STACKS

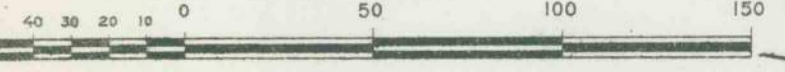
766  
R593

1911

(4)



Scale of Feet.



UNION

PARK

MEMORIAL BUILDING  
CITY & TOWN OFFICES

HENRY BUILDING  
C.W. PIPE (L.S.)

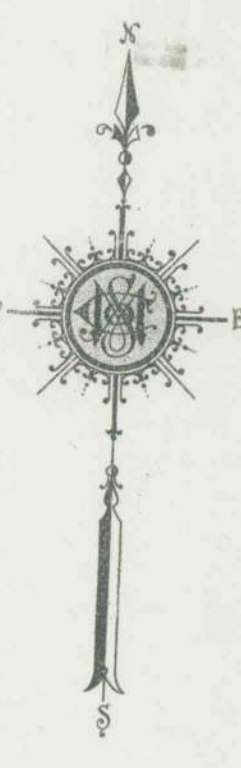
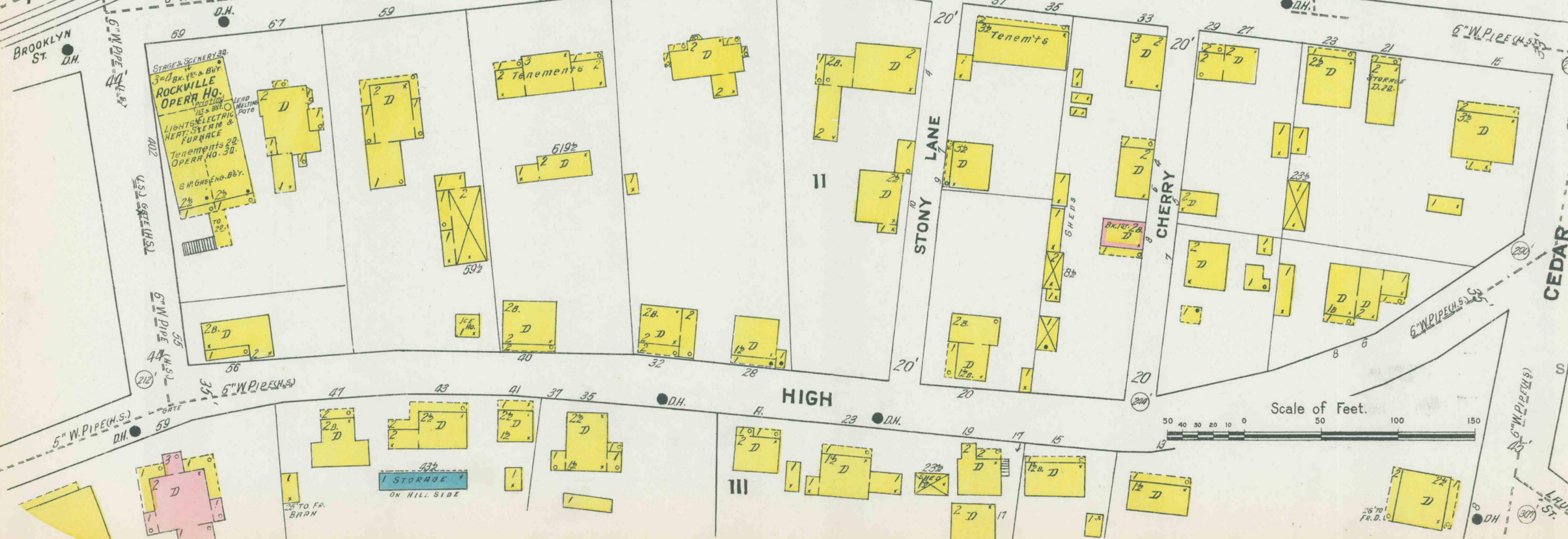
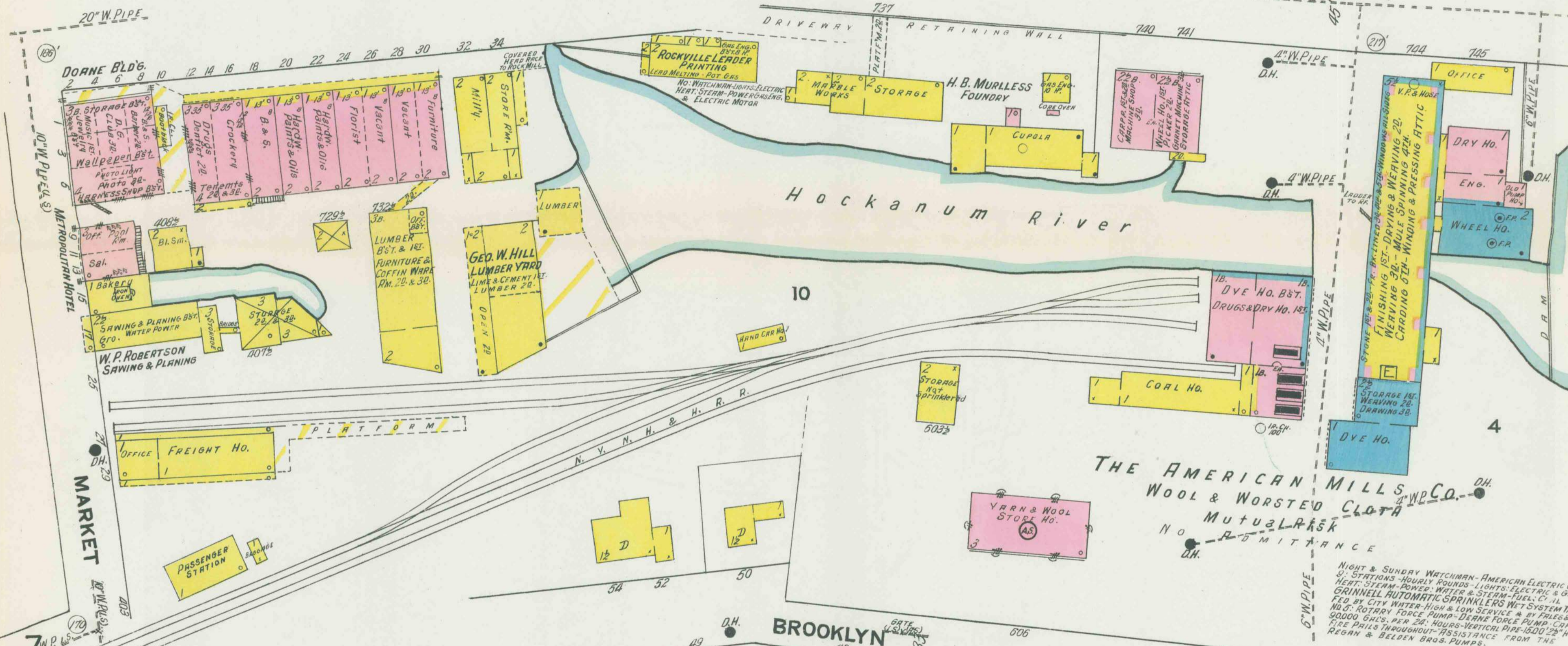
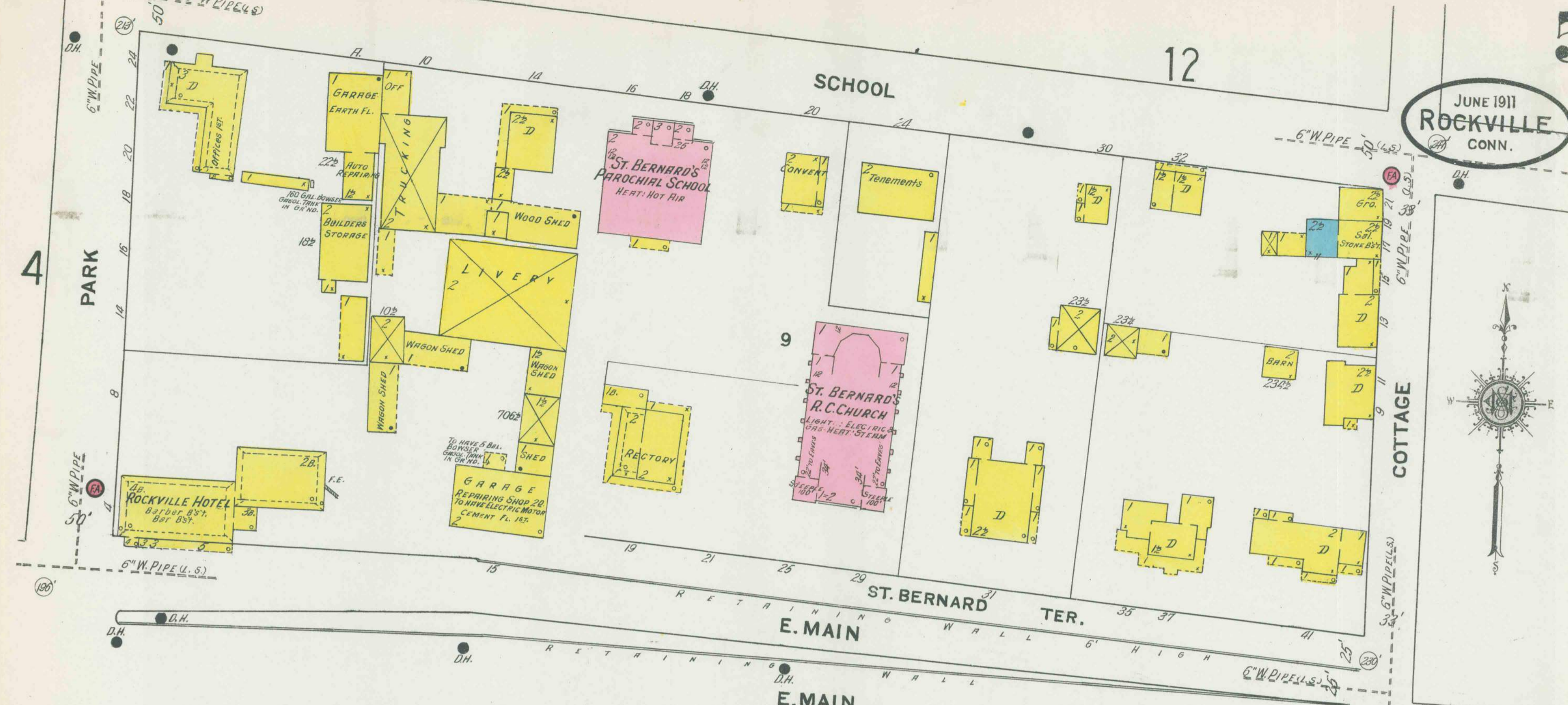
PARK

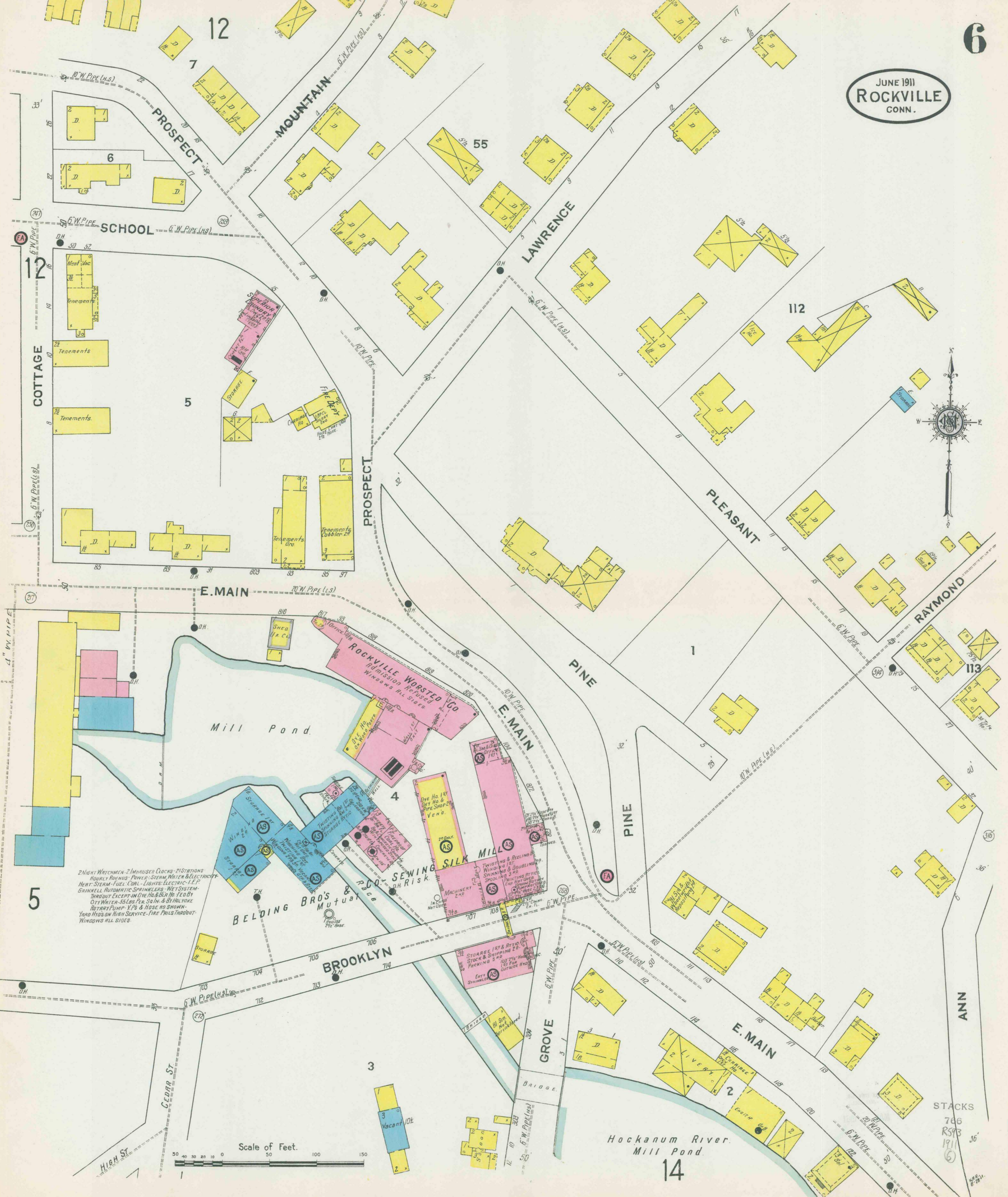
STACKS

766  
R593

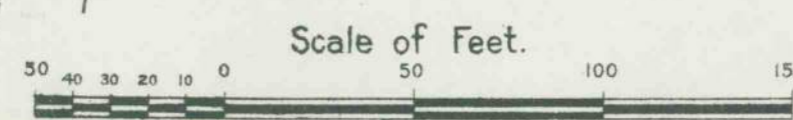
1911

(4)





2 NIGHT WATCHMEN 2 IN HAUSER LOCKS - PISTONS  
HOURLY ROUNDS - FOWL - STEAM WATER & ELECTRICITY  
HEAT - STEAM - FUEL COAL - LIGHTS - ELECTRICITY - L.F.P.  
GRINDWELL - AUTOMATIC SPRINKLERS - WET SYSTEM  
SHROUD EXCEPT IN DYE HO & BLEND HO. FED BY  
CITY WATER - 55 LBS PER. SA IN. & 61 HOLYOKE  
ROTARY PUMP - V.P.s & HOSE AS SHOWN -  
YARD HYDS ON HIGH SERVICE - FIRE TRAIL THROUGHOUT -  
WINDOWS ALL STILES.



STACKS  
766  
RS93  
1911  
6

JUNE 1911  
**ROCKVILLE**  
CONN.



**J. J. REGAN MFG. CO.**  
E-NIGHT & SUNDAY WATCHMEN. 2-MINUTE CLOCK  
IS STATIONS. POWER: WATER. HEAT: STEAM.  
FUEL: COAL. LIGHTS: ELEC. GRINNELL & HERRICKER AUTOMATIC  
SPRINKLERS AS SHOWN. FED BY CITY WATER TO LBS.  
PER. 30. INCH & BY ROBBY PUMPS AS SHOWN.  
H&P-RM HOSE. FIRE PAILS THROUGHOUT

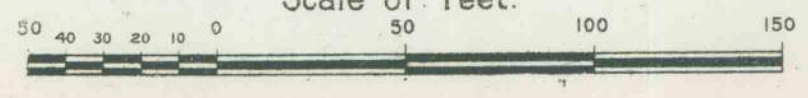
**J. J. REGAN MFG. CO. COTTON & WOOLEN MILL**  
FINISHING & DYEING

**THE ROCK MFG. CO. WOOLEN MILL**  
DYEING & FINISHING

**THE MUTUAL MFG. CO.**  
DYEING & FINISHING

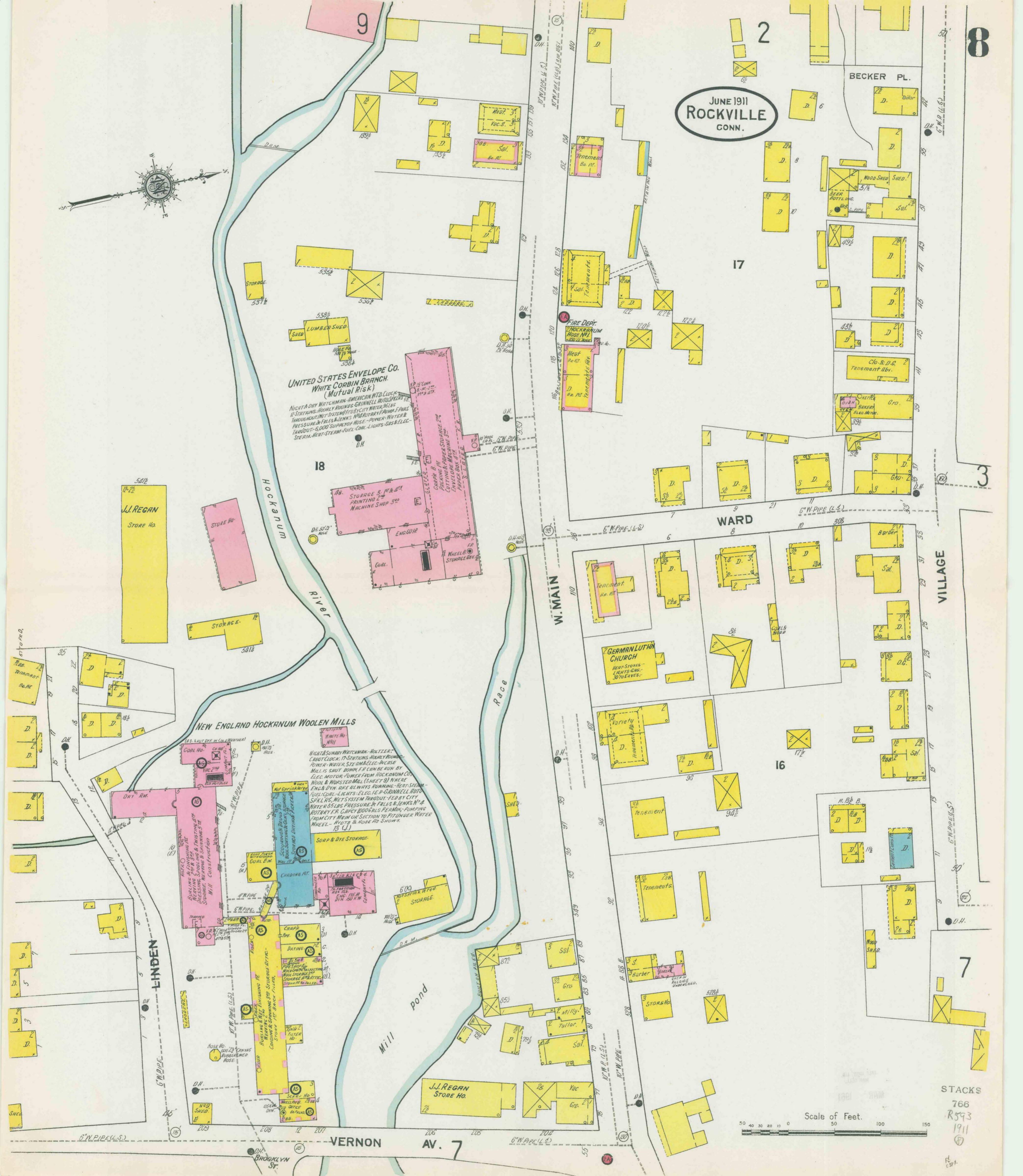
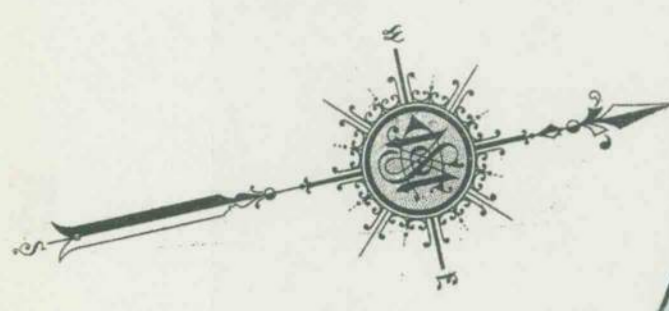
ONE SUNDAY & NIGHT WATCHMEN NEARBY CLOCK  
IS STATIONS. POWER: WATER. HEAT: STEAM.  
FUEL: COAL. LIGHTS: ELEC. GRINNELL & HERRICKER AUTOMATIC  
SPRINKLERS AS SHOWN. FED BY CITY WATER TO LBS.  
PER. 30. INCH & BY ROBBY PUMPS AS SHOWN.  
H&P-RM HOSE. FIRE PAILS THROUGHOUT

Scale of Feet.



STACKS  
766  
R593  
1911  
⑦

JUNE 1911  
ROCKVILLE  
CONN.



**UNITED STATES ENVELOPE CO.**  
WHITE CORBIN BRANCH.  
(Mutual Risk)

NIGHT & DAY WATCHMAN - AMERICAN INTD. CLOCK  
12 STATIONS - HOURLY ROOMS - GRINNELL ROTARY  
THROUGHOUT - MET. SYSTEM FED BY CITY WATER PIPES  
PRESSURE & PIPES - KLENKS - MOTOR - WATER  
TANK - OUT - GOOD SUPPLY OF HOSE - POWER WATER  
STEAM - HEAT - STEAM - FUEL - COAL - LIGHTS - GAS & ELEC.

STORAGE & PRINTING  
MACHINE SHOP  
ENG. CO. H.  
GOAL.  
WHEEL & STORAGE

**NEW ENGLAND HOCKANUM WOOLLEN MILLS**

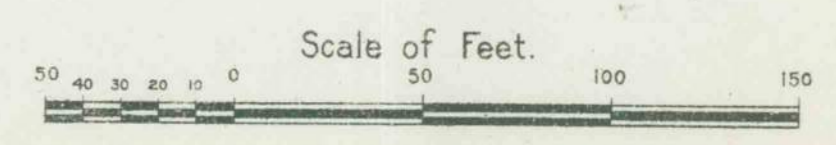
NIGHT & SUNNY WATCHMAN - ROTTER  
C. BOOT CLOCK - 17 STATIONS - HOURLY ROOMS  
POWER - WATER - STEAM - ELEC. - HOSE  
MILL IS SHUT DOWN FOR CAN BE RUN BY  
ELEC. MOTOR - POWER FROM HOCKANUM CO.  
WOOL & WORSTED MILL (SHEET 9) WHERE  
ENG. & DYN. ARE ALWAYS RUNNING - HEAT - STEAM  
FUEL - COAL - LIGHTS - ELEC. LE. IF GRINNELL ROT.  
SH. L. R. S. MET. SYSTEM THROUGHOUT - FED BY CITY  
WATER - 30 LBS. PRESSURE - R. PIPES - KLENKS - N. A.  
ROTARY FOR CARRY WOODS PERMITS - PUMPING  
FROM CITY MAIN OR SECTION TO PIT UNDER WATER  
WHEEL - HOSE & HOSE IS SHOWN  
13 (L)

DRYING & FINISHING  
MILL CONSTRUCTION  
MILL CONSTRUCTION  
MILL CONSTRUCTION

SOAP & DYE STORAGE  
CARDING

CRANK  
DRIVING  
MILL CONSTRUCTION

J.J. REGAN  
STORE HO.



STACKS  
766  
R593  
1911



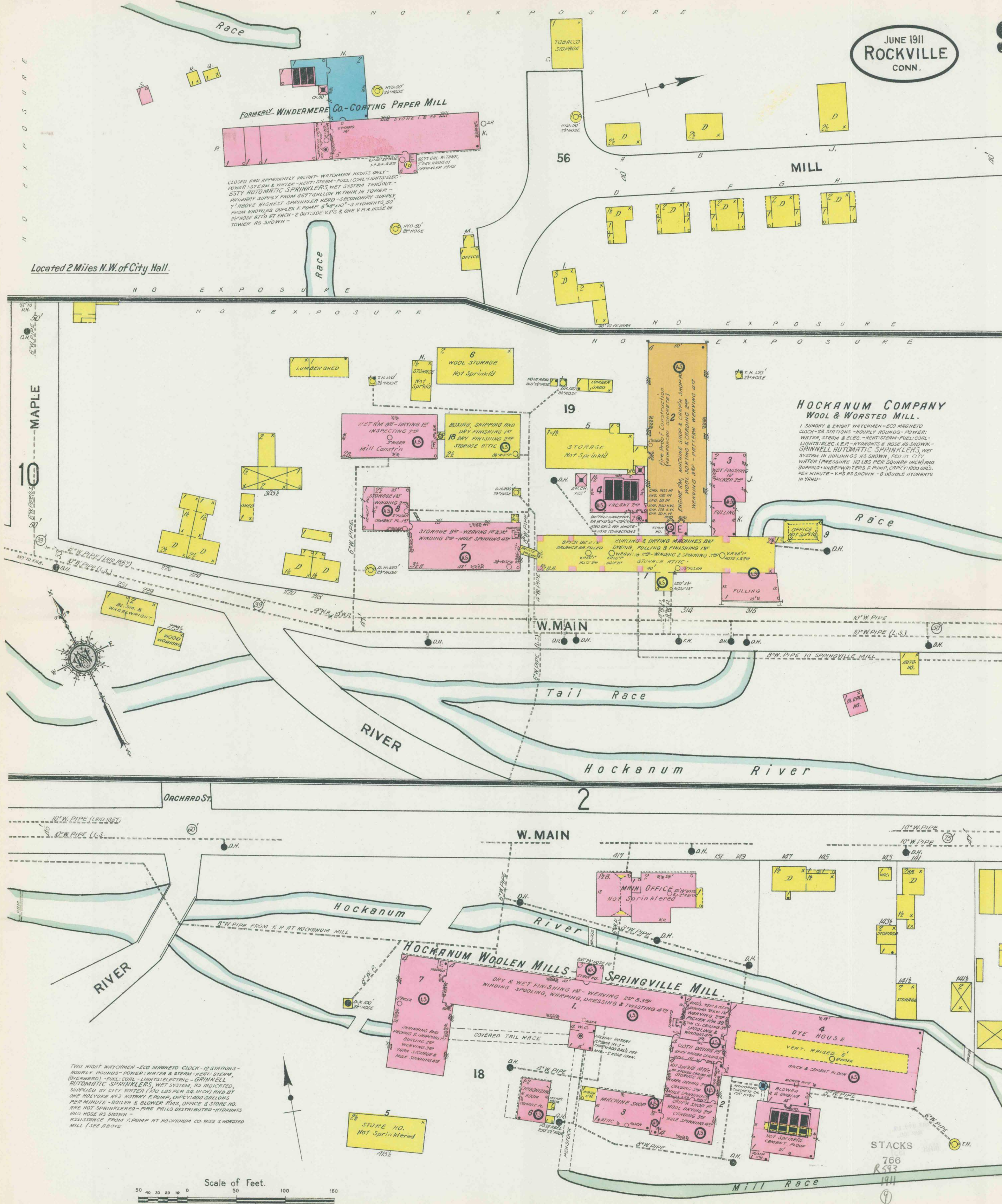
FORMERLY WINDERMERE CO.-COATING PAPER MILL

CLOSED AND APPARENTLY UNOCCUPIED - WATCHMEN NIGHTS ONLY -  
POWER - STEAM & WATER - HEAT - STEAM - FUEL - COAL - LIGHTS - ELEC -  
ESTY. AUTOMATIC SPRINKLERS - WET SYSTEM - TANK IN TOWER -  
PRIMARY SUPPLY FROM 6577 GALLON W. TANK IN TOWER -  
1" ABOVE HIGHEST SPRINKLER HEAD - SECONDARY SUPPLY  
FROM KNOWLES DUPLEX P. PUMP 5" x 4" x 10" - 3 HYDRANTS, 50'  
2 1/2" HOSE ATT'D AT EACH - 2 OUTSIDE V.P.'S & ONE V.P. & HOSE IN  
TOWER AS SHOWN -

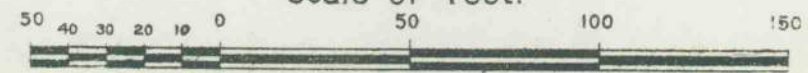
Located 2 Miles N.W. of City Hall.

HOCKANUM COMPANY  
WOOL & WORSTED MILL.

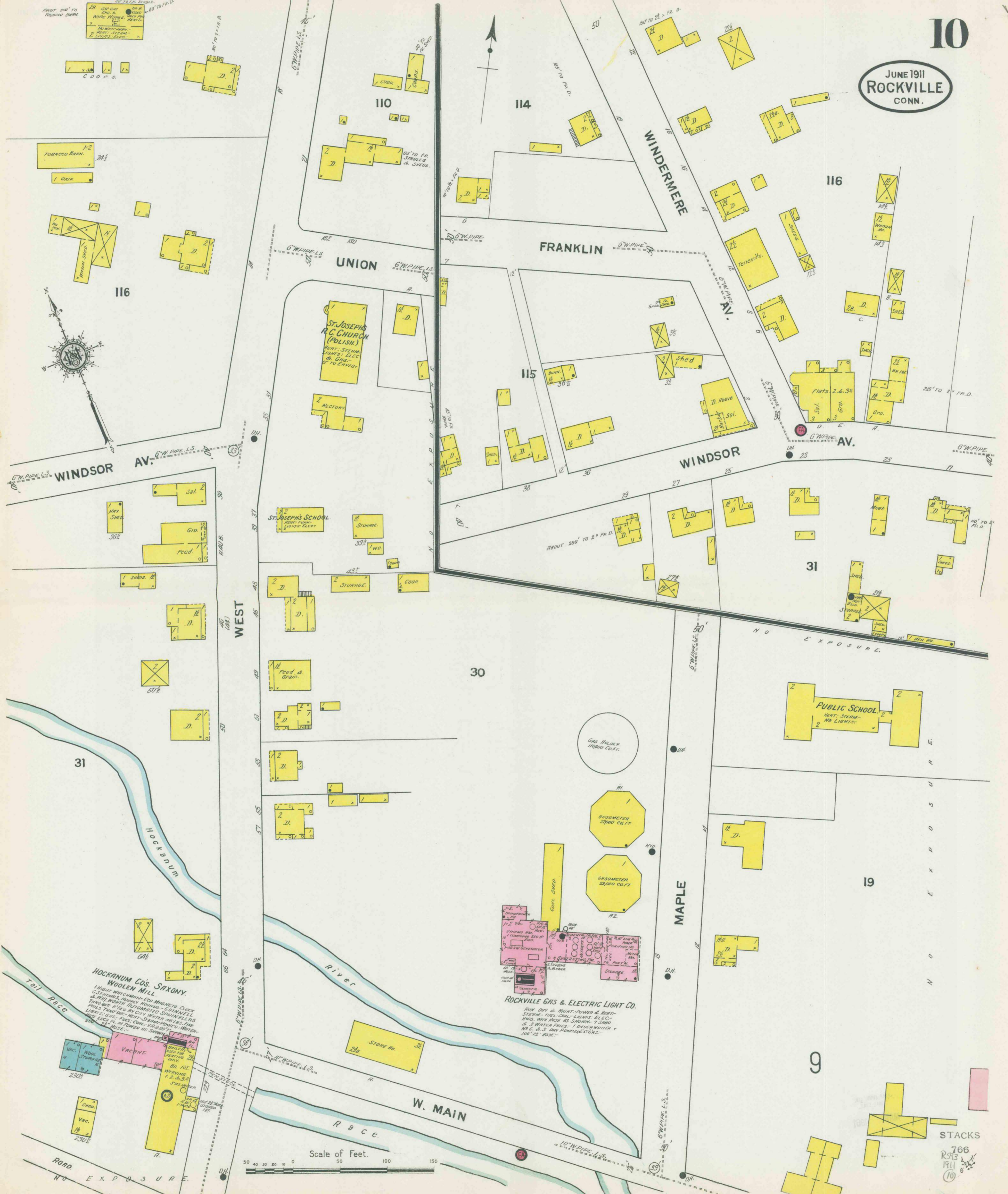
1 SUNDAY & NIGHT WATCHMEN - ECO MARETTO  
CLOCK - 28 STATIONS - HOURLY ROUNDS - POWER -  
WATER, STEAM & ELEC. - HEAT - STEAM - FUEL - COAL -  
LIGHTS - ELEC. I.E.P. - HYDRANTS & HOSE AS SHOWN -  
GRINNELL AUTOMATIC SPRINKLERS - WET  
SYSTEM IN BUILDINGS AS SHOWN, FED BY CITY  
WATER (PRESSURE 10 LBS PER SQUARE INCH) AND  
BUFFALO UNDERWRITERS P. PUMP, CAPACITY 1000 GALS.  
PER MINUTE - V.P.'S AS SHOWN - 6 DOUBLE HYDRANTS  
IN YARD -



Scale of Feet.



STACKS  
766  
R593  
1911

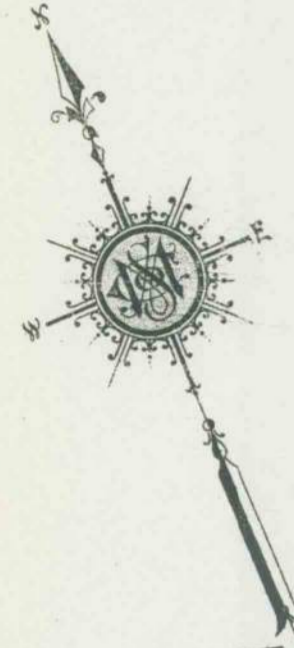


ABOUT 200' TO  
TERRACE BURN.

28' 2 1/2' DIA. A  
ON A  
WIRE WORKS  
HEAT  
HEAT STEAM  
2 LIGHTS ELEC.

COOP. S.

TERRACE BURN.  
1-2  
1 COOP.



116

110

114

116

115

WINDSOR AV.

UNION

FRANKLIN

WINDERMERE

WINDSOR

AV.

WEST

30

31

31

HOCKANUM RIVER

GAS HOLDER  
14500 CU. FT.

GAS METER  
22000 CU. FT.

GAS METER  
22000 CU. FT.

MAPLE

19

N O S U P R E  
E X P O S U R E  
N O S U P R E  
E X P O S U R E

9

HOCKANUM CO'S. SAXONY  
WOOLLEN MILL

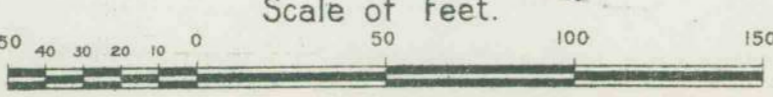
1 NIGHT WATCHMAN-ECO MAGNETO CLOCK  
2 STEAMERS, MULEY, ROUNDS - CHANNELL  
TWO WINDMILL FLUTING, TWO SPINNERS  
TWO WINDMILL FLUTING, TWO SPINNERS  
LIGHTS, COAL, FUEL, COAL, STEAM, POWER, WATER  
MILL, LICH, IN TOWER AS SHOWN -  
250' DIA. WHEEL

ROCKVILLE GAS & ELECTRIC LIGHT CO.  
RUN DAY & NIGHT-POWER & HEAT-  
STEAM- COAL, OIL, GAS, ELEC-  
TRIC, WITH ROSE AS SHOWN. 75000  
GAL. 3 WINTER PILES- 1 UNDER WATER -  
NO. 2, 4, 5 DRY POWDER, EXTENSIVE -  
100' DIA. ROSE

STONE BR.

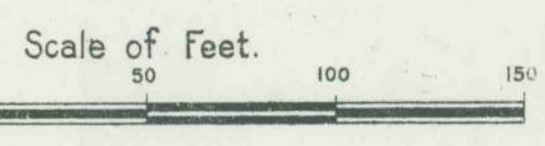
W. MAIN

Scale of Feet.

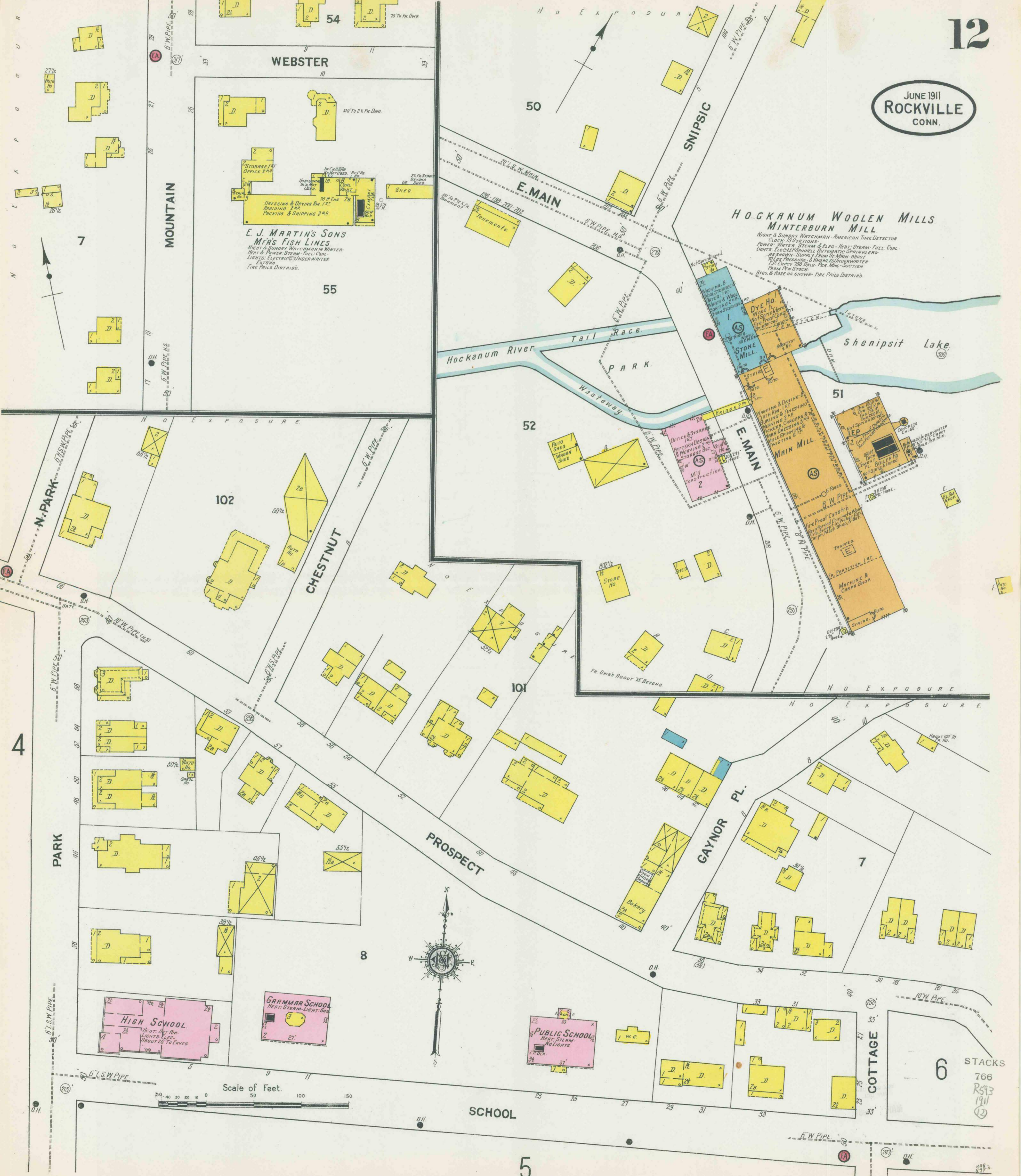


STACKS

766  
R.S. 1911  
10



JUNE 1911  
ROCKVILLE  
CONN.

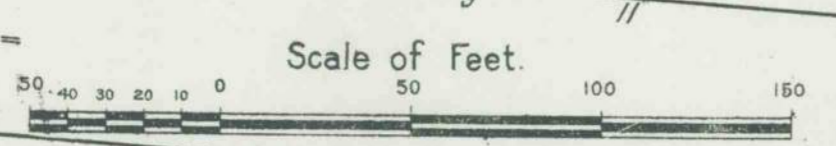


**E. J. MARTIN'S SONS  
MFRS FISH LINES**  
Night & Sunday Watchman in Winter  
Heat & Power, Steam, Fuel, Coal  
Lights: Electric, Underwater  
Extras  
Fire Pails Distribd.

**HOGKANUM WOOLEN MILLS  
MINTERBURN MILL**  
Night & Sunday Watchman - American Time Detector  
Clock, 13 Stations  
Power: Water, Steam & Elec - Heat, Steam, Fuel, Coal  
Lights: Electric, Automatic Sprinklers  
W.P. Pressure & Air, W.P. Underwater  
F.P. Capacity 200 Gals. Per Min. Suction  
From Pen Stock  
Hoses & Hose as shown - Fire Pails Distribd.

**HIGH SCHOOL**  
Heat, Steam, Light, Gas  
About 20' to Laves

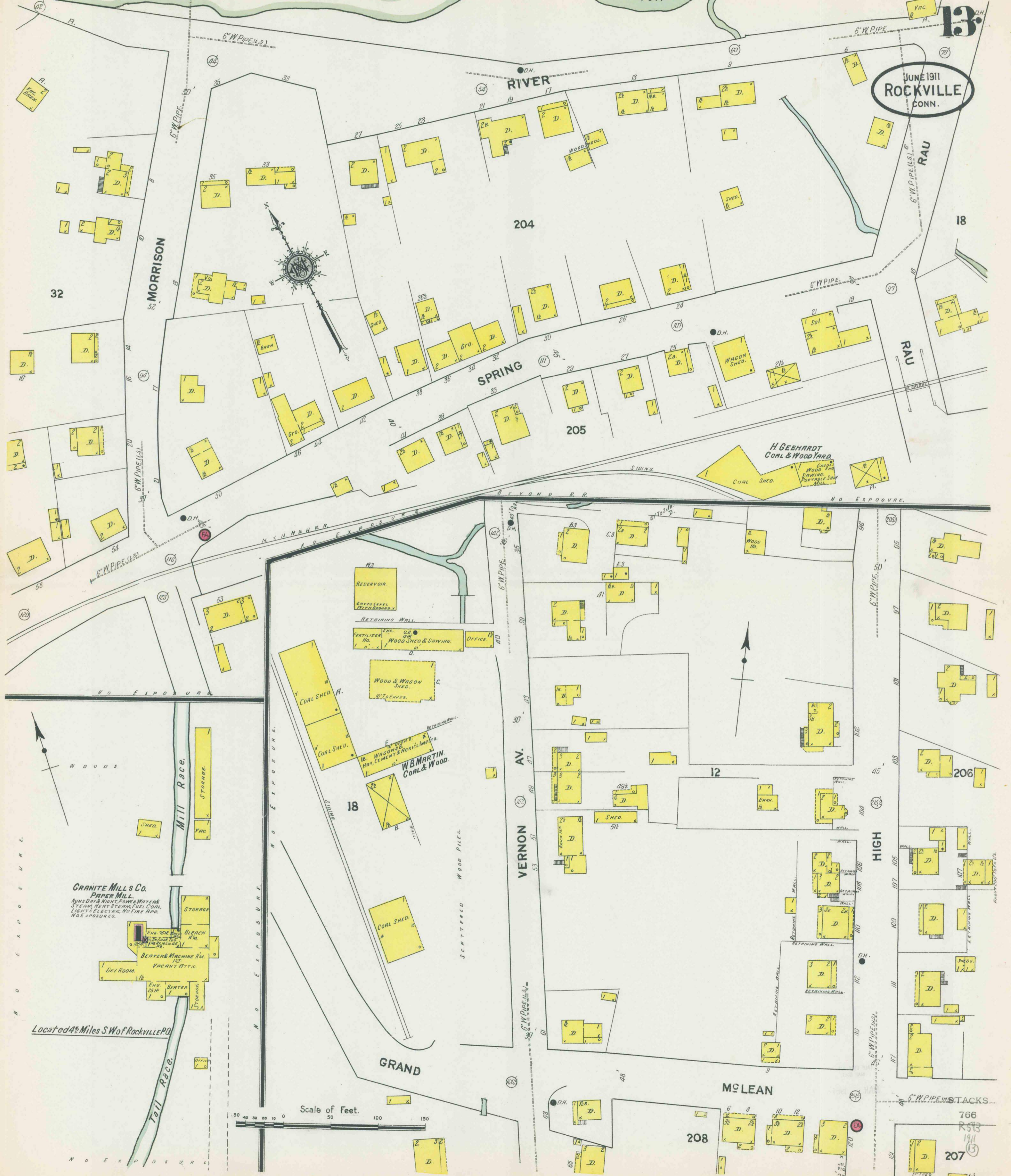
**PUBLIC SCHOOL**  
Heat, Steam, Light, Gas



STACKS  
766  
R513  
1911  
(12)

Hockanum River.

JUNE 1911  
ROCKVILLE  
CONN.



Scale of Feet.  
150 100 50 0

Located 4 1/2 Miles S.W. of Rockville P.O.

766  
R513  
1911  
207

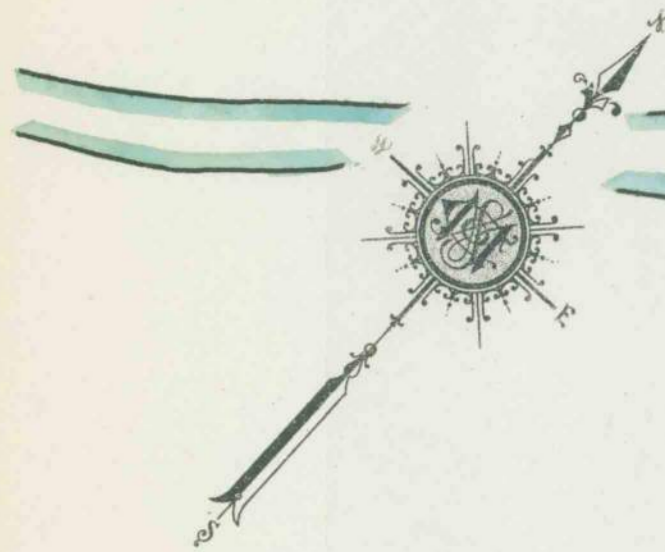
TALCOTTVILLE  
Located 5 Miles S.W. of Rockville P.O.

Tankeroosen Brook

TALCOTT BROS. WOOLEN MILL

JUNE 1911  
ROCKVILLE  
CONN.

14



STORE No. Not sprinklered.

SHOOTS & MACHING SHOPS - Not sprinklered.

SCHOOL No.

TO MANCHESTER 2 MILES

MAIN

TALCOTT BROS. OFFICE BLDG.

STORAGE OF PRINTS & SUPPLIES BLDG. LARGE CHEMICAL TANK ON GARAGE IN BLDG.

ONE NIGHT & SUNDAY WATCHMAN - AMERICAN WATCHMANS TIME DETECTOR CLOCK STATIONS IN MILL & 2 STATIONS IN STABLE REAR OF OFFICE - POWER WATER & STEAM - HEAT - LIGHTS - ELECTRIC (I.E.P.) AUTO. SPRINKLRS. THROUGHOUT SPINNELL HEADS. (FEW WALKWORTH & ESTY HEADS) SUPPLY FROM RESERVOIR ABOUT 500' DISTANT ON HILL. SPINNING ABOUT 25 LBS. PRESSURE ON HYDRANTS & SLICES ON HIGHEST SPARKLRS. RESERVOIR IS 17" DIAMETER. DEPTH OF WATER 12' CAPCY 23,374 GALS. RODNEY HUNT MFG CO. TYPE 11. ROTARY F.P. CAPCY 500 GALS PER MINUTE. RUN BY WATER POWER OR STEAM ENGINE OR BOTH TOGETHER. SUCTION TO MILL RACE. HYDRANTS & HOSE AS SHOWN. FIRE PAILS. WATER BARRELS & EXTING. DISTRIBUTED. CHEMICAL ENGINE IN OFFICE BASEMENT.

VERNON  
Located about 4 1/2 Miles S.W. of Rockville P.O.

VERNON  
Located about 4 Miles S.W. of Rockville P.O.

PAUL ACKERLY  
COTTON MILL  
LOWER OR RAVINE MILL

NIGHT WATCHMAN IN WINTER ONLY  
OWNER LIVES IN SIGHT OF MILL -  
HEAT - STEAM - LIGHT - ELECTRIC (I.E.P.)  
POWER - WATER & STEAM - FUEL - COAL -  
V.P. HYDS. & HOSE AS SHOWN. PERFORATED  
SPARKER PIPE IN ATTIC MAIN MILL.  
PAILS & JENNS HRS. ROTARY F.P. SUCTION  
TO FLUME. FIRE PAILS & WATER BLDG. THROUGHOUT.  
GUNDERWATERS LABORATORIES EXTING.  
NO PICKER-

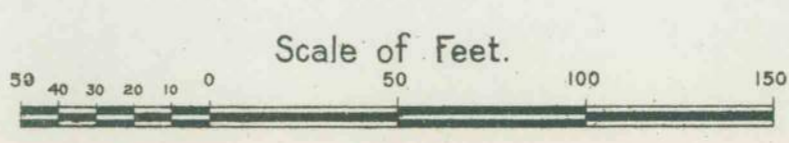
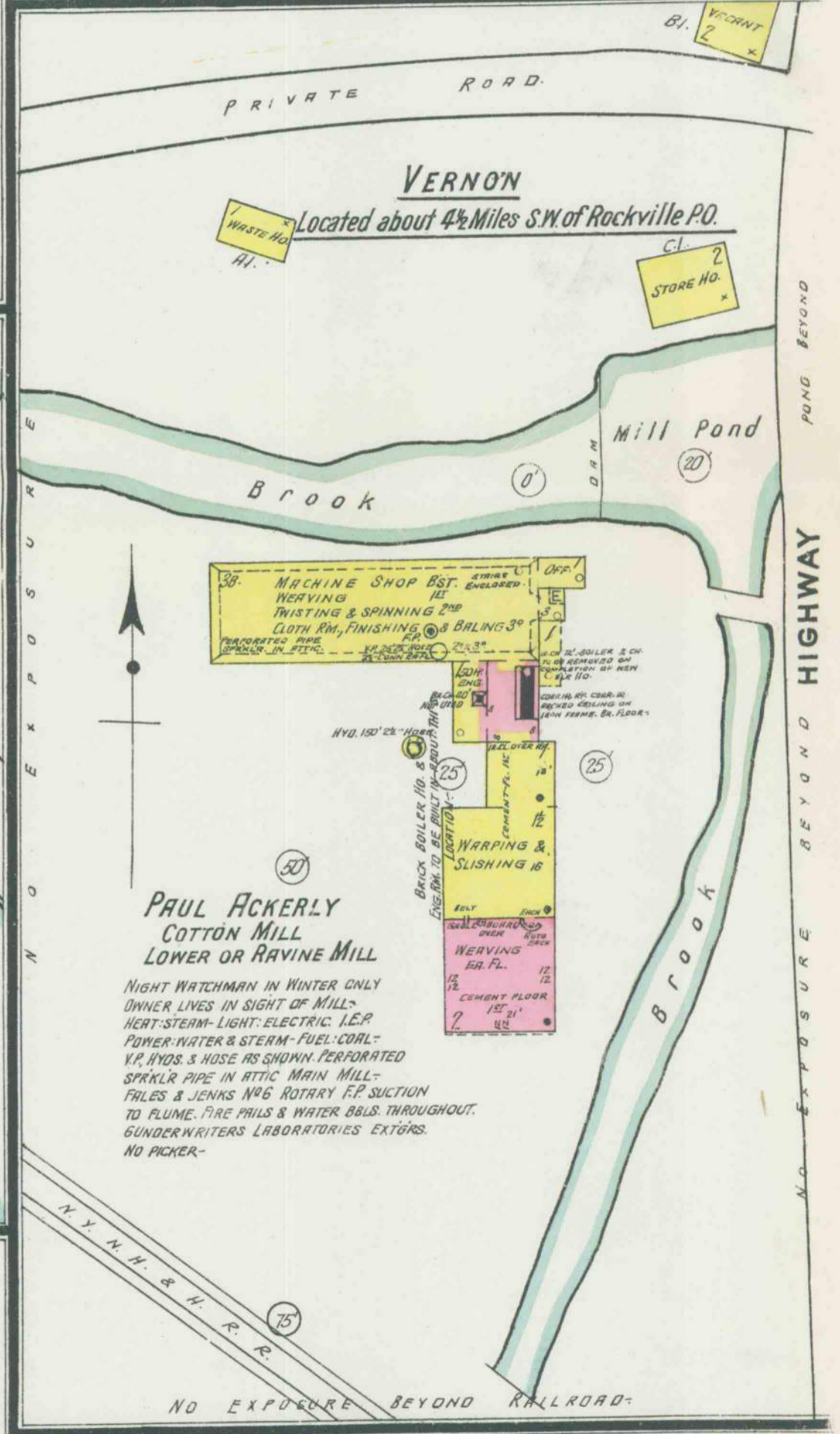
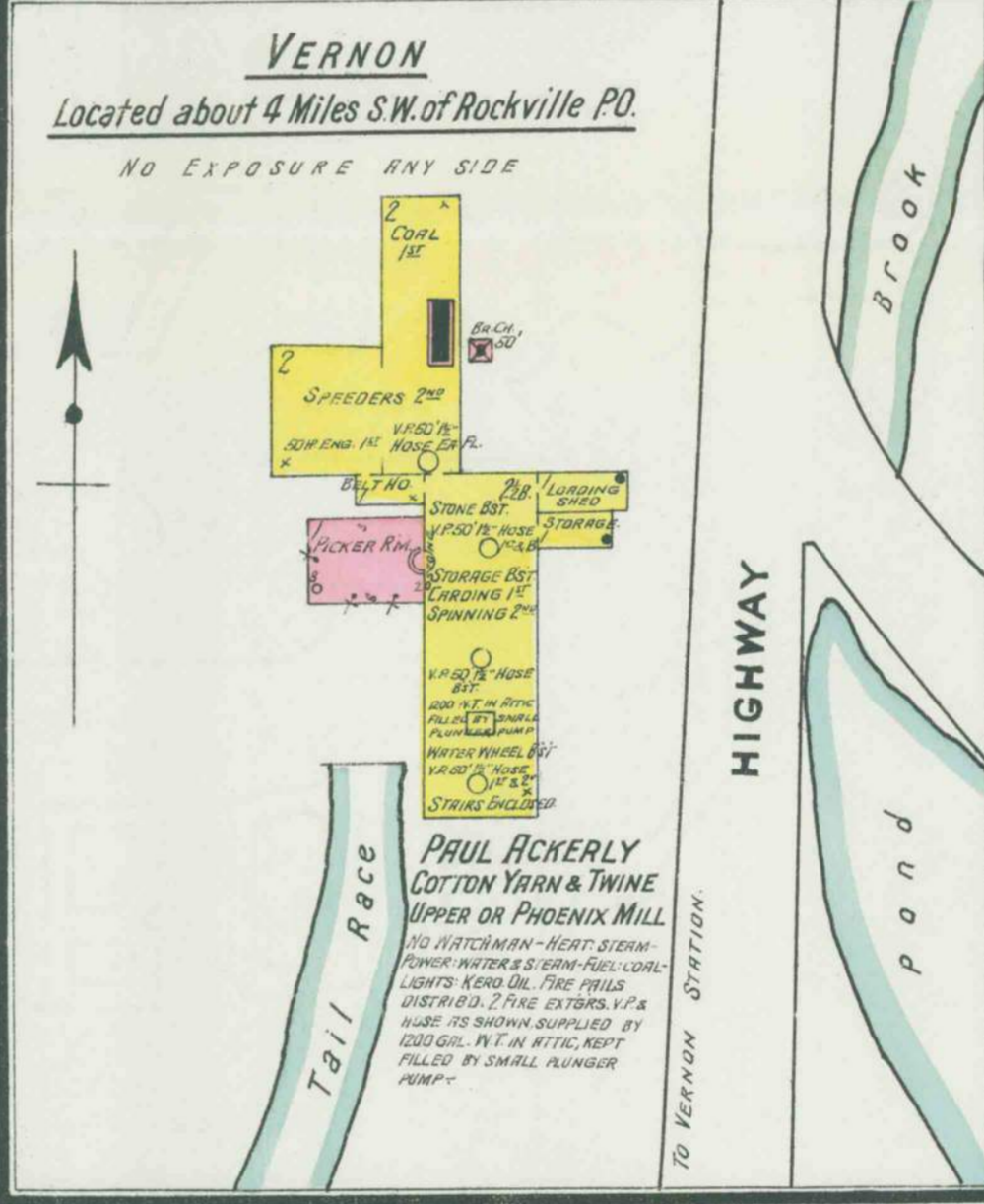
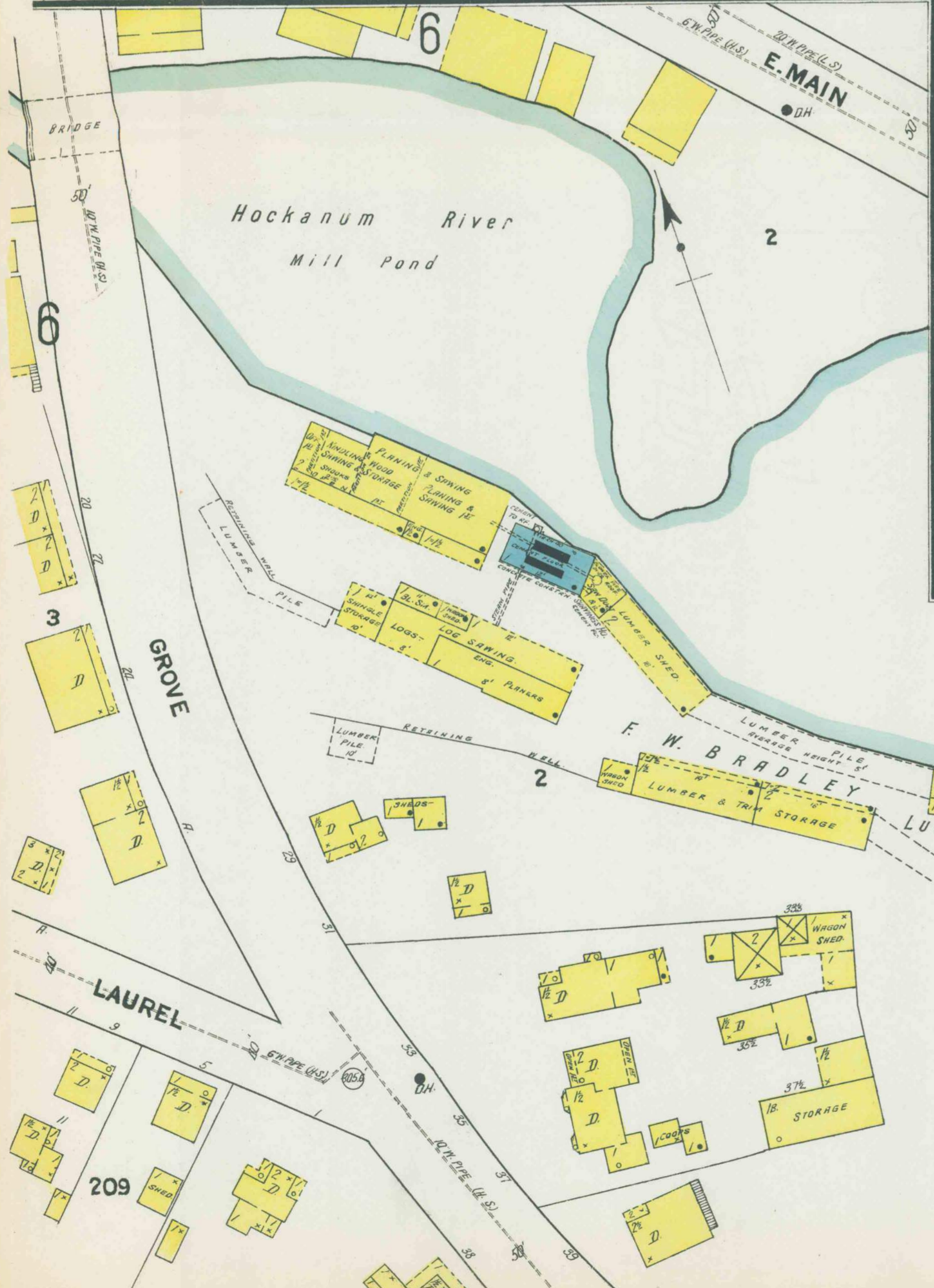
NO EXPOSURE ANY SIDE

NO EXPOSURE BEYOND RAILROAD

Hockanum River  
Mill Pond

Mill Pond

Mill Pond



STACKS  
766  
R593  
1911  
14